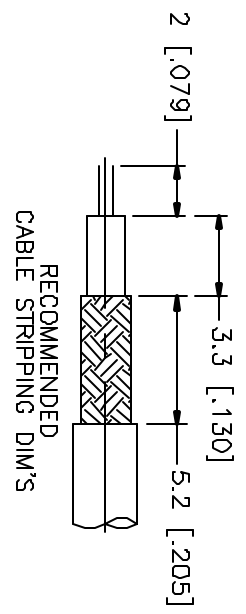
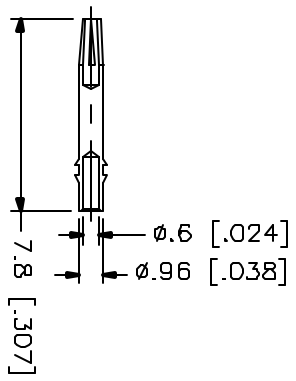
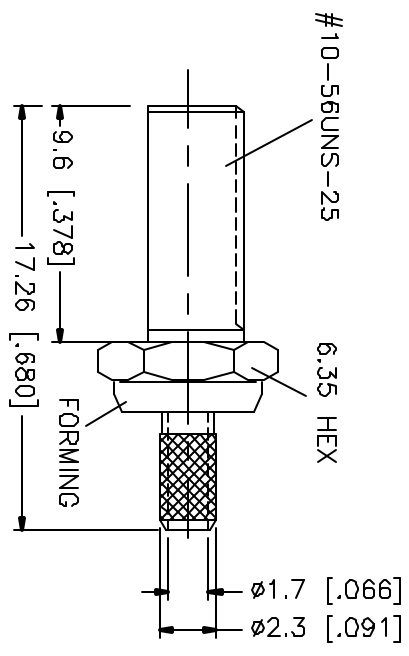
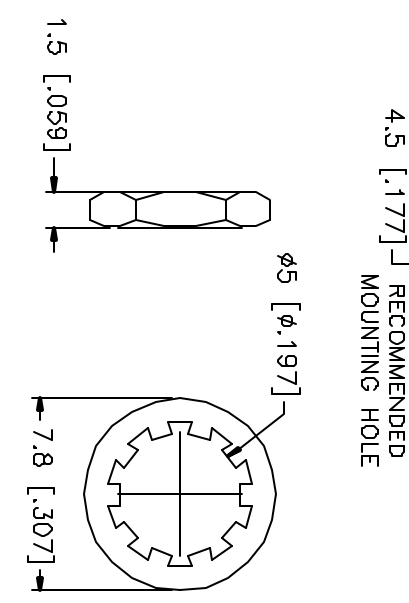
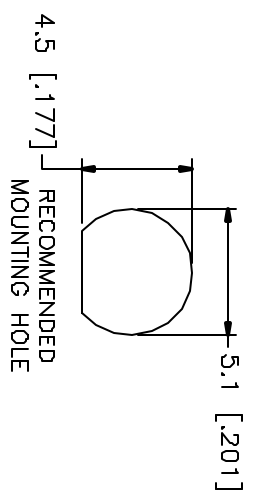
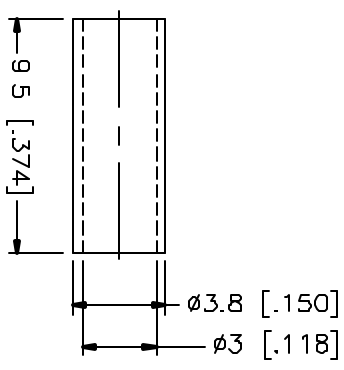


REV.	DATE	DESCRIPTION
A	01/21/01	UPDATE BODY/CONTACT PIN/FERRULE DIMENSIONS



CRIMP NOTES:
 1 CRIMPED FERRULE
 HEX CRIMP SIZE .128"
 2 CONTACT PIN TO SOLDER
 3. MAX. PANEL THICKNESS = 6.8mm



DESCRIPTION	MATERIAL	FINISH	UNLESS OTHERWISE SPECIFIED DIMENSIONS ARE IN MILLIMETERS	APPROVALS	DATE	TITLE	SCALE	PART NO.	SHEET	REV
1 BODY	BRASS	NICKEL	DIMENSIONS IN [] ARE IN INCHES FOR CUSTOMER REFERENCE ONLY UNLESS OTHERWISE SPECIFIED TOLERANCES FOR MILLIMETERS ARE: 0.5-6 = ± 0.2 6-30 = ± 0.4 30-120 = ± 0.6 120-315 = ± 1 315-1000 = ± 1.6 1000-2000 = ± 2.4	DRAWN	01/21/01	MCX BULKHEAD CRIMP JACK (FOR RG-174/U, 188A/U, 316/U)	A	99001	252144	A
2 INSULATOR	TEFLON	NATURAL		CHECKED						
3 BARREL	BRASS	NICKEL		ISSUED						
4 CONTACT PIN	BER. COPPER	GOLD								
5 LOCK WASHER	BRASS	NICKEL								
6 HEX NUT	BRASS	NICKEL								
7 FERRULE	COPPER	NICKEL								
8				DO NOT SCALE DRAWING						

