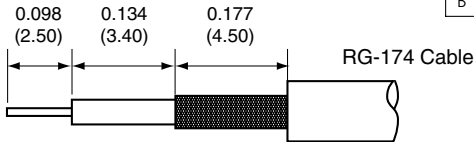


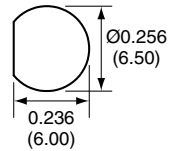
| Description | Material | Finish |
|-------------|------------|--------|
| Body | Brass | Nickel |
| Socket | BE CU | Gold |
| Insulation | Teflon | Teflon |
| Crimp Ring | Brass | Nickel |
| O Ring | SI Rubber | Rubber |
| Washer | Brass | Nickel |
| Nut | Brass | Nickel |
| Heat Shrink | Polyolefin | Black |

RECOMMENDED CABLE STRIPPING DIMENSIONS

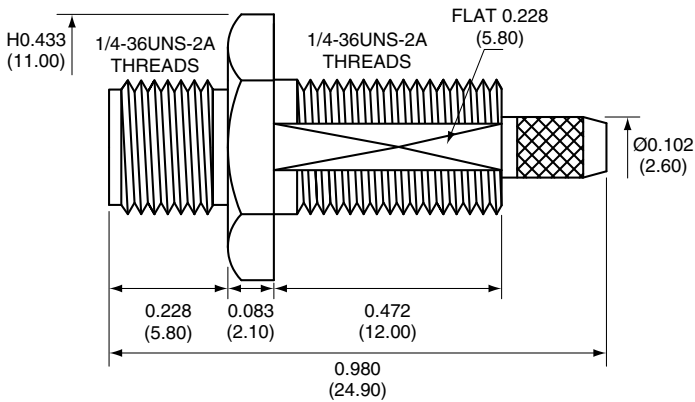


| REVISIONS | | | |
|-----------|---|--------|------|
| REV | DESCRIPTION | DATE | APPV |
| B | Add assembly instructions and heat shrink | 1/8/10 | CJ |

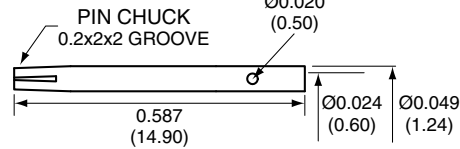
RECOMMENDED MOUNTING HOLE



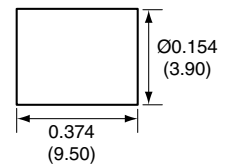
SIDE VIEW



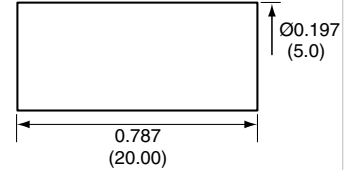
SOCKET



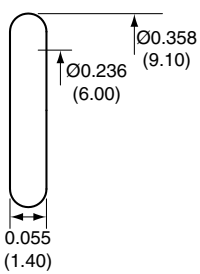
CRIMP RING



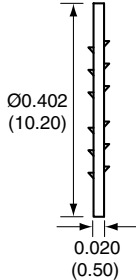
HEAT SHRINK TUBING



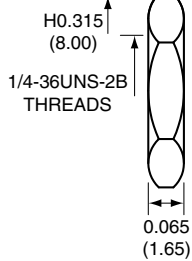
O-RING



WASHER



NUT



NOTES: (UNLESS OTHERWISE SPECIFIED)

1. ALL DIMENSIONS ARE IN INCHES [mm].
2. DIMENSIONS APPLY AFTER FINISHING.
3. MANUFACTURE TO BE COMPLIANT WITH EU RoHS DIRECTIVE.
4. SAFETY BREAK ALL SHARP CORNERS AND EDGES .02 MAXIMUM.

WARNING: THIS DRAWING CONTAINS PROPRIETARY INFORMATION THAT IS THE SOLE PROPERTY OF CONNECTOR CITY, AND SHALL BE TREATED AS SUCH. NO DISCLOSURE OR REPRODUCTION OF THIS DOCUMENT IS PERMITTED, IN WHOLE OR IN PART, WITHOUT THE EXPRESS WRITTEN PERMISSION OF CONNECTOR CITY OR ITS DESIGNATED AGENTS.

CONNECTOR CITY THE VALUE OF CONNECTIONS 159 ORT LANE MERLIN, OR 97532

TITLE: SMA FEMALE BULKHEAD MOUNT CABLE END CRIMP WITH O-RING FOR RG174 CABLE

- CONSMA015 ASSEMBLY INSTRUCTIONS**
1. Solder the pin to the center conductor or crimp with 0.028" hex crimp tool.
 2. Insert the pin, center conductor, and insulation into the body.
 3. Wrap the braid around the tail of the body and crimp the ring with a 0.128" hex crimp tool (or one labeled for use with RG-174 cable).
 4. Slide heat shrink tubing over crimp ring and then heat.

| | | |
|------------------|---|------------------------|
| MATERIAL: | TOLERANCES: .020 [0.50]-.200 [5.00]= ±.008 [0.20] .200 [5.00]-1.200 [30.00]= ±.016 [0.40] 1.20 [30.0]-4.75 [120.0]= ±.024 [0.60] 4.75 [120.0]-12.40 [315.0]= ±.040 [1.0] | PROJECTION: |
| FINISH: | DRAWN: CJ | DT: 1/8/10 |
| | ENGR: | DT: |

| | | |
|-------------------|-----------------------------|---------------------|
| SIZE A | DWG. NO. CONSMA015 | REV B |
| SCALE: 2:1 | DO NOT SCALE DRAWING | SHEET 1 OF 1 |

LDCFDCC_A