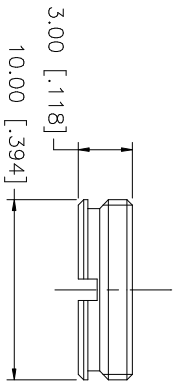
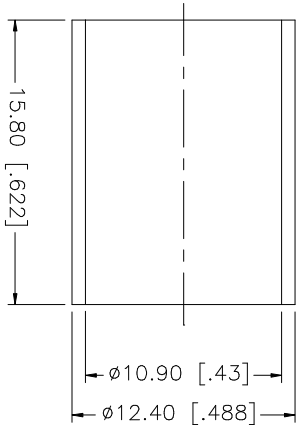
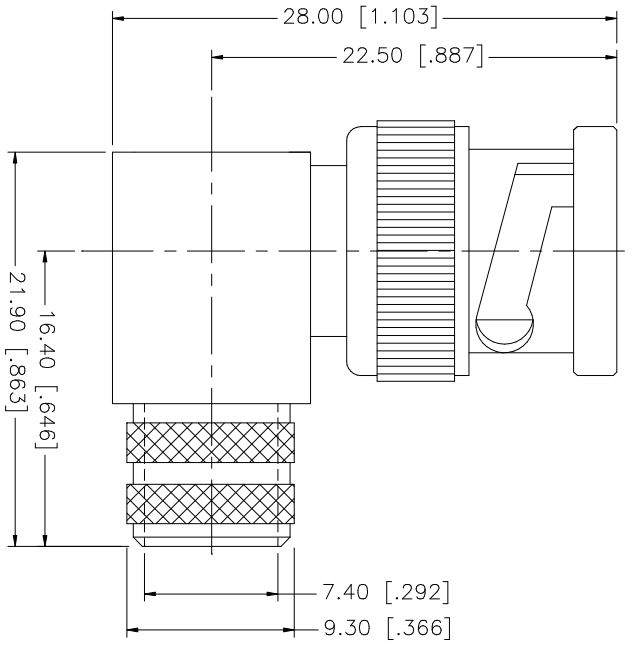


REV.	DATE	DESCRIPTION
NC	06/15/98	INITIAL RELEASE
A	07/20/05	UPDATE DRAWING FORMAT



RECOMMENDED
CABLE STRIPPING DIM'S

NO.	DESCRIPTION	MATERIAL	FINISH	QTY	UNLESS OTHERWISE SPECIFIED DIMENSIONS ARE IN INCHES AND FOR CUSTOMER REFERENCE ONLY. TOLERANCES FOR MILLIMETERS ARE: UNLESS OTHERWISE SPECIFIED: 0.5 - 8mm ± 0.20mm 8 - 30mm ± 0.40mm 30 - 120mm ± 0.50mm UNLESS OTHERWISE SPECIFIED DIMENSIONS ARE: UNLESS OTHERWISE SPECIFIED: .020 - .315 = ± 0.007" .315 - 1.180 = ± 0.015" 1.180 - 4.724 = ± 0.020"	DO NOT SCALE DRAWING	APPROVALS	DATE	PART DESCRIPTION	
8									<p>Amphenol Connex</p> <p>BNC R/A CRIMP PLUG (FOR BELDEN 9913, 9914, LMR400 CABLE)</p> <p>PART NO. 112596</p>	
7										
6	COVER	BRASS	NICKEL	1						
5	FERRULE	BRASS	NICKEL	1						
4	CONTACT PIN	BRASS	GOLD	1						
3	INSULATOR	TEFLON	NATURAL	1						
2	BODY	BRASS	NICKEL	1						
1	DESCRIPTION									
					CAD FILE		C:/112/112596.DWG		DWG. NO. 112596.DWG	
					REV. A		SIZE A		SCALE NA	