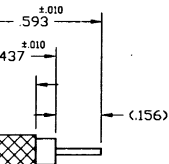
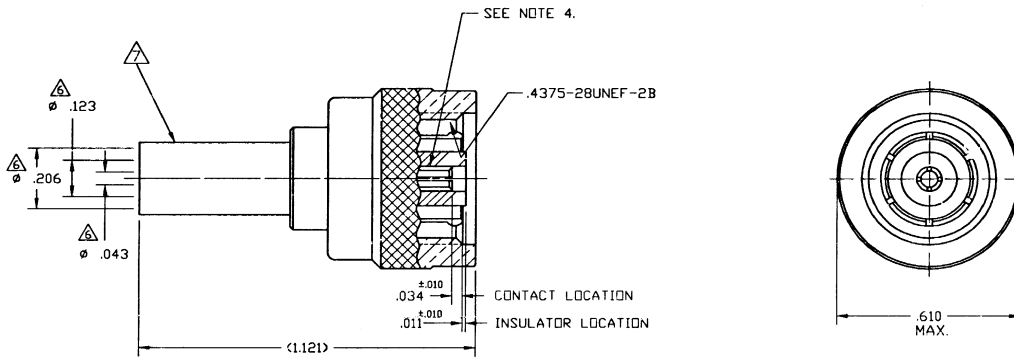


ST CONFORM TO AMPHENOL SPEC. 349-50560.
Y DIMENSIONS.

AMPHENOL TOOL 227-944 (M22520/5-01) & DIE SET
CAVITY 'A' (M22520/5-11, CLOSURE 'A').
NOTE: WHEN SOLDERING CONTACT TO CABLE, ROSIN CORE (60% TIN, 40% LEAD) SOFT SOLDER PER
RECOMMENDED. WHEN CRIMPING CONTACT TO CABLE, CRIMP AMPHENOL TOOL 227-944
) & DIE SET 227-1221-11, CAVITY 'B' (M22520/5-11, CLOSURE 'B').
ENCLOSED IN PARENTHESIS ARE REFERENCE.
E THIS DRAWING.
BURRS, BREAK SHARP EDGES AND CORNERS
UNLESS OTHERWISE SPECIFIED.
UNLESS OTHERWISE SPECIFIED, ALL DIMENSIONS ARE AFTER PLATING.

31-5677		REVISIONS			
DRAWING NO.	REV	DESCRIPTION	DATE	ECO	APPR
THIRD ANGLE PROJ.		OFFICIAL ENG. RELEASE TO MFG.			
	C	ADDED SHEET 2	4/30/96	40747	CPM/1



ENDED CABLE
ING DIMS.

CUSTOMER OUTLINE DWG.

UNLESS OTHERWISE SPECIFIED, DIMENSIONS ARE IN INCHES AND TOLERANCES ARE: 3 PLACE DECIMAL ANGLES $\pm .005$ (0.127 mm) $\pm 1^\circ$	MATERIAL	DRAWN C. McGRATH	DATE 6/7/95	TITLE TNC PLUG REVERSE INTERFACE FOR RG58/U	Amphenol Amphenol Corporation RF/Microwave Operations Danbury, Conn. U.S.A. G6810	
	REFERENCE EAR 964132-1	ENGINEER <i>[Signature]</i>	DATE 4/30/96	APPROVED <i>[Signature]</i>	DATE 4/30/96	SCALE: 3:1 SHEET 2 OF 2
		CAD FILE H:\DEPT611\TNC\031\ASSY\5677SHT2	CODE ID 74868	DWG SIZE B	DRAWING NO. 31-5677	ISSUE C