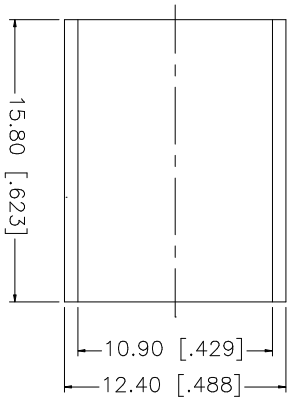
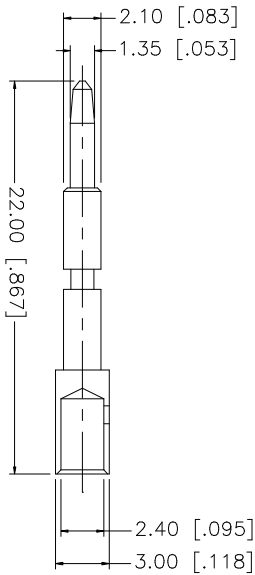
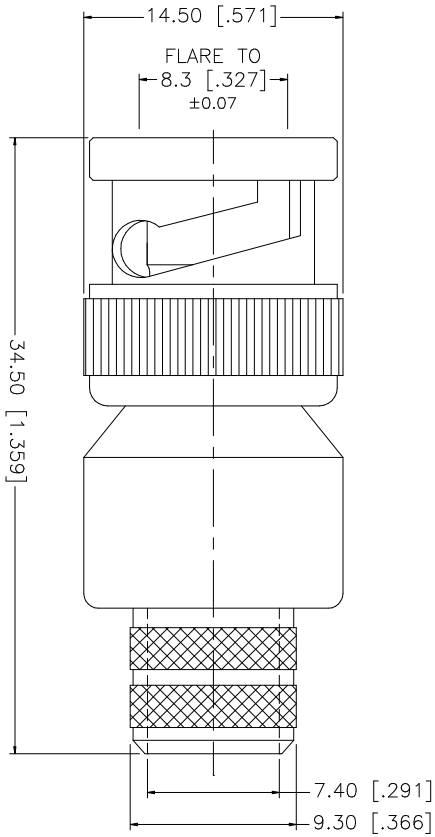
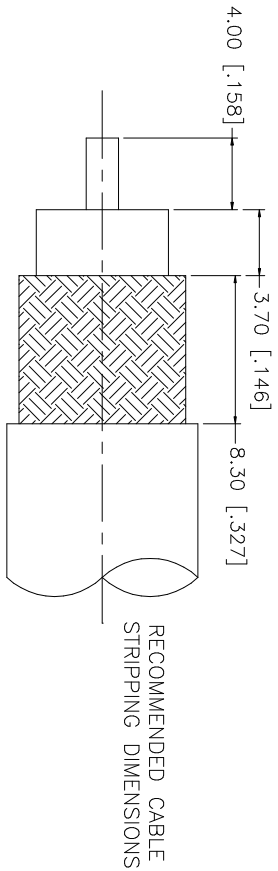


| REV. | DATE | DESCRIPTION |
|------|----------|-----------------------|
| NC | 05/05/97 | INITIAL RELEASE |
| A | 02/24/03 | UPDATE DRAWING FORMAT |



- CRIMP NOTES:
1. CRIMPED FERRULE
HEX CRIMP SIZE .429"
 2. CRIMPED CONTACT PIN
HEX CRIMP SIZE .100"

| DESCRIPTION | MATERIAL | FINISH | QTY | DO NOT SCALE DRAWING | APPROVALS | DATE | PART DESCRIPTION | |
|-------------|-------------|--------|---------|------------------------------------------------------------------------------------------------------------------------------------------------------------------------------------------------------------------------------------------------------------|-----------|------------|------------------|-------------------------------------------------------------------|
| 8 | | | | UNLESS OTHERWISE SPECIFIED DIMENSIONS ARE IN MILLIMETERS. DIMENSIONS IN [] ARE IN INCHES AND FOR CUSTOMER REFERENCE ONLY. TOLERANCES FOR MILLIMETERS ARE: UNLESS OTHERWISE SPECIFIED 0.5 - 8mm ± 0.20mm 8 - 30mm ± 0.40mm 30 - 120mm ± 0.50mm | DRAWN | G.R.S. | 07/20/05 | Amphenol Connex BNC CRIMP PLUG (FOR RG-8, 213 CABLE) |
| 7 | | | | UNLESS OTHERWISE SPECIFIED DIMENSIONS ARE IN MILLIMETERS. DIMENSIONS IN [] ARE IN INCHES AND FOR CUSTOMER REFERENCE ONLY. TOLERANCES FOR MILLIMETERS ARE: UNLESS OTHERWISE SPECIFIED 0.5 - 8mm ± 0.20mm 8 - 30mm ± 0.40mm 30 - 120mm ± 0.50mm | CHECKED | | | |
| 6 | | | | UNLESS OTHERWISE SPECIFIED DIMENSIONS ARE IN MILLIMETERS. DIMENSIONS IN [] ARE IN INCHES AND FOR CUSTOMER REFERENCE ONLY. TOLERANCES FOR MILLIMETERS ARE: UNLESS OTHERWISE SPECIFIED 0.5 - 8mm ± 0.20mm 8 - 30mm ± 0.40mm 30 - 120mm ± 0.50mm | ISSUED | | | |
| 5 | | | | UNLESS OTHERWISE SPECIFIED DIMENSIONS ARE IN MILLIMETERS. DIMENSIONS IN [] ARE IN INCHES AND FOR CUSTOMER REFERENCE ONLY. TOLERANCES FOR MILLIMETERS ARE: UNLESS OTHERWISE SPECIFIED 0.5 - 8mm ± 0.20mm 8 - 30mm ± 0.40mm 30 - 120mm ± 0.50mm | SHEET | 1 OF 1 | | |
| 4 | FERRULE | BRASS | NICKEL | 1 | | | PART NO. | |
| 3 | CONTACT PIN | BRASS | GOLD | 1 | | | 112562 | |
| 2 | INSULATOR | TEFLON | NATURAL | 1 | | | | |
| 1 | SHELL/BODY | BRASS | NICKEL | 1 | | | | |
| DESCRIPTION | | | | MATERIAL | FINISH | QTY | | |
| CAD FILE | | | | C:/112/112562.DWG | DWG. NO. | 112562.DWG | REV. A | |
| | | | | SIZE | A | SCALE | NA | |