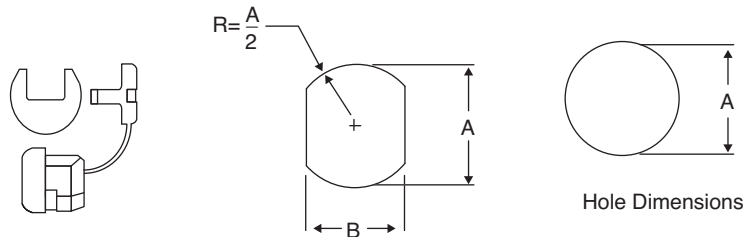


Bushing Dimensions



Hole Dimensions

DIMENSIONS in.

EPD's one piece Strain Relief Bushings securely anchor, absorb, and protect cables and wires from push/pull and twist forces, while insulating them from irregular or sharp panel edges. Most of these tough Nylon bushings meet all Underwriters Laboratories' stringent pull-out and temperature specifications and meet Canadian Standards Association Requirements. They are easily and quickly installed with special installation pliers or other hand or production tools. Stock sizes are in Black H.S. Nylon, and the temperature index is 105° Centigrade (U.L. rated 94v2).

Note: All product listed have flat sides. A round hole allows the cord and strain relief side to side rotation, while the hole with flats does not.

Continued on Page 2

**Available from Mouser Electronics
1-800-346-6873 / www.mouser.com**

EPD-200757

Specifications are subject to change without notice. No liability or warranty implied by this information. Environmental compliance based on producer documentation.

NOTE: 561-MP2L10, 561-MP2P4, & 561-MP13L1 are not UL Recognized.

Item Number	Description	Cross Section of Cable	Cable Size	Cable Type	Gauge	Strap Type *	Flats B	Max. Panel Thk. C	Length D	Width E	Diameter A
561-MP2L10	MP2L1	Flat	.120 X .220	SPT-1	18/2	"Y"	0.330	0.125	0.410	0.420	0.375
561-MP2M4	MP2M4	Round	.156 X .187	AWN	14.000	"Y"	0.330	0.062	0.410	0.391	0.375
561-MP2M5	MP2M5	Round	.125 X .156	AWN	16.000	"Y"	0.330	0.062	0.410	0.391	0.375
561-MP2P4	MP2P4	Flat	.120 X .220	SPT-1	18/2	"Y"	0.330	0.062	0.410	0.420	0.375
561-MP3P4	MP3P4	Flat	.120 X .220, .120 X .220	SP-1, SPT-1	18/2, 18/2	"Y"	0.390	0.062	0.410	0.484	0.437
561-MP4J4	MP4J4	Flat	.120 X .300	SPT-1, SPT-2 HPN	18/3, 18/2, 18/2	"Y"	0.465	0.032	0.406	0.578	0.500
561-MP4K1	MP4K1	Flat	.150 X .400, .160 X .300, .160 X .300, .150 X .280, .150 X .280	SPT-2, HPN SPT-2, HPN, SPT-2	18/3, 16/2 16/2, 18/2, 18/2	"Y"	0.460	0.095	0.495	0.565	0.500
561-MP4K1Z	MP4K1Z	Flat	.150 X .400, .160 X .300, .160 X .300, .150 X .280, .150 X .280	SPT-2, HPN, SPT-2, HPN, SPT-2	18/3, 16/2, 16/2, 18/2, 18/2	"Z"	0.460	0.095	0.495	0.565	0.500
561-MP4K4	MP4K4	Flat	.120 X .300	SPT-2, HPN	18/2, 18/2	"Y"	0.465	0.100	0.406	0.578	0.500
561-MP4L1	MP4L10	Flat	.150 X .400, .160 X .300, .160 X .300, .150 X .280, .150 X .280	SPT-1, HPN, SPT-2, HPN, SPT-2	18/3, 16/2, 16/2, 18/2, 18/2	"Z"	0.460	0.187	0.495	0.565	0.500
561-MP4L4	MP4L4	Flat	.120 X .300	SPT-1, SPT-2, HPN	18/3, 18/2, 18/2	"Y"	0.465	0.156	0.406	0.578	0.500
561-MP4N4	MP4N4	Flat	.120 X .300	SPT-2, HPN	18/2, 18/2	"Y"	0.465	0.062	0.406	0.578	0.500
561-MP5K4	MP5K4	Flat	.150 X .400	SPT-2	16/2	"Y"	0.530	0.125	0.609	0.625	0.562
561-MP5KN4	MP5KN4	Flat	.150 X .400, .160 X .300	SPT-2, SPT-2	18/3, 16/2	"Y"	0.530	0.062	0.609	0.625	0.562
561-MP5N4	MP5N4	Round	.250, .250, .255 .255, .290	SV, SVT, SV SVT, HPD	18/2, 18/2, 18/3 18/3, 16/2	"Y"	0.450	0.062	0.438	0.578	0.500
561-MP5P4	MP5P4	Round	.250, .250, .255 .255, .290	SV, SVT, SV SVT, HPD	18/2, 18/2, 18/3 18/3, 16/2	"Y"	0.450	0.100	0.438	0.578	0.500
561-MP5W1	MP5W1	Flat	.120 X .300, .160 X .300 .160 X .410, .160 X .370	SPT-2, SPT-2 SPT-2, HPN	18/3, 16/2 16/3, 16/3	"Y"	0.530	0.125	0.609	0.625	0.562
561-MP6L1	MP6L10	Round	.325 X .360	SJ, SJT, SJO	18/2, 18/3, 16/2 16/3, 16/2, 16/3	"Z"	0.550	0.125	0.666	0.725	0.625
561-MP6N34	MP6N34	Round	.355, .405, .430	SJ, SJT, SJT	16/3, 18/3, 16/3	"Y"	0.550	0.062	0.580	0.703	0.625
561-MP6N35	MP6N35	Round	.390, .390, .405, .405, .390	SJO, SJ, SJT, SJO, SJT	18/2, 18/2, 16/2 18/2, 18/2	"Y"	0.550	0.062	0.580	0.703	0.625
561-MP6N4	MP6N4	Round	.300, .300	SJT, SJO	18/2, 18/2	"Y"	0.550	0.062	0.580	0.703	0.625
561-MP6N44	MP6N44	Flat	.120 X .300	SPT-1	18/3	"Y"	0.570	0.062	0.600	0.690	0.625
561-MP6N45	MP6N45	Flat	.120 X .300	SPT-1	18/3	"Y"	0.545	0.062	0.600	0.690	0.625
561-MP6P34	MP6P34	Round	.325 X .360	SJ, SJT, SJT, SJO	18/3, 16/3, 18/3 18/3	"Y"	0.550	0.125	0.580	0.703	0.625
561-MP6P35	MP6P35	Round	.325 X .360	SJ, SJ, SJ, SJT, SJT, SJO, SJO, SJO	18/2, 18/3, 16/2, 16/2, 18/2, 18/2, 16/2, 18/3	"Y"	0.550	0.125	0.580	0.703	0.625
561-MP6P4	MP6P40	Round	.300	SJ, SJT, SJO	18/2	"Y"	0.550	0.125	0.580	0.703	0.625
561-MP6W1	MP6W10	Round	.300	SJ, SJT, SJO	18/2	"Y"	0.465	0.090	0.437	0.563	0.500
561-MP7K2	MP7K2	Round	.325 X .360	SJ, SJ, SJ, SJ, SJT, SJT, SJO, SJO, SJO	18/4, 16/2, 16/3, 14/2, 18/3, 16/3, 14/2, 16/3, 18/4	"Z"	0.770	0.125	0.750	0.922	0.875
561-MP7K3	MP7K3	Round	.325 X .360	SJ, SJ, SJT, SJO, SJO, SJO	18/3, 16/2, 16/2, 18/3, 16/2	"Z"	0.770	0.125	0.750	0.922	0.875
561-MP7P2	MP7P2	Round	.360, .370, .405, .430, .405, .430, .405, .390, .390, .405	SJTO, SJT, S, S, STO, STO, S, S, STO, STO	18/4, 14/3, 18/3 16/3, 18/3, 16/3 16/2, 18/2, 18/2 16/2	"X"	0.660	0.125	0.745	0.830	0.750
561-MP7P3	MP7P3	Flat	.160 X .410	SPT-2	16/3	"Z"	0.657	0.125	0.590	0.785	0.736
561-MP7W20	MP7W2	Round	.370 - .425, .370 - .425, .390 - .430, .390 - .430, .390 - .430, .390 - .430, .390 - .430	SJT, SJT, S, S, STO, STO, STO	14/3, 12/3, 18/3 16/3, 16/2, 16/3 18/3	"Z"	0.770	0.125	0.750	0.922	0.875
561-MP8P2	MP8P2	Round	.530 - .600	S, S, ST	14/2, 14/3, 12/2	"Z"	0.840	0.125	0.812	0.922	0.875
561-MP9P2	MP9P2	Round	.570, .640, .650, .700	S	12/3, 10/2, 10/3	"Z"	1.000	0.281	0.990	1.215	1.093, 1.125 1.093, 1.187
561-MP13L1	MP13L1	Flat	.120 X .220	SPT-1	18/2	"Z"	0.390	0.062	0.500	0.510	0.437
561-MP14L1	MP14L1	Flat	.150 X .280, .150 X .280, .160 X .300	SPT-2, SPT-2 HPN	18/2, 16/2, 16/2	"Z"	0.450	0.100	0.687	0.563	0.500
561-MP15L1	MP15L1	Round	.250 X .265	SV	18/2, 18/3	"Z"	0.450	0.100	0.687	0.562	0.500
561-MP16L1	MP16L1	Flat	.150 X .400, .160 X .370, .190 X .350, .200 X .370	SP-2, HPN, SPT-3, SPT-3	18/3, 16/3, 18/2, 16/2	"Z"	0.525	0.125	0.875	0.625	0.562
561-MP30-1	MP30-1	Flat	.160 X .410, .120 X .300	SPT-2, SPT-1	16/3, 16/3	"Z"	0.560	0.125	0.670	0.750	0.730
561-23MP302	MP302	Flat	.150 X .400, .160 X .410, .320 X .650	SPT-2, SPT-2 SPT-3	18/3, 18/3, 16/3	"Z"	0.625	0.100	0.460	0.660	0.625 X 0.375
561-MP31-2	MP31-2	Flat, Round	.180 - .425, .425 - .475	SJT, SPT-3	12/3, 12/3	"Z"	0.840	0.125	0.812	0.922	0.875
561-MP33-10	MP33-10	Flat	.245 X 0.425, .240 X .420, .240 X .525	SPT-3, SPT-3, HPN	16/3, 14/2, 14/3	"Z"	0.875	0.125	0.770	0.895	0.750 X 0.875
561-MP34-2X	MP34-2X	Flat	.240 X .420, .290 X .650	SPT-3, SPT-3	14/3, 12/3	"X"	0.840	0.125	0.812	0.922	0.875

* The strap type brings the mating half of the part from different locations.

"X" folds from the side

"Z" folds from the bottom

"Y" folds from between X and Z

Available from Mouser Electronics
1-800-346-6873 / www.mouser.com

EPD-200757

Specifications are subject to change without notice. No liability or warranty implied by this information. Environmental compliance based on producer documentation.