

Cable Gland / Standard Straight-Through - Polyamide

Material:

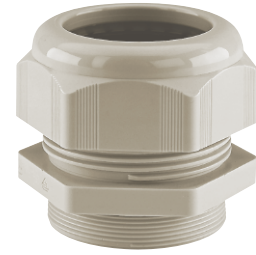
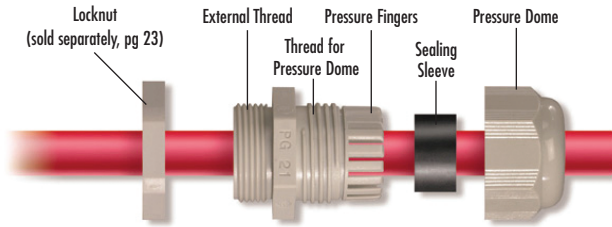
- Body: Polyamide 6
- Seal: Neoprene

Technical properties:

- Maximum strain relief through clamping range
- IP68 achieved without seal rings (PG and metric only)
- Trapezoidal thread with high torque guarantees tight and permanent fit of the dome nut
- Gas- and watertight

Applications:

- Machines and devices



| Temperature Range | |
|--------------------------------|--------------------------------|
| PA6 | Neoprene |
| -25 to 100°C (-13 to 212°F) | -25 to 100°C (-13 to 212°F) |



Metric Only



E184471

PG Thread

| Outer thread | Clamping range mm | Cat. No. Light Grey | Cat. No. Black | Std. Pk. |
|--------------|-------------------|---------------------|----------------|----------|
| PG 7 | 1.5-5 | 5309107 | 5309207 | 100 |
| PG 7 | 2.5-6.5 | 5308707 | 5308507 | 100 |
| PG 9 | 1.5-6 | 5309109 | 5309209 | 50 |
| PG 9 | 2.5-8 | 5308709 | 5308509 | 50 |
| PG 11 | 2-7 | 5309111 | 5309211 | 50 |
| PG 11 | 3.5-10 | 5308711 | 5308511 | 50 |
| PG 13.5 | 3-9 | 5309113 | 5309213 | 50 |
| PG 13.5 | 5-12 | 5308713 | 5308513 | 50 |
| PG 16 | 5-12 | 5309116 | 5309216 | 50 |
| PG 16 | 7-14 | 5308716 | 5308516 | 50 |
| PG 21 | 7-16 | 5309121 | 5309221 | 25 |
| PG 21 | 9-18 | 5308721 | 5308521 | 25 |
| PG 29 | 11-21 | 5309129 | 5309229 | 20 |
| PG 29 | 14-25 | 5308729 | 5308529 | 20 |
| PG 36 | 13-26 | 5309136 | 5309236 | 10 |
| PG 36 | 18-32 | 5308736 | 5308536 | 10 |
| PG 42 | 17-31 | 5309142 | 5309242 | 5 |
| PG 42 | 24-38.5 | 5308737 | 5308537 | 5 |
| PG 48 | 26-39 | 5309148 | 5309248 | 5 |
| PG 48 | 35-48 | 5308738 | 5308538 | 5 |

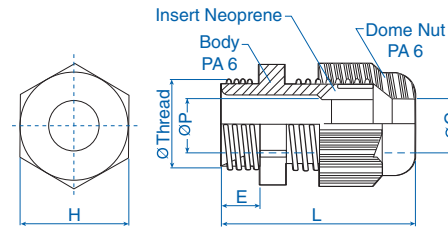
NPT Thread

| Outer thread | Clamping range mm | Cat. No. Light Grey | Cat. No. Black | Std. Pk. |
|--------------|-------------------|---------------------|----------------|----------|
| NPT 3/8" | 1.5-6 | 5308904 | 5308924 | 50 |
| NPT 3/8" | 2.5-8 | 5308900 | 5308920 | 50 |
| NPT 1/2" | 3-9 | 5308905 | 5308925 | 50 |
| NPT 1/2" | 5-12 | 5308901 | 5308921 | 50 |
| NPT 3/4" | 7-16 | 5308906 | 5308926 | 20 |
| NPT 3/4" | 9-18 | 5308902 | 5308922 | 20 |
| NPT 1" | 11-21 | 5308907 | 5308927 | 20 |
| NPT 1" | 14-25 | 5308903 | 5308923 | 20 |

Metric Thread*

| Outer thread | Clamping range mm | Cat. No. Light Grey | Cat. No. Black | Std. Pk. |
|---------------|-------------------|---------------------|----------------|----------|
| M 12 x 1.5 | 1.5-5 | 5309612 | 5309712 | 100 |
| M 12 x 1.5 | 2.5-6.5 | 5308950 | 5308940 | 100 |
| M 16 x 1.5/9 | 1.5-6 | 5309615 | 5309715 | 50 |
| M 16 x 1.5/11 | 2-7 | 5309616 | 5309716 | 50 |
| M 16 x 1.5/9 | 2.5-8 | 5308958 | 5308948 | 50 |
| M 16 x 1.5/11 | 3.5-10 | 5308951 | 5308941 | 50 |
| M 20 x 1.5/13 | 3-9 | 5309619 | 5309719 | 50 |
| M 20 x 1.5/16 | 5-12 | 5309620 | 5309720 | 50 |
| M 20 x 1.5/13 | 5-12 | 5308959 | 5308949 | 50 |
| M 20 x 1.5/16 | 7-14 | 5308952 | 5308942 | 50 |
| M 25 x 1.5/16 | 5-12 | 5309624 | 5309724 | 50 |
| M 25 x 1.5/21 | 7-16 | 5309625 | 5309725 | 25 |
| M 25 x 1.5/16 | 7-14 | 5308960 | 5308962 | 50 |
| M 25 x 1.5/21 | 9-18 | 5308953 | 5308943 | 25 |
| M 32 x 1.5 | 11-21 | 5309632 | 5309732 | 20 |
| M 32 x 1.5 | 14-25 | 5308954 | 5308944 | 20 |
| M 40 x 1.5 | 13-26 | 5309640 | 5309740 | 10 |
| M 40 x 1.5 | 18-32 | 5308955 | 5308945 | 10 |
| M 50 x 1.5 | 17-31 | 5309650 | 5309750 | 5 |
| M 50 x 1.5 | 24-38.5 | 5308956 | 5308946 | 5 |
| M 63 x 1.5 | 26-39 | 5309663 | 5309763 | 5 |
| M 63 x 1.5 | 35-48 | 5308957 | 5308947 | 5 |

| Thread Size | H mm | E mm | Dimensions | | | ØP mm | ØThread mm |
|-------------|------|------|------------|-------|-------|-------|------------|
| | | | L mm | ØC mm | ØP mm | | |
| PG7 | 15 | 8 | 32 | 6.7 | 6.8 | 12.5 | |
| PG9 | 19 | 8 | 35 | 8.5 | 8.7 | 15.2 | |
| PG11 | 22 | 8 | 37 | 10.5 | 10.5 | 18.6 | |
| PG13.5 | 24 | 9 | 39 | 12.5 | 12.5 | 20.4 | |
| PG16 | 27 | 10 | 43 | 14.5 | 14.5 | 22.5 | |
| PG21 | 33 | 11 | 50 | 18.5 | 18.5 | 28.3 | |
| PG29 | 42 | 11 | 53 | 25.5 | 25.5 | 37.0 | |
| PG36 | 53 | 13 | 65 | 32.5 | 32.5 | 47.0 | |
| PG42 | 60 | 13 | 68 | 39.0 | 39.0 | 54.0 | |
| PG48 | 70 | 14 | 70 | 48.5 | 48.5 | 59.3 | |
| NPT 3/8 | 19 | 11 | 38 | 8.5 | 8.7 | 17.1 | |
| NPT 1/2 | 24 | 14 | 44 | 12.5 | 12.5 | 21.2 | |
| NPT 3/4 | 33 | 15 | 54 | 18.5 | 18.5 | 26.7 | |
| NPT 1 | 42 | 18 | 60 | 25.5 | 25.5 | 33.3 | |
| M12x1.5 | 15 | 8 | 32 | 6.7 | 6.8 | 12.0 | |
| M16x1.5/9 | 19 | 10 | 37 | 8.5 | 8.5 | 16.0 | |
| M16x1.5/11 | 22 | 10 | 39 | 10.5 | 10.5 | 16.0 | |
| M20x1.5/13 | 24 | 10 | 40 | 12.5 | 12.5 | 20.0 | |
| M20x1.5/16 | 27 | 10 | 43 | 14.5 | 14.5 | 20.0 | |
| M25x1.5/16 | 27 | 10 | 45 | 14.5 | 14.5 | 25.0 | |
| M25x1.5/21 | 33 | 10 | 49 | 18.5 | 18.5 | 25.0 | |
| M32x1.5 | 42 | 10 | 52 | 25.5 | 25.5 | 32.0 | |
| M40x1.5 | 53 | 10 | 62 | 32.5 | 32.5 | 40.0 | |
| M50x1.5 | 60 | 12 | 67 | 39.0 | 39.0 | 50.0 | |
| M63x1.5 | 70 | 12 | 68 | 48.5 | 48.5 | 63.0 | |



* Extended thread available consult Altech