

Cable Gland / ATEX - Polyamide

Material:

- Body: Polyamide 6
- Seal: Neoprene
- Color: Blue

Technical Properties:

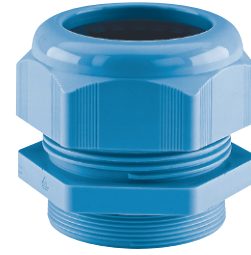
- Maximum strain relief through clamping range
- Gland must be mounted with flat seal and metal locknut
- Trapezoidal thread with high torque guarantees tight and permanent fit of the dome nut
- Gas- and watertight

Applications:

- Explosion endangered areas
- Machines and devices
- Measuring and control engineering
- Plant installations

Temperature Range

-20 to 60°C
(-4 to 140°F)



L.C.I.E. ATEX

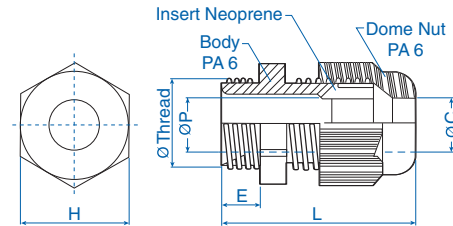
NPT Thread

| Outer thread | Clamping range mm | Cat. No. Blue | Std. Pk. |
|--------------|-------------------|---------------|----------|
| NPT 3/8" | 2.5-8 | 5507760 | 50 |
| NPT 1/2" | 5-12 | 5507761 | 50 |
| NPT 3/4" | 9-18 | 5507762 | 20 |
| NPT 1" | 14-25 | 5507763 | 20 |

Metric Thread*

| Outer thread | Clamping range mm | Cat. No. Blue | Std. Pk. |
|---------------|-------------------|---------------|----------|
| M 12 x 1.5 | 2.5-6.5 | 5507560 | 50 |
| M 16 x 1.5/9 | 2.5-8 | 5507561 | 50 |
| M 16 x 1.5/11 | 3.5-10 | 5507562 | 50 |
| M 20 x 1.5/13 | 5-12 | 5507563 | 50 |
| M 20 x 1.5/16 | 7-14 | 5507564 | 50 |
| M 25 x 1.5/16 | 7-14 | 5507565 | 20 |
| M 25 x 1.5/21 | 9-18 | 5507566 | 20 |
| M 32 x 1.5 | 14-25 | 5507567 | 20 |
| M 40 x 1.5 | 18-32 | 5507568 | 20 |
| M 50 x 1.5 | 24-38.5 | 5507569 | 10 |
| M 63 x 1.5 | 35-48 | 5507570 | 5 |

| Thread Size | Dimensions | | | | | |
|-------------|------------|------|------|-------|-------|------------|
| | H mm | E mm | L mm | ØC mm | ØP mm | ØThread mm |
| NPT 3/8 | 19 | 11 | 38 | 8.5 | 8.7 | 17.1 |
| NPT 1/2 | 24 | 14 | 44 | 12.5 | 12.5 | 21.2 |
| NPT 3/4 | 33 | 15 | 54 | 18.5 | 18.5 | 26.7 |
| NPT 1 | 42 | 18 | 60 | 25.5 | 25.5 | 33.3 |
| M12x1.5 | 15 | 8 | 32 | 6.7 | 6.8 | 12.0 |
| M16x1.5/9 | 19 | 10 | 37 | 8.5 | 8.5 | 16.0 |
| M16x1.5/11 | 22 | 10 | 39 | 10.5 | 10.5 | 16.0 |
| M20x1.5/13 | 24 | 10 | 40 | 12.5 | 12.5 | 20.0 |
| M20x1.5/16 | 27 | 10 | 43 | 14.5 | 14.5 | 20.0 |
| M25x1.5/16 | 27 | 10 | 45 | 14.5 | 14.5 | 25.0 |
| M25x1.5/21 | 33 | 10 | 49 | 18.5 | 18.5 | 25.0 |
| M32x1.5 | 42 | 10 | 52 | 25.5 | 25.5 | 32.0 |
| M40x1.5 | 53 | 10 | 62 | 32.5 | 32.5 | 40.0 |
| M50x1.5 | 60 | 12 | 67 | 39.0 | 39.0 | 50.0 |
| M63x1.5 | 70 | 12 | 68 | 48.5 | 48.5 | 63.0 |



* Extended thread available consult Altech