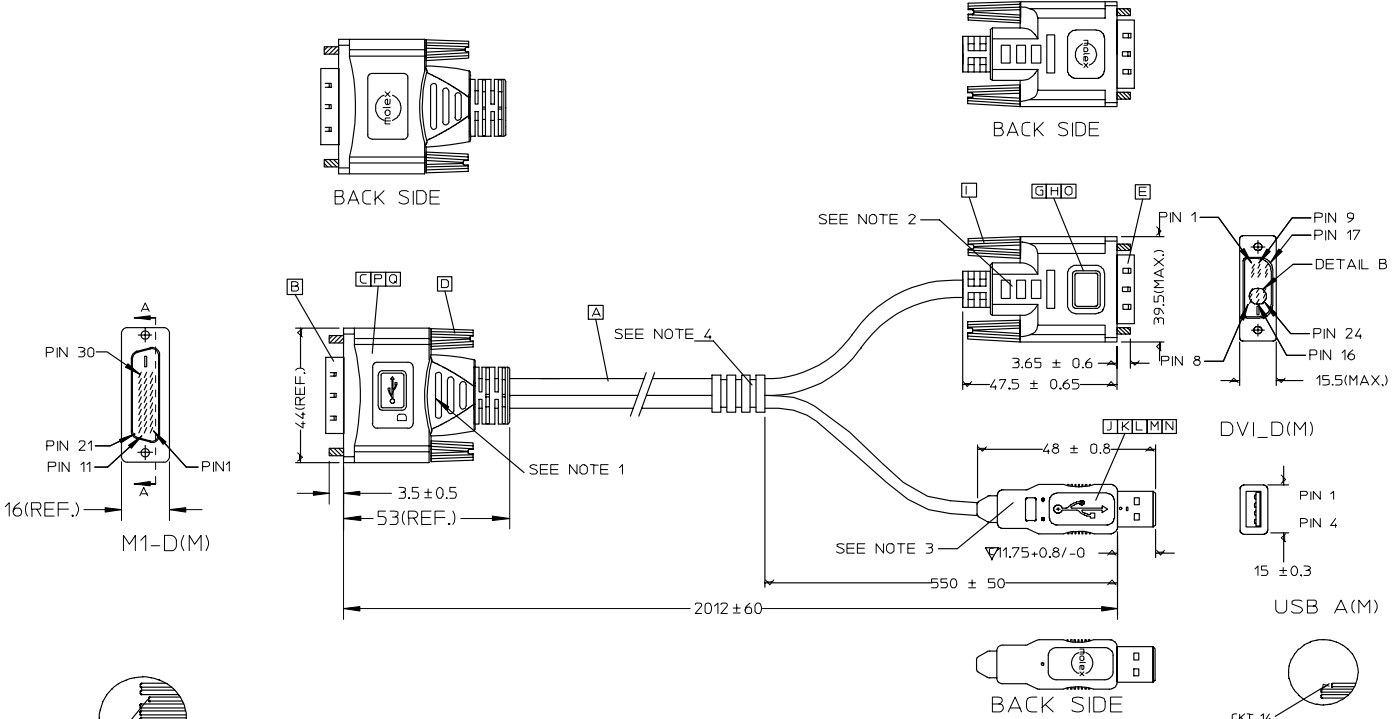


7 6 5 4 3 2 1

E
D
C
B
A

E
D
C
B
A



EC NO: DG2006-0069 DRWN:PDAI CHYD: APPR:KAN A	DESCRIPTION 2005/10/12 2005/10/13 2005/10/13	QUALITY SYMBOLS	GENERAL TOLERANCES (UNLESS SPECIFIED)		DIMENSION STYLE	SCALE	DESIGN UNITS	THIRD ANGLE PROJECTION	
		$\nabla=0$ $\nabla=1$	mm	INCH	MM ONLY	---	METRIC		
		4 PLACES	±---	±---	DRAWN BY	DATE	TITLE		
		3 PLACES	±---	±---	PDAI	2005/10/06	M1-D TO DVI-D+USB CABLE ASS'Y 6.6FT		
2 PLACES	±---	±---	CHECKED BY	DATE	MATERIAL NO.				
1 PLACE	±---	±---	PDAI	2005/10/06	68804-0004				
ANGULAR ±1/2°			APPROVED BY	DATE	DOCUMENT NO.				
DRAFT WHERE APPLICABLE MUST REMAIN WITHIN DIMENSIONS			ZXDENG	2005/10/06	SD-68804-004				
SIZE					THIS DRAWING CONTAINS INFORMATION THAT IS PROPRIETARY TO MOLEX INCORPORATED AND SHOULD NOT BE USED WITHOUT WRITTEN PERMISSION				
A4					SHEET NO. 1 OF 2				

ib_frame_A4_P_ME_T Rev. D 2004/04/02

6 5 4 3 2 1

7 6 5 4 3 2 1

PIN ASSIGNMENT:

USB A	PIN 4	USB RETRUN	PIN 25	BLACK
	PIN 3	SUB D+	PIN 16	GREEN
	PIN 2	USB D-	PIN 17	WHITE
	PIN 1	USB +5VDC	PIN 24	RED
	SHIELD	GROUND	SHIELD	BRAID
DVI-D	PIN 3	TMDS DATA 2 SHIELD	PIN 3	DRAIN WIRE
	PIN 2	TMDS DATA 2 +	PIN 1	RED
	PIN 1	TMDS DATA 2 -	PIN 2	WHITE
	PIN 11	TMDS DATA 1 SHIELD	PIN 13	DRAIN WIRE
	PIN 10	TMDS DATA 1 +	PIN 11	GREEN
	PIN 9	TMDS DATA 1 -	PIN 12	WHITE
	PIN 19	TMDS DATA 0 SHIELD	PIN 23	DRAIN WIRE
	PIN 18	TMDS DATA 0 +	PIN 21	BLUE
	PIN 17	TMDS DATA 0 -	PIN 22	WHITE
	PIN 22	TMDS CLOCK SHIELD	PIN 4	DRAIN WIRE
	PIN 23	TMDS CLOCK +	PIN 14	BROWN
	PIN 24	TMDS CLOCK -	PIN 15	WHITE
	PIN 16	HOT PLUG DETECT	PIN 8	WHITE
	PIN 15	DDC SIGNAL & POWER RETURN	PIN 25	ORANGE
PIN 7	DDC DATA(SDA)	PIN 26	RED	
PIN 6	DDC CLOCK(SCL)	PIN 27	VIOLET	
PIN 14	DDC +5 VDC	PIN 28	YELLOW	
	CABLE FUNCTION	M1-A	COLOR	

- NOTE: 1. M1-D BOOT MOLDED WITH BLACK PVC RESIN 887800042.
 2. DVI-D BOOT MOLDED WITH SNOW WHITE PVC RESIN 887800076.
 3. USB-A MOLDED WITH BLACK PVC RESIN 887800019.
 4. STOPPER MOLDED WITH BLACK PVC RESIN 887800019.
 5. SHORTCIRCUIT AMONG DRAIN WIRES IS ACCEPTABLE
 6. MECHANICAL SPECIFICATION:
 ▽ 6.1 CABLE SHOULD STAND THE PULL FORCE 89-111N FOR 30 SECONDS WITH NO VISIBLE TERMINATION DAMAGE.
 6.2 CABLE SHOULD PASS THE FLEX TEST IN 100 CYCLES AT EACH OF PLANES, PER EIA 364-41, CONDITION 1.
 7. ALL MATERIAL MUST MEET MX RoHS COMPLIANCE.

Q	COPPER FOIL 887801105		1
P	PRE-CUT COPPERFOIL 887801083		1
O	33646-7.5MIL UL-TAPE 887804777	55(REF.)	1
N	AWG26-28 TERMINAL 887809091		2
M	AWG20-24 TERMINAL 887809090		2
L	USB A HOUSING 887809086		1
K	USB A REAR SHELL 887809084		1
J	USB A FRONT SHELL 887809083		1
I	DVI THUMB SCREW 887806006		2
H	FERRULE 887899376		1
G	WIRE MANAGEMENT BLOCK 887899433		2
E	DVI SINGLE LINK CONNECTOR 743230001		1
D	M1 THUMB SCREW 887806146		2
C	METAL CAN 887899399		1
B	P&D_D STD PLUG ASSY 674850009		1
A	DVI DIGITAL(SL) + USB CABLE 887808298	2012(REF.)	1
ITEM	DESCRIPTION	L	QTY.

EC NO: DG2006-0069 DRWNPDAI CHYKD: APPR:KAN A	2005/10/12 2005/10/13 2005/10/13	DESCRIPTION REV	QUALITY SYMBOLS	GENERAL TOLERANCES (UNLESS SPECIFIED)	DIMENSION STYLE	SCALE	DESIGN UNITS	THIRD ANGLE PROJECTION	
			▼=0 ▽=0	mm INCH 4 PLACES ±--- ±--- 3 PLACES ±--- ±--- 2 PLACES ±--- ±--- 1 PLACE ±--- ±--- ANGULAR ±1/2°	MM ONLY	---	METRIC	DRAWN BY PDAI DATE 2005/10/06 CHECKED BY PDAI DATE 2005/10/06 APPROVED BY ZXDENG DATE 2005/10/06	TITLE M1-D TO DVI-D+USB CABLE ASS'Y 6.6FT
			DRAFT WHERE APPLICABLE MUST REMAIN WITHIN DIMENSIONS	MATERIAL NO. 68804-0004	DOCUMENT NO. SD-68804-004	SHEET NO. 2 OF 2			
			SIZE A4	THIS DRAWING CONTAINS INFORMATION THAT IS PROPRIETARY TO MOLEX INCORPORATED AND SHOULD NOT BE USED WITHOUT WRITTEN PERMISSION					

ib_frame_A4_P_ME_T
Rev. D 2004/04/02

6 5 4 3 2 1