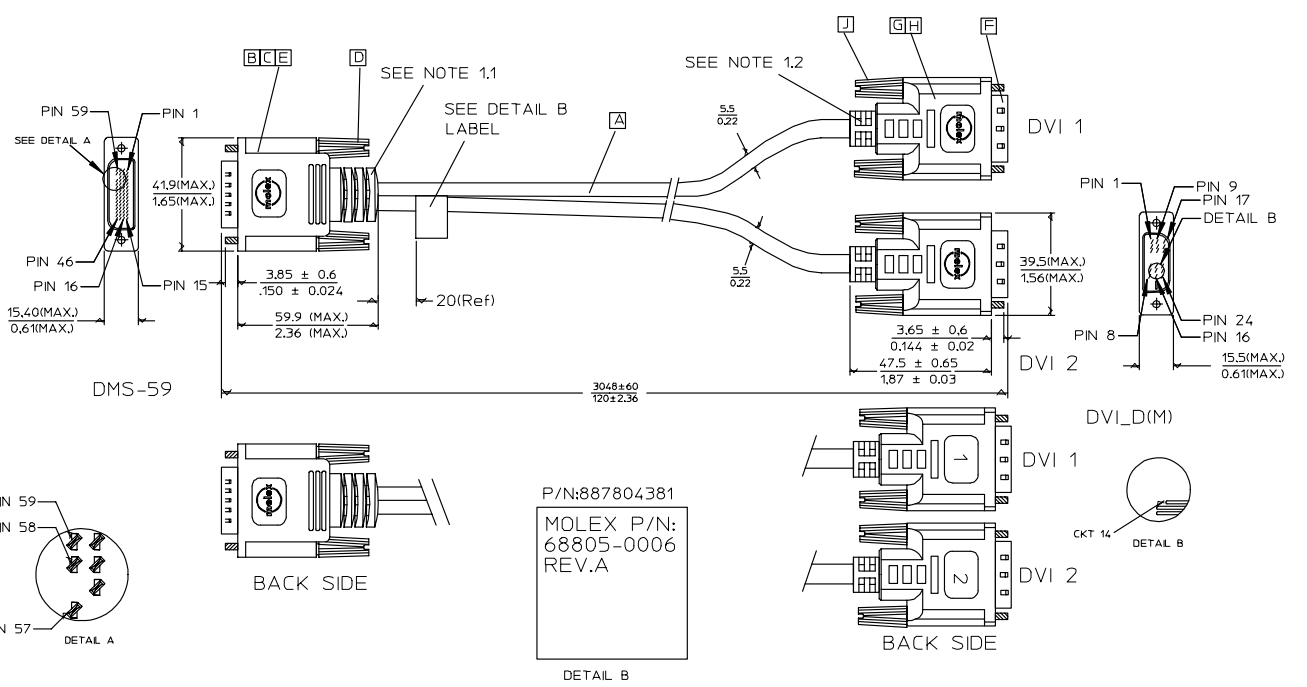


7 6 5 4 3 2 1

E
D
C
B
A

E
D
C
B
A



EC NO: DG2006-0071 DRWN:PDAI CHYD: APPR:KAN A	DESCRIPTION 2005/10/13 2005/10/13 2005/10/13	QUALITY SYMBOLS	GENERAL TOLERANCES (UNLESS SPECIFIED)	DIMENSION STYLE	SCALE	DESIGN UNITS	THIRD ANGLE PROJECTION															
		$\nabla=0$ $\nabla=0$	<table border="1"> <thead> <tr> <th></th> <th>mm</th> <th>INCH</th> </tr> </thead> <tbody> <tr> <td>4 PLACES</td> <td>±---</td> <td>±---</td> </tr> <tr> <td>3 PLACES</td> <td>±---</td> <td>±---</td> </tr> <tr> <td>2 PLACES</td> <td>±---</td> <td>±---</td> </tr> <tr> <td>1 PLACE</td> <td>±---</td> <td>±---</td> </tr> </tbody> </table>		mm	INCH	4 PLACES	±---	±---	3 PLACES	±---	±---	2 PLACES	±---	±---	1 PLACE	±---	±---	MM/IN	---	METRIC	
			mm	INCH																		
		4 PLACES	±---	±---																		
3 PLACES	±---	±---																				
2 PLACES	±---	±---																				
1 PLACE	±---	±---																				
DRAFT WHERE APPLICABLE MUST REMAIN WITHIN DIMENSIONS	DRAWN BY: PDAI CHECKED BY: PDAI APPROVED BY: ZXDENG MATERIAL NO. 68805-0006	DATE: 2005/10/07 DATE: 2005/10/07 DATE: 2005/10/07	TITLE: DMS59 TO DUAL DVI-D(M) CABLE ASS'Y 10FT MOLEX INCORPORATED																			
			SIZE: A4 THIS DRAWING CONTAINS INFORMATION THAT IS PROPRIETARY TO MOLEX INCORPORATED AND SHOULD NOT BE USED WITHOUT WRITTEN PERMISSION	DOCUMENT NO. SD-68805-006	SHEET NO. 1 OF 3																	

ib_frame_A4_P_ME_T
Rev. D 2004/04/02

6 5 4 3 2 1

7 6 5 4 3 2 1

WIRING DIAGRAM:

SHIELD	SHIELD	GROUND	
PIN 24	PIN 32	DVI1_TXC-	WHITE
PIN 23	PIN 31	DVI1_TXC+	BROWN
PIN 22	PIN 57	DVI1_TXC RTN	BRAID
PIN 19	PIN 53	DVI1_TX0 RTN	BRAID
PIN 18	PIN 29	DVI1_TX0+	BLUE
PIN 17	PIN 30	DVI1_TX0-	WHITE
PIN 16	PIN 36	DVI1_HPD	WHITE
PIN 15	PIN 54	SYNCS	ORANGE
PIN 14	PIN 5	+5V	YELLOW
PIN 11	PIN 34	DVI1_TX1 RTN	BRAID
PIN 10	PIN 27	DVI1_TX1+	GREEN
PIN 9	PIN 28	DVI1_TX1-	WHITE
PIN 7	PIN 7	DVI1_SDA	RED
PIN 6	PIN 6	DVI1_SCL	VIOLET
PIN 3	PIN 35	DVI1_TX2 RTN	BRAID
PIN 2	PIN 25	DVI1_TX2+	RED
PIN 1	PIN 26	DVI1_TX2-	WHITE
DVI 1	DMS59	CABLE FUNCTION	WIRE COLOR

SHIELD	SHIELD	GROUND	
PIN 24	PIN 44	DVI2_TXC-	WHITE
PIN 23	PIN 45	DVI2_TXC+	BROWN
PIN 22	PIN 49	DVI2_TXC RTN	BRAID
PIN 19	PIN 43	DVI2_TX0 RTN	BRAID
PIN 18	PIN 16	DVI2_TX0+	BLUE
PIN 17	PIN 17	DVI2_TX0-	WHITE
PIN 16	PIN 40	DVI2_HPD	WHITE
PIN 15	PIN 52	SYNCS	ORANGE
PIN 14	PIN 11	+5V	YELLOW
PIN 11	PIN 42	DVI2_TX1 RTN	BRAID
PIN 10	PIN 18	DVI2_TX1+	GREEN
PIN 9	PIN 19	DVI2_TX1-	WHITE
PIN 7	PIN 9	DVI2_SDA	RED
PIN 6	PIN 10	DVI2_SCL	VIOLET
PIN 3	PIN 41	DVI2_TX2 RTN	BRAID
PIN 2	PIN 20	DVI2_TX2+	RED
PIN 1	PIN 21	DVI2_TX2-	WHITE
DVI 2	DMS59	CABLE FUNCTION	WIRE COLOR

EC NO: DG2006-0071 DRW: PDAI CHKD: 2005/10/13 APPR: KAN 2005/10/13 DESCRIPTION A REV	QUALITY SYMBOLS	GENERAL TOLERANCES (UNLESS SPECIFIED)	DIMENSION STYLE	SCALE	DESIGN UNITS	THIRD ANGLE PROJECTION															
	$\nabla=0$ $\nabla=0$	<table border="1"> <tr><th></th><th>mm</th><th>INCH</th></tr> <tr><td>4 PLACES</td><td>±---</td><td>±---</td></tr> <tr><td>3 PLACES</td><td>±---</td><td>±---</td></tr> <tr><td>2 PLACES</td><td>±---</td><td>±---</td></tr> <tr><td>1 PLACE</td><td>±---</td><td>±---</td></tr> </table>		mm	INCH	4 PLACES	±---	±---	3 PLACES	±---	±---	2 PLACES	±---	±---	1 PLACE	±---	±---	MM/IN	---	METRIC	
		mm	INCH																		
	4 PLACES	±---	±---																		
3 PLACES	±---	±---																			
2 PLACES	±---	±---																			
1 PLACE	±---	±---																			
	ANGULAR ±1/2°																				
	DRAFT WHERE APPLICABLE MUST REMAIN WITHIN DIMENSIONS		DRAWN BY PDAI DATE 2005/10/07 CHECKED BY PDAI DATE 2005/10/07 APPROVED BY ZXDENG DATE 2005/10/07	TITLE DMS59 TO DUAL DVI-D(M) CABLE ASS'Y 10FT																	
			MATERIAL NO. 68805-0006 SIZE A4	MOLEX INCORPORATED DOCUMENT NO. SD-68805-006		SHEET NO. 2 OF 3															
THIS DRAWING CONTAINS INFORMATION THAT IS PROPRIETARY TO MOLEX INCORPORATED AND SHOULD NOT BE USED WITHOUT WRITTEN PERMISSION																					

ib_frame_A4_P_ME_T
Rev. D 2004/04/02

6 5 4 3 2 1

7 6 5 4 3 2 1

NOTE:1. OVERMOLD SPECIFICATION

- 1.1 DMS59 BOOT AND DVI BOOT MOLDED WITH SNOW WHITE PVC RESIN .
- 1.1.1 UL94V-0.
- 2. MECHANICAL SPECIFICATION:
 - 2.1 CABLE SHOULD STAND THE PULL FORCE 89-11N FOR 30 SECONDS WITH NO VISIBLE TERMINATION DAMAGE.
 - 2.2 CABLE SHOULD PASS THE FLEX TEST IN 100 CYCLES AT EACH OF PLANES, PER EIA 364-41, CONDITION 1.
- 3. CABLE CONSTRUCTION:
 - DUAL DVI(TMDS 30AWG x 4P + 30AWG x 1P + 28AWG x 3C), OD 5.5mm
- 4. SHORTCIRCUIT AMONG DRAIN WIRES IS ACCEPTABLE.
- 5. THIS PRODUCT MUST MEET MX RoHS COMPLIANCE.

MATERIAL LIST:

ITEM	DESCRIPTION	L	QTY.
J	DVI THUMB SCREW 887806077		4
H	PCB 887899569/887899570		2
G	METAL CAN 887899396		2
F	DVI-D SINGLE CHANNEL G/F CONNECTOR 743230101		2
E	LFH CAN 887899391		1
D	LFH SCREW 887806005		2
C	LFH ASSY 751351000		1
B	LFH TERMINAL 709841014X3/708941099X1		1
A	DVI-D SINGLE CHANNEL 5.5MMX2 CABLE 887808273	3048(REF.)	2

EC NO: DG2006-0071 DRW/PDAI 2005/10/13 CHKD: 2005/10/13 APPR: KAN 2005/10/13 A	DESCRIPTION REV	QUALITY SYMBOLS	GENERAL TOLERANCES (UNLESS SPECIFIED) <table border="1"> <thead> <tr> <th></th> <th>mm</th> <th>INCH</th> </tr> </thead> <tbody> <tr> <td>4 PLACES</td> <td>±---</td> <td>±---</td> </tr> <tr> <td>3 PLACES</td> <td>±---</td> <td>±---</td> </tr> <tr> <td>2 PLACES</td> <td>±---</td> <td>±---</td> </tr> <tr> <td>1 PLACE</td> <td>±---</td> <td>±---</td> </tr> <tr> <td colspan="3">ANGULAR ±1/2°</td> </tr> </tbody> </table>		mm	INCH	4 PLACES	±---	±---	3 PLACES	±---	±---	2 PLACES	±---	±---	1 PLACE	±---	±---	ANGULAR ±1/2°			DIMENSION STYLE	SCALE	DESIGN UNITS	THIRD ANGLE PROJECTION
				mm	INCH																				
		4 PLACES		±---	±---																				
		3 PLACES		±---	±---																				
2 PLACES	±---	±---																							
1 PLACE	±---	±---																							
ANGULAR ±1/2°																									
			MM/IN	---	METRIC																				
			DRAWN BY PDAI	DATE 2005/10/07	TITLE DMS59 TO DUAL DVI-D(M) CABLE ASS'Y 10FT																				
			CHECKED BY PDAI	DATE 2005/10/07	APPROVED BY ZXDENG																				
				DATE 2005/10/07	MATERIAL NO. 68805-0006																				
			DRAFT WHERE APPLICABLE MUST REMAIN WITHIN DIMENSIONS		DOCUMENT NO. SD-68805-006		SHEET NO. 3 OF 3																		
				SIZE A4	THIS DRAWING CONTAINS INFORMATION THAT IS PROPRIETARY TO MOLEX INCORPORATED AND SHOULD NOT BE USED WITHOUT WRITTEN PERMISSION																				

ib_frame_A4_P_ME_T
Rev. D 2004/04/02

6 5 4 3 2 1