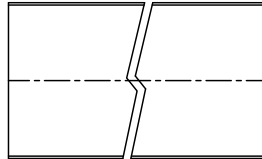
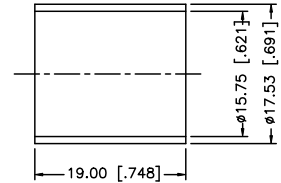
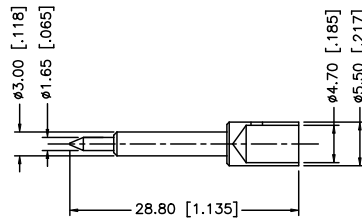
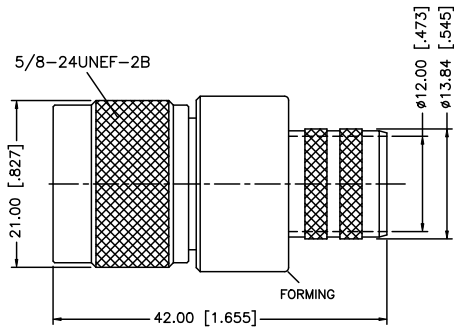
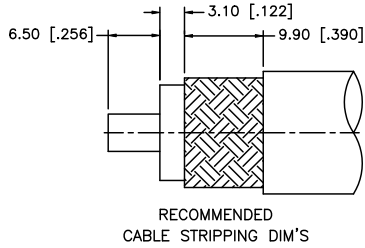


REV.	DATE	ECR NO.	DESCRIPTION
A	01/30/04	-	UPDATE DRAWING FORMAT
B	09/23/08	100043	REVISE HEX CRIMP DIMENSIONS (NOTES 1 AND 2)



HEAT SHRINK TUBE

NOTE:

1. CRIMPED FERRULE HEX CRIMP SIZE .610" [15.50]
2. CONTACT PIN TO SOLDER.

8					UNLESS OTHERWISE SPECIFIED DIMENSIONS ARE IN MILLIMETERS. DIMENSIONS IN [ ] ARE IN INCHES AND FOR CUSTOMER REFERENCE ONLY.	APPROVALS	DATE	<h1 style="color: blue; margin: 0;">Amphenol Connex</h1>	
7					UNLESS OTHERWISE SPECIFIED TOLERANCES FOR MILLIMETERS ARE:	DRAWN	GRS		09/23/08
6					0.5 - 8mm ± 0.20mm	CHECKED			
5	HEAT SHRINK TUBE			1	8 - 30mm ± 0.40mm	ISSUED			
4	FERRULE	COPPER	NEXCOTE	1	30 - 120mm ± 0.50mm	SHEET	1 OF 1		
3	CONTACT PIN	BRASS	GOLD	1	UNLESS OTHERWISE SPECIFIED TOLERANCES FOR INCHES ARE:	PART DESCRIPTION			
2	INSULATOR	PTFE	NATURAL	1	0.020 - .315 = ± 0.007"	<p style="text-align: center; margin: 0;">N CRIMP PLUG - LMR 600 CABLE</p>			
1	BODY	BRASS	NEXCOTE	1	.315 - 1.180 = ± 0.015"				PART NO.
	DESCRIPTION	MATERIAL	FINISH	QTY	1.180 - 4.724 = ± 0.020"	<p style="text-align: center; margin: 0;">172206</p>			
					DO NOT SCALE DRAWING	<p style="text-align: center; margin: 0;">DWG. NO. 172206.DWG</p>			
						<p style="text-align: center; margin: 0;">CAD FILE C:/172/172206.DWG</p>			
						REV.	B	SIZE	A
						SCALE	NA		