

DRAWING No.: M701-330442

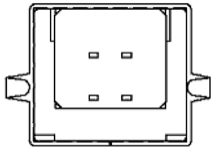
IF IN DOUBT - ASK

©

NOT TO SCALE

THIRD ANGLE PROJECTION

ALL DIMENSIONS IN mm



SPECIFICATIONS:

MATERIAL:-

MOULDING: PBT G.F. UL94V-0, WHITE
CONTACT: PHOSPHOR BRONZE, T=0.25

FINISH:-

SELECTIVE GOLD

ELECTRICAL:-

CURRENT RATING: 1.5 AMP
WORKING VOLTAGE: 30V AC/DC
WITHSTANDING VOLTAGE: 500V AC/MINUTE
CONTACT RESISTANCE: 30 mΩ MAX.
INSULATION RESISTANCE: 1000 MΩ MIN.

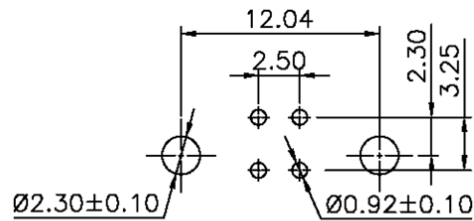
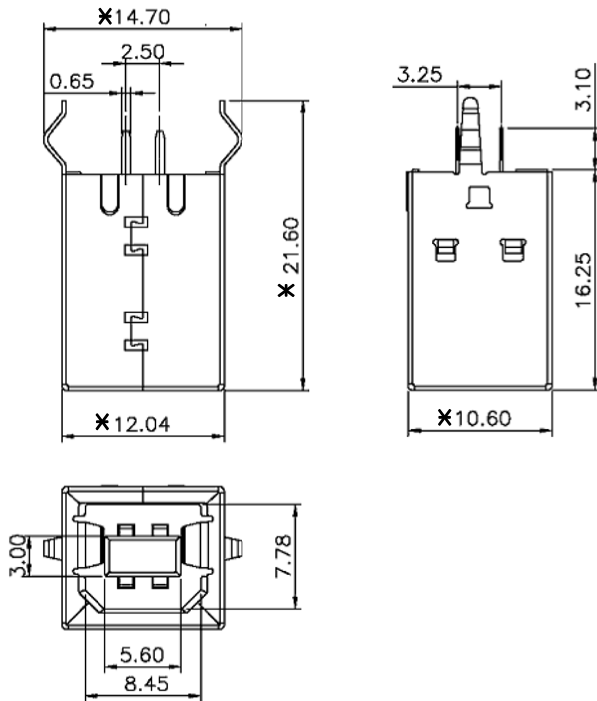
MECHANICAL:-

DURABILITY: 1500 CYCLES MIN.
MATING FORCE: 35N MAX.
WITHDRAWAL FORCE: 10N MIN.

ENVIRONMENTAL:-

TEMPERATURE RANGE: -55°C TO +85°C

NOTES: ALL DIMENSIONS AND NOTES
MARKED * ARE CRITICAL AND
MUST BE CHECKED IN ACCORDANCE
WITH QUALITY DOC. Q1-02A



Recommended PCB Layout

Allan	2	15.07.07	A220
Allan	1	01.08.06	-
NAME	ISS.	DATE	C/NOTE
APPROVED: <i>Alan</i>			
CHECKED: <i>Alan</i>			
DRAWN: Allan			
CUSTOMER REF.:			
ASSEMBLY DRG:			

HARWIN

HARWIN USA
TEL: 603 893 5376
FAX: 603 893 5396
mis@harwin.com

HARWIN Europe (UK)
TEL: 023 9231 4545
FAX: 023 9231 4590
mis@harwin.co.uk

HARWIN Asia
TEL: +65 6 779 4909
FAX: +65 6 779 3868
mis@harwin.com.sg

THIS DRAWING AND ANY
INFORMATION OR DESCRIPTIVE
MATTER SET OUT HEREON ARE
CONFIDENTIAL AND COPYRIGHT
PROPERTY OF THE HARWIN
GROUP AND MUST NOT BE
DISCLOSED, LOANED, COPIED
OR USED FOR MANUFACTURING,
TENDERING OR FOR ANY
OTHER PURPOSE WITHOUT
THEIR WRITTEN PERMISSION.

TOLERANCES
X. = ±0.5mm
X.X = ±0.38mm
X.XX = ±0.13mm
X.XXX = ±0.05mm
ANGLES = ±5°
UNLESS STATED

MATERIAL:
SEE NOTES
FINISH:
SEE NOTES
S/AREA: mm²

TITLE:
USB B TYPE FEMALE DIP 180°
DRAWING NUMBER:
M701-330442
SHT
1 OF 1