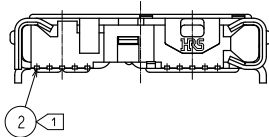
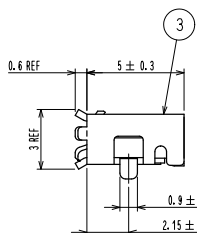
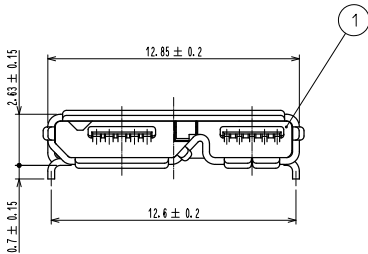
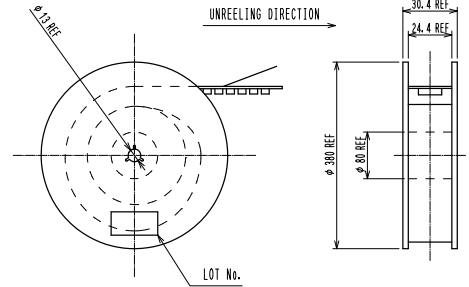
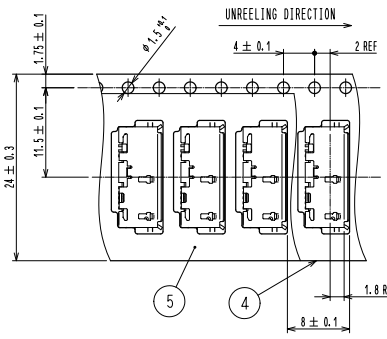
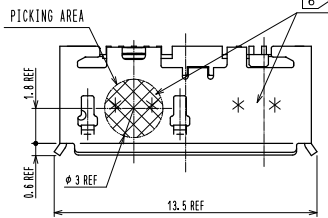


③ DRAWING FOR PACKAGING (FREE)



⑥ LOT NUMBER (4 DIGITS)

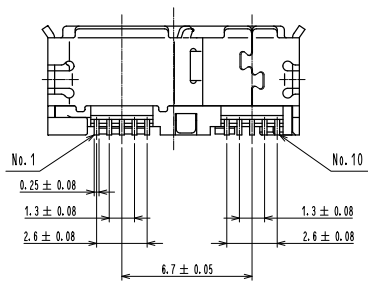
YEAR	MONTH	DAY	DAY CODE	DAY	DAY CODE	LINE No.			
2009	9	1	11	B	21	M	1	A	
2010	0	Feb.	2	12	C	22	N	2	B
2011	1	Mar.	3	13	D	23	O	3	C
2012	2	Apr.	4	14	E	24	P	4	D
2013	3	May	5	15	F	25	R	5	E
		Jun.	6	16	G	26	S	6	F
		Jul.	7	17	H	27	T	7	G
		Aug.	8	18	J	28	U	8	H
		Sep.	9	19	K	29	V	9	I
		Oct.	10	20	L	30	W	10	J
		Nov.							
		Dec.							

注 ① CO-PLANARITY IS WITHIN 0.08 mm.
 ② THE PLATING SPECIFICATION
 CONTACT AREA : PALLADIUM PLATING 0.75 μm MIN. + GOLD PLATING 0.05 μm MIN.
 MOUNTING AREA : GOLD PLATING 0.05 μm MIN.
 UNDERPLATING : NICKEL PLATING 2 μm MIN.

③ 3000 PCS PER REEL.
 4. CONNECTOR OPENING CONFIGURATION SATISFIES USB3.0 SPECIFICATIONS.

5. SCRATCH MARK COULD BE MADE ON THE SURFACE OF REF. NO. 3 DURING ASSEMBLY PROCESS. WHICH DOES NOT AFFECT THE PERFORMANCE. LEVEL OF PLATING BRIGHTNESS COULD VARY. WHICH DOES NOT AFFECT THE PERFORMANCE.

⑥ INDICATE THE LOT NO. WITH 4 DIGITS AT THE SPECIFIED POSITION.

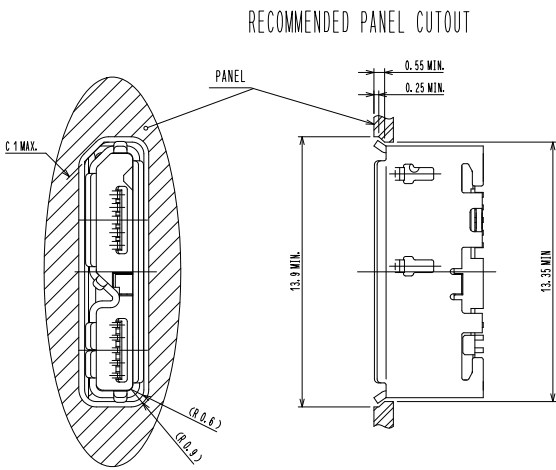


2	COPPER ALLOY	②	5	PE	
1	LCP	UL94V-0. BLACK	4	PS	
3	STAINLESS STEEL	TIN PLATING 1 μm MIN. LUBRICANT			

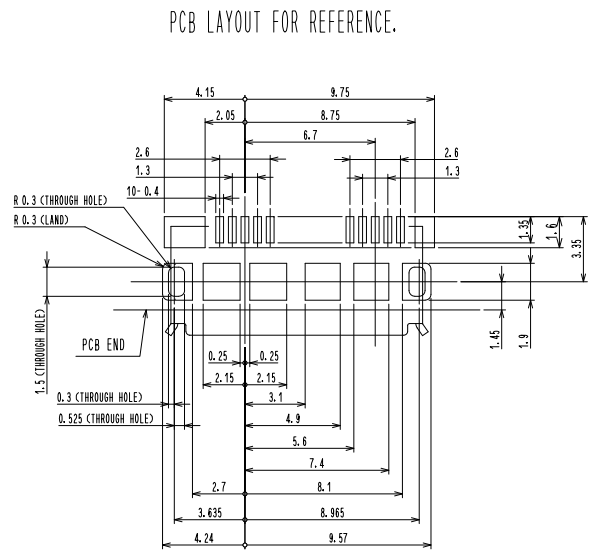
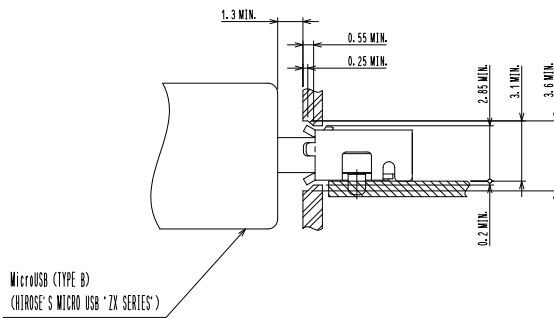
UNITS	MATERIAL	FINISH	REMARKS	NO.	MATERIAL	FINISH	REMARKS
mm							

SCALE	COUNT	DESCRIPTION OF REVISIONS	DESIGNED	CHECKED	DATE
5 : 1	△				

APPROVED	*AG. SUZUKI	10.08.07	DRAWING NO.	EDC3-127028-00
CHECKED	*KM. ICHIKAWA	10.08.07	PART NO.	ZX360D-B-10P
DESIGNED	*HM. KODAMA	10.08.06	CODE NO.	CL242-0500-1-00
DRAWN	*TS. SAKAIZAWA	09.06.15		



MATED WITH CORRESPONDING PLUG



KEEP THE TOLERANCE WITHIN $\pm 0.05\text{mm}$

HRS	DRAWING NO.	EDC3-127028-00	
	PART NO.	ZX360D-B-10P	
	CODE NO.	CL242-0500-1-00	
	NO.		