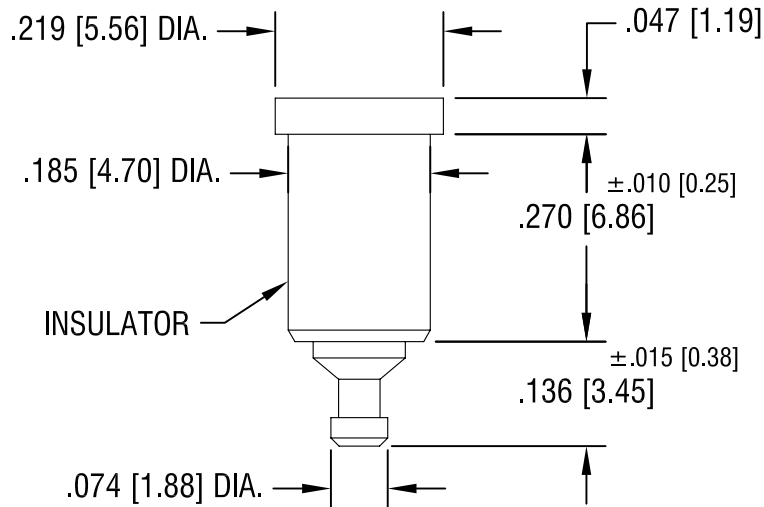
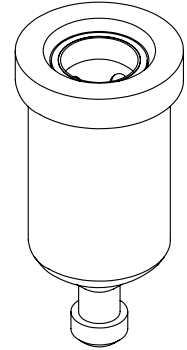
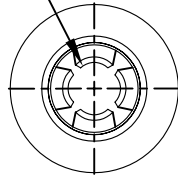


THIS DOCUMENT IS THE PROPERTY OF
KEYSTONE ELECTRONICS CORP. AND
SHALL NOT BE REPRODUCED, DISTRIBUTED
OR USED AS A BASIS FOR MANUFACTURE
WITHOUT PRIOR WRITTEN PERMISSION
FROM KEYSTONE ELECTRONICS CORP.

SPRING CONTACT TO
ACCEPT .080[2.03]
PIN DIA.



PART NO.	COLOR
11010	WHITE
11010-R	RED
11010-B	BLACK

NOTES:

1. SPRING: MAT'L - BERYLLIUM COPPER (QQ-C-533)
2. BODY: MAT'L - BRASS
3. BUSHING: MAT'L - PTFE

KEYSTONE ELECTRONICS CORP.

ASTORIA, N.Y. 11105-2017

PART NAME		PTFE INSULATED TEST JACK	
MATERIAL		AS NOTED	
FINISH		DRN BY	DATE
GOLD PLATE		N.T.	7.10.07
		APP'D	SCALE
			4X
DATE	DESCRIPTION	REV.	TOLERANCES INCH [MM]
11.17.08	CHANGE AS PER ECN 08-177	A	DECIMAL ±.005 [±0.15]
			ANGULAR ± 1°
			UNLESS OTHERWISE SPECIFIED
			CODE DWG NO.
			C/M 11010-

DATE	DESCRIPTION	REV.
11.17.08	CHANGE AS PER ECN 08-177	A