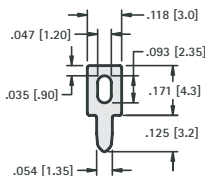
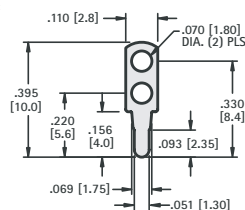


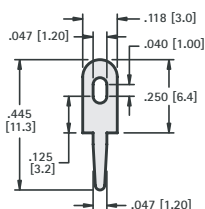
PC TEST POINTS - LOOP TYPES



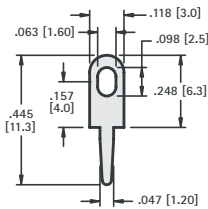
CAT. NO. 1033
MATERIAL: .025 (.64) thick Brass, Tin Plate



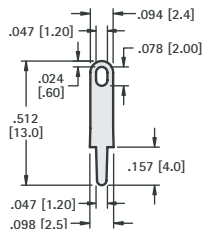
CAT. NO. 1038
MATERIAL: .020 (.51) thick Brass, Tin Plate



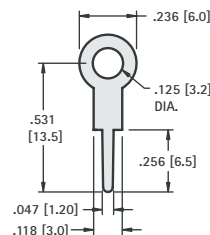
CAT. NO. 1249
MATERIAL: .025 (.64) thick Brass, Tin Plate



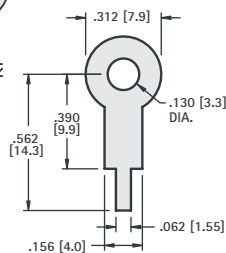
CAT. NO. 4952
MATERIAL: .025 (.64) thick Brass, Tin Plate



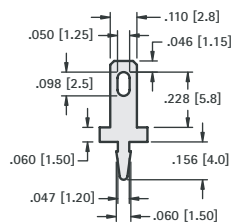
CAT. NO. 4953
MATERIAL: .020 (.51) thick Brass, Tin Plate



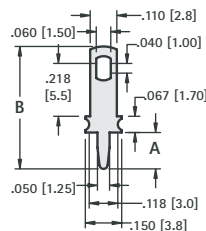
CAT. NO. 4954
MATERIAL: .020 (.51) thick Brass, Tin Plate



CAT. NO. 680
MATERIAL: .015 (.38) thick Brass, Tin Plate

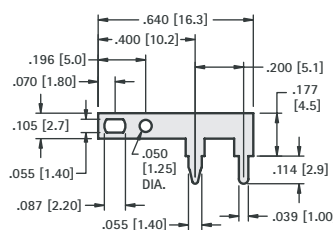
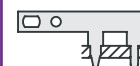


CAT. NO. 1250
MATERIAL: .020 (.51) thick Brass, Tin Plate



MATERIAL: .032 (.81) thick Brass, Tin Plate

CAT. NO.	A	B
1041	.275 (7.0)	.630 (16.0)
1046	.150 (3.8)	.503 (12.8)

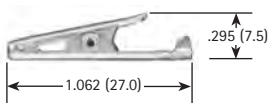


CAT. NO. 1045
MATERIAL: .025 (.64) thick Brass, Tin Plate

ALLIGATOR CLIPS

SMALL CLIP

- Solder Connection with Strain Relief
- Insulated or Non-Insulated



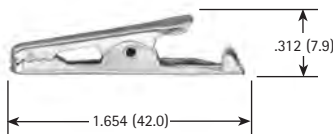
CAT. NO.	INSULATOR COLOR
5033	NONE
5034	RED
5035	BLACK
5036	GREEN
5037	YELLOW

JAW SPREAD
 .236 (6.0) max.

MATERIAL:
 Clip: Steel, Nickel Plate
 Insulator: Vinyl

MEDIUM CLIP

- Solder Connection with Strain Relief
- Insulated or Non-Insulated



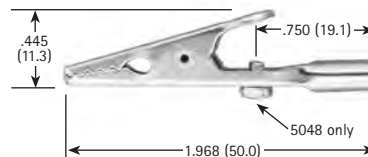
CAT. NO.	INSULATOR COLOR
5038	NONE
5039	RED
5040	BLACK

JAW SPREAD
 .236 (6.0) max.

MATERIAL:
 Clip: Steel, Nickel Plate
 Insulator: Vinyl

LARGE CLIP

- Solder Connection or Screw Connection (Barrel Accepts Wire or Standard Banana Plugs)
- Insulated or Non-Insulated



CAT. NO.	INSULATOR COLOR
5044	NONE
5045	RED
5046	BLACK
5048	SCREW INSTALLED

JAW SPREAD
 .315 (8.0) max.

MATERIAL:
 Clip: Steel, Nickel Plate
 Insulator: Vinyl