

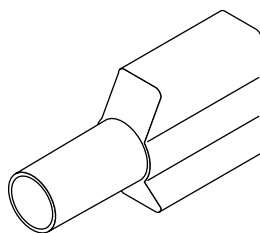
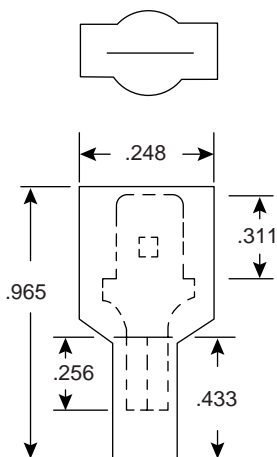
Terminals

159-3251

159-7251



Terminals



DIMENSIONS (IN.)

SPECIFICATIONS	
Maximum Electric Rating:	105°C 300 volts
Terminal Material:	Brass
Thickness:	.032 (0.8mm)
Insulation Material:	Nylon

Mouser Stock No.	Wire Range		Nema Tab (In.)	Insulated Color
	AWG	mm ²		
159-3251	22-16	1.25	.032x250	Red
159-7251	16-14	2	.032x250	Blue

Date Last Revised: 4-06-04

Available from Mouser Electronics
1-800-346-6873
www.mouser.com

KC-300023

159-3251, 159-7251