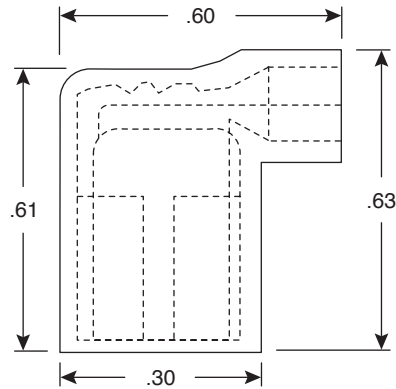
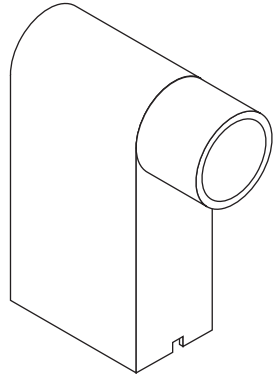


# Flag Disconnects (Female)

159-2225, 159-1625



Flag Disconnects (Female)



Dimensions: In.

SPECIFICATIONS	
Type:	insulated flag
Nema tab:	.032 x .250
Terminal material:	tin plated brass; .018" thick
Insulation material:	nylon
Max. electrical rating:	300V @ 105°C

MOUSER STOCK NO.	Color	Stud Size	Wire Size
159-2225	Red	22-16	22-16
159-1625	Blue	16-14	16-14

Date Last Revised: 6-27-05

Available from Mouser Electronics  
1-800-346-6873  
www.mouser.com

KC-300734

159-2225, 159-1625