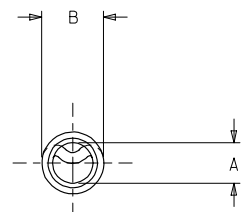
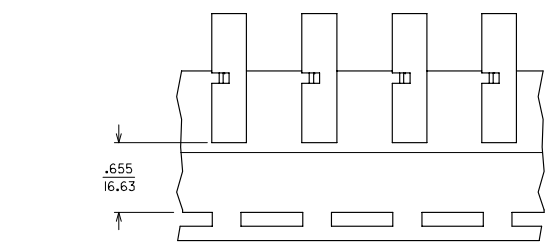
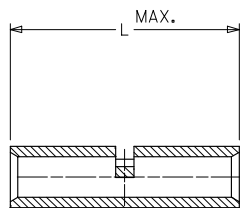


MATERIAL NUMBER	ALTERNATE NUMBER	"L" MAX	"A" MIN.	"B"	PACKAGING
192150009	AS-345	.675 (17.10)	.059 (1.50)	.130 (3.30)	LOOSE PIECE
192150007	AS-332	.605 (15.37)	.059 (1.50)	.130 (3.30)	
192150012	AS-348	.635 (16.13)	.059 (1.50)	.130 (3.30)	TAPE MOUNTED
192150011	AS-345T	.675 (17.10)	.059 (1.50)	.130 (3.30)	LOOSE PIECE
192150248	AS-345US	.675 (17.10)	.059 (1.50)	.130 (3.30)	TAPE MOUNTED



PARTS ON TAPE

CUSTOMER DRAWING

NOTES:
 1. MATERIAL: COPPER.
 2. PLATING: ELECTRO-TIN.
 3. ALL DIMENSIONS IN INCHES/(MM).

REVISED / REDRAWN EC NO: ETC2005-0116 DRAWN: JLOMASTRO 2005/03/03 CHECKED: RDEROSS 2005/03/04 APPROVED: RDEROSS 2005/03/07	QUALITY SYMBOLS	GENERAL TOLERANCES (UNLESS SPECIFIED)		DIMENSION STYLE	SCALE	DESIGN UNITS	THIRD ANGLE PROJECTION	
	$\nabla=0$ $\sphericalangle=0$	mm	INCH	IN/MM		INCH		
		4 PLACES ± --- ± ---	3 PLACES ± --- ± .005	DRAWN BY JLOMASTRO	DATE 05/01/07	TITLE BUTT CONNECTOR SEAMLESS 22-18 AWG WIRE SIZE		
		2 PLACES ± 0.13 ± .01	1 PLACE ± 0.25 ± ---	CHECKED BY RDEROSS	DATE 05/01/07	MOLEX INCORPORATED		
	ANGULAR ±1/2°	DRAFT WHERE APPLICABLE MUST REMAIN WITHIN DIMENSIONS		APPROVED BY RDEROSS	DATE 05/01/07	MATERIAL NO. SEE CHART	DOCUMENT NO. SD-19215-001	
				SIZE B	THIS DRAWING CONTAINS INFORMATION THAT IS PROPRIETARY TO MOLEX INCORPORATED AND SHOULD NOT BE USED WITHOUT WRITTEN PERMISSION			