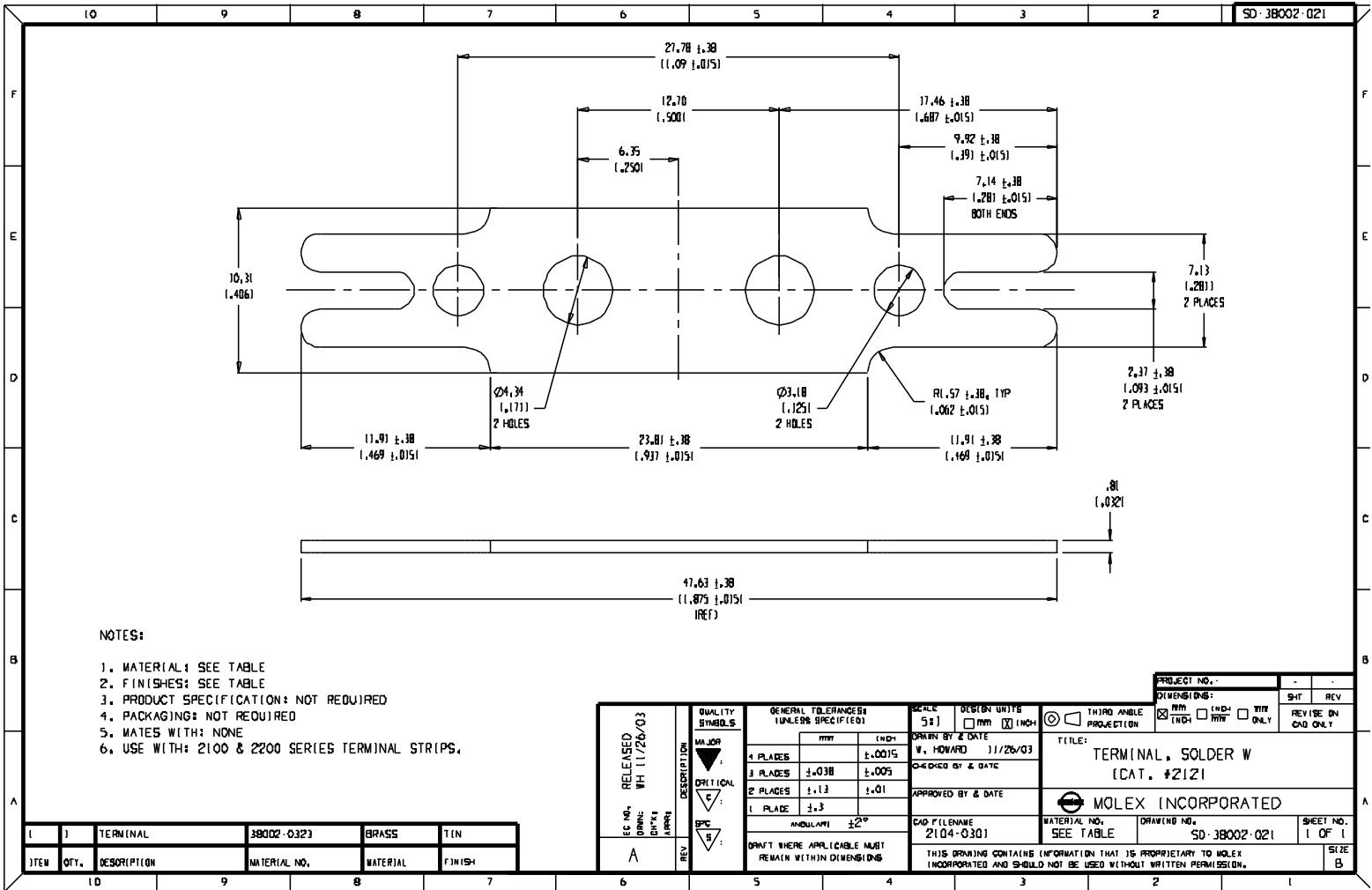


Tuesday, January 20, 2004 13:09:47



NOTES:

1. MATERIAL: SEE TABLE
2. FINISHES: SEE TABLE
3. PRODUCT SPECIFICATION: NOT REQUIRED
4. PACKAGING: NOT REQUIRED
5. MATES WITH: NONE
6. USE WITH: 2100 & 2200 SERIES TERMINAL STRIPS.

ITEM	QTY.	DESCRIPTION	MATERIAL NO.	MATERIAL	FINISH
1		TERMINAL	38002-0323	BRASS	TIN

EC NO. RELEASED 11/26/03 DRAWING DATE PART	QUALITY SYMBOLS MAJOR OPTICAL SPEC	GENERAL TOLERANCES UNLESS SPECIFIED 4 PLACES ±.038 ±.0015 3 PLACES ±.038 ±.005 2 PLACES ±.13 ±.01 1 PLACE ±.3 MODULARITY ±2° DIMTS WHERE APPLICABLE MUST REMAIN WITHIN DIMENSIONS	SCALE: 5:1 DESIGN UNIT: <input type="checkbox"/> MM <input checked="" type="checkbox"/> INCH DRAWN BY & DATE: W. HOWARD 11/26/03 CHECKED BY & DATE: APPROVED BY & DATE: CAD FILENAME: 2104-0301	THIRD ANGLE PROJECTION DIMENSIONS: <input checked="" type="checkbox"/> INCH <input type="checkbox"/> MM <input type="checkbox"/> TYP ONLY SHEET NO. 1 OF 1 REV
		PROJECT NO.: TITLE: TERMINAL, SOLDER W (CAT. #2121) MOLEX INCORPORATED MATERIAL NO. SEE TABLE DRAWING NO. SD-38002-021 SHEET NO. 1 OF 1 SIZE B		