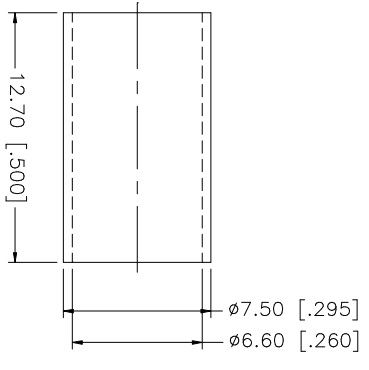
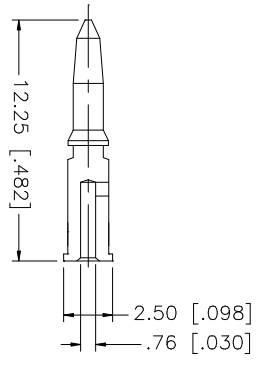
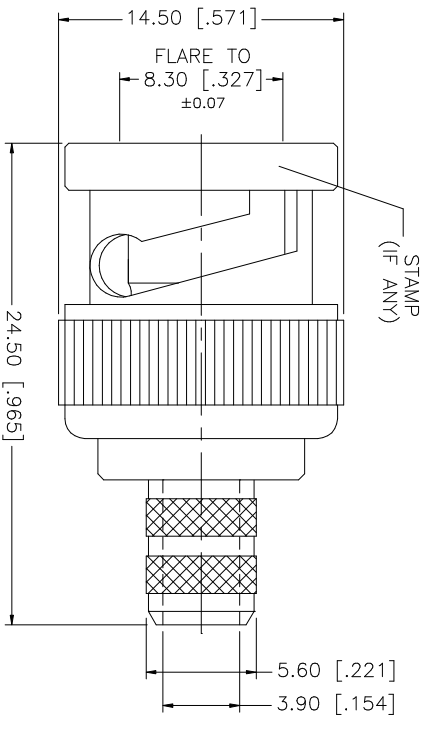
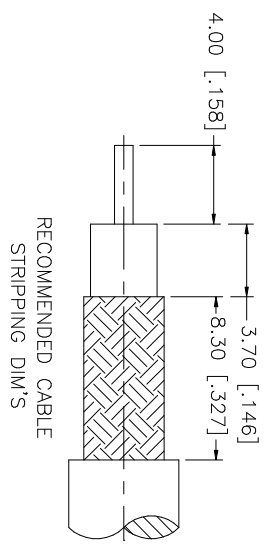


| REV. | DATE | DESCRIPTION |
|------|----------|-----------------------|
| A | 01/07/03 | UPDATE DRAWING FORMAT |



CRIMP NOTES:

1. CRIMPED FERRULE
HEX CRIMP SIZE .255"
2. CRIMPED CONTACT PIN
HEX CRIMP SIZE .068"

| QTY | FINISH | MATERIAL | DESCRIPTION |
|-----|---------|----------|---------------|
| 1 | NICKEL | COPPER | FERRULE |
| 1 | GOLD | BRASS | CONTACT PIN |
| 1 | NICKEL | BRASS | WASHER |
| 1 | NICKEL | SK5 | SPRING |
| 1 | NICKEL | BRASS | RETAINER RING |
| 1 | RED | RUBBER | GASKET |
| 1 | NATURAL | TEFLON | INSULATOR |
| 1 | NICKEL | BRASS | SHELL/BODY |
| | | | DESCRIPTION |

| APPROVALS | DATE |
|--------------|----------|
| DRAWN G.R.S. | 01/07/03 |
| CHECKED | |
| ISSUED | |

| PART NO. | PART DESCRIPTION |
|----------|---|
| 112123 | BNC CRIMP PLUG (FOR RG-59/U CABLE - 75ohm) |

| CAD FILE | DWG. NO. | REV. | SIZE | SCALE |
|-------------------|------------|------|------|-------|
| C:/112/112123.DWG | 112123.DWG | A | A | NA |

UNLESS OTHERWISE SPECIFIED DIMENSIONS ARE IN MILLIMETERS. DIMENSIONS IN [] ARE IN INCHES AND FOR CUSTOMER REFERENCE ONLY. TOLERANCES FOR MILLIMETERS ARE:
0.5 - 8mm ± 0.20mm
8 - 30mm ± 0.40mm
30 - 120mm ± 0.50mm
UNLESS OTHERWISE SPECIFIED TOLERANCES FOR INCHES ARE:
.020 - .315 = ± 0.007"
.315 - 1.180 = ± 0.015"
1.180 - 4.724 = ± 0.020"
DO NOT SCALE DRAWING

Amphenol Connex