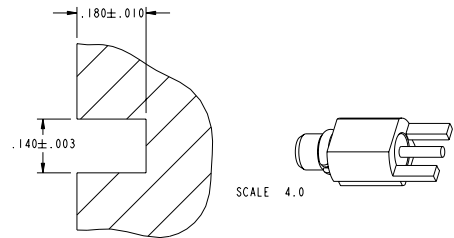
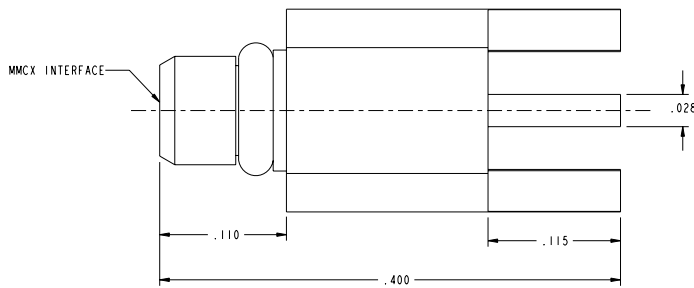


NOTES:

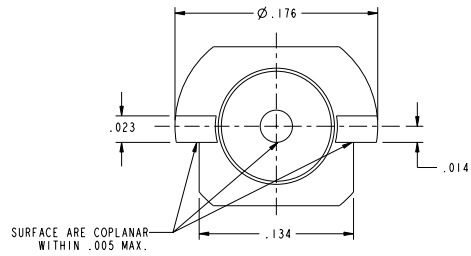
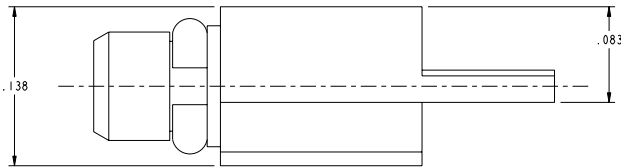
- DO NOT SCALE THIS DRAWING.
- MATERIAL AND FINISH:
 BODY: BRASS, GOLD PLATED
 CONTACT: BRASS, GOLD PLATED
 INSULATOR: PTFE
 RING: BERYLLIUM COPPER, GOLD PLATED

CUSTOMER OUTLINE DRAWING
 ALL OTHER SHEETS ARE FOR INTERNAL USE ONLY

908-21100		REVISIONS			
DRAWING NO.	REV	DESCRIPTION	DATE	ECO	APPR
THIRD ANGLE PROJ.	A		9/12/96	41538	DL/BG
	B	ADD COPLANAR REF NOTE	2/21/01	43686	CPM
	C	SEE SHEET 1	5/9/01	43757	CPM



RECOMMENDED PCB CUTOUT,
 FOR TRACE AND GEOMETRY
 (RELATED TO APPLICATION)
 CONSULT AMPHENOL



UNLESS OTHERWISE SPECIFIED, DIMENSIONS ARE IN INCHES AND TOLERANCES ARE: 2 PLACE DECIMAL ± .015 (0.381 mm) 3 PLACE DECIMAL ± .005 (0.127 mm) ANGLES ± 1° NOTICE - These drawings, specifications, or other data (1) are, and remain the property of Amphenol Corp. (2) must be returned upon request; and (3) are confidential and not to be disclosed to any person other than those to whom they are given by Amphenol Corp. The furnishing of these drawings, specifications, or other data by Amphenol Corp., or to any other person for any purpose is not to be regarded by implication or otherwise in any manner licensing, granting rights or permitting such holder or any other person to manufacture, use or sell any product, process or design, patented or otherwise, that may in any way be related to or disclosed by said drawings, specifications, or other data.	MATERIAL REFERENCE EAR 964749 0 615X-1390-100 GEN# ASSYMI_MMCX	DRAWN D. LUI	DATE 3 SEP 96	TITLE MICROMATE (MALE) PCB EDGEMOUNT	Amphenol Amphenol Corporation Communication and Network Products Division Danbury, CT U.S.A. 06810 SCALE: 12.0:1 SHEET 2 OF 2	
		ENGINEER G. TILTON	DATE 15 MAR 96			APPROVED B. GLEISSNER
		CAD FILE I:\MMCX\908-21100	CODE ID 74868	DWG SIZE B	DRAWING NO. 908-21100	REV C