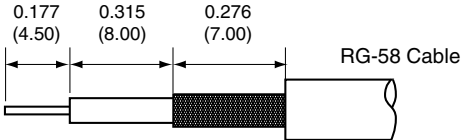
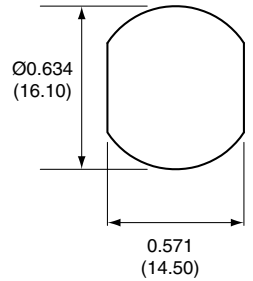


1		
Description	Material	Finish
Nut	Brass	Nickel
Washer	Brass	Nickel
Body	Brass	Nickel
Socket	Brass	Gold
Crimp Ring	Brass	Nickel
Insulation	Teflon	N/A
O Ring	SI Rubber	N/A

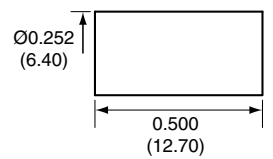
RECOMMENDED CABLE STRIPPING DIMENSIONS



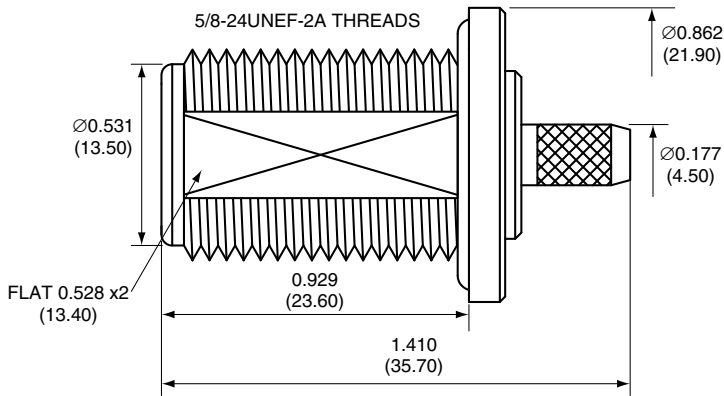
RECOMMENDED MOUNTING HOLE



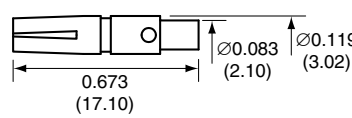
CRIMP RING



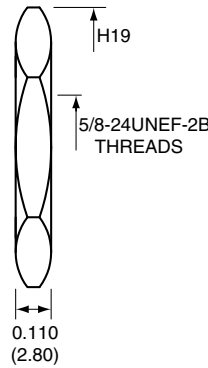
SIDE VIEW



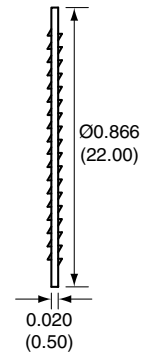
PIN



NUT



WASHER



CONN005-R58 ASSEMBLY INSTRUCTIONS

1. Solder the socket to the center conductor.
2. Insert the socket, center conductor, and insulator into the body.
3. Wrap the braid around the tail of the body and crimp the ring with a hex crimp tool labeled for use with RG-58 cable.

Title N FEMALE BULKHEAD MOUNT CABLE END CRIMP FOR RG58 CABLE		CONNECTOR CITY 159 ORT LANE MERLIN, OR 97532	
Part No. CONN005-R58	Revision: 1.0	PH (541)-471-6256	FAX (541)-471-6251
Dimensions: INCHES (mm)	Date: 2/11/2008	Sheet 1 of 1	

CONNECTOR CITY
THE VALUE OF CONNECTIONS