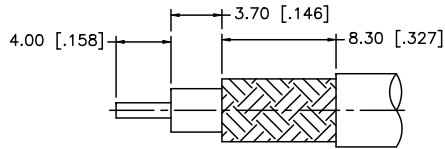
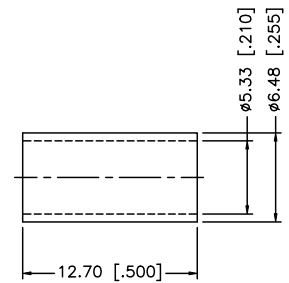
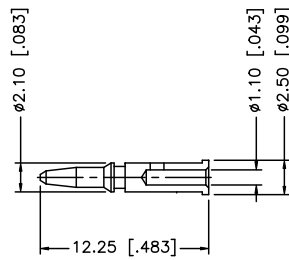
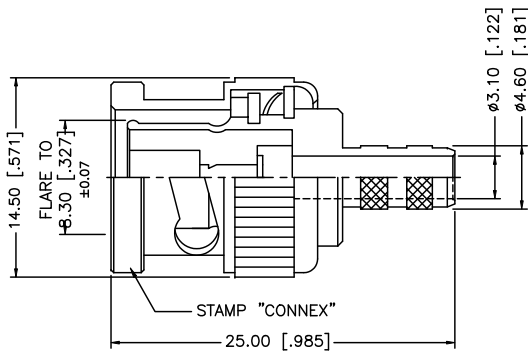


REV.	DATE	ECR NO.	DESCRIPTION
A	04/04/03	-	UPDATE DRAWING FORMAT
B	09/21/08	-	ADD COUPLING NUT TO BOM



RECOMMENDED CABLE STRIPPING DIMENSIONS



NOTES:

1. CRIMPED FERRULE HEX CRIMP SIZE .213" [5.41]
2. CRIMPED CONTACT PIN HEX CRIMP SIZE .068" [1.72]

8					UNLESS OTHERWISE SPECIFIED DIMENSIONS ARE IN MILLIMETERS. DIMENSIONS IN [] ARE IN INCHES AND FOR CUSTOMER REFERENCE ONLY.	APPROVALS	DATE	<h1 style="color: blue;">Amphenol Connex</h1>	
7					UNLESS OTHERWISE SPECIFIED TOLERANCES FOR MILLIMETERS ARE:	DRAWN	GRS		09/21/08
6					0.5 - 8mm ± 0.20mm	CHECKED			
5	FERRULE	COPPER	NICKEL	1	8 - 30mm ± 0.40mm	ISSUED			
4	CONTACT PIN	BRASS	GOLD	1	30 - 120mm ± 0.50mm	SHEET	1 OF 1		
3	INSULATOR	DELTRIN	NATURAL	1	UNLESS OTHERWISE SPECIFIED TOLERANCES FOR INCHES ARE:	CAD FILE	C:/112/112120.DWG		PART DESCRIPTION
2	COUPLING NUT	DIECAST	NICKEL	1	.020 - .315 = ± 0.007"				BNC CRIMP PLUG (FOR RG-58C/U CABLE)
1	BODY	BRASS	NICKEL	1	.315 - 1.180 = ± 0.015"				PART NO.
	DESCRIPTION	MATERIAL	FINISH	QTY	1.180 - 4.724 = ± 0.020"				112120
					DO NOT SCALE DRAWING				DWG. NO.
									112120.DWG
									REV. B
									SIZE A
									SCALE NA