

NOTES:

1. MATERIALS AND FINISHES:

CONTACT - BRASS - GOLD PLATED
 BODY - BRASS - WHITE BRONZE PLATED
 SLEEVE - BRASS - WHITE BRONZE PLATED
 OUTER CONTACT - PHOSPHOR BRONZE - WHITE BRONZE PLATED
 FERRULE - COPPER ALLOY - WHITE BRONZE PLATED
 INSULATOR - PTFE

2. PHYSICAL:

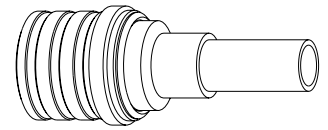
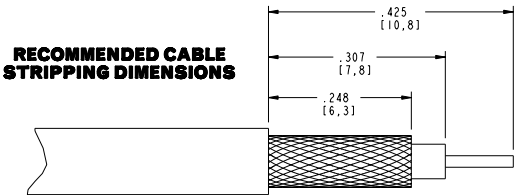
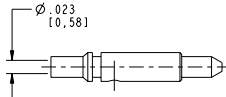
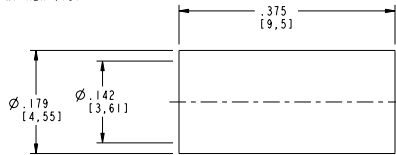
A. OPERATING TEMPERATURE = -65°C to +165°C
 B. MATING CYCLES = 100 MIN.

3. ELECTRICAL:

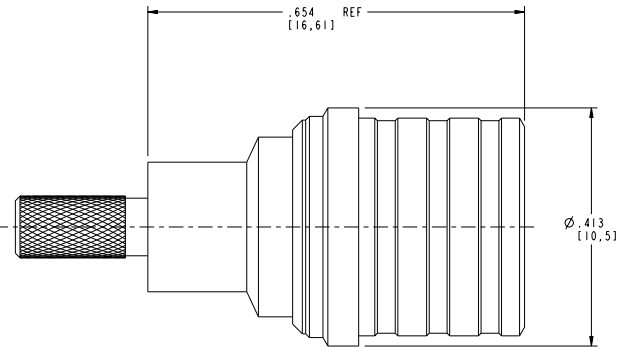
A. IMPEDENCE = 50 OHMS
 B. FREQUENCY RANGE = DC to 6 GHz
 C. VSWR = 1.05 : 1 MAX. DC-3 GHz
 = 1.12 : 1 MAX. 3-6 GHz

4. CABLE ASSEMBLY INSTRUCTIONS PER:

A. TRIM CABLE AS SHOWN
 B. CRIMP CONTACT W/ SQ. CRIMP SIZE .028, OR SOLDER
 C. INSERT CABLE UNTIL CONTACT LOCKS INTO PLACE
 D. CRIMP FERRULE W/ HEX .151



SCALE 3.000



CUSTOMER OUTLINE DRAWING

ALL OTHER SHEETS ARE FOR INTERNAL USE ONLY

UNLESS OTHERWISE SPECIFIED, DIMENSIONS ARE IN INCHES AND TOLERANCES ARE: 2 PLACE DECIMAL 3 PLACE DECIMAL ANGLES ±.015 (0.381 mm) ±.005 (0.127 mm) ± 1°	MATERIAL REFERENCE EARR 944 GEN# ASSYM3_QMA 615X-1913-100	DRAWN K. CAPOZZI	DATE 3/25/03	TITLE QMA 50 OHM PLUG FOR RD-316 CABLE	Amphenol RF Danbury, CT, USA Tainan, Taiwan Shenzhen, China www.amphenolrf.com			
		ENGINEER K. CAPOZZI	DATE 3/25/03					
NOTICE - These drawings, specifications, or other data (1) are, and remain the property of Amphenol Corp. (2) must be returned upon request; and (3) are confidential and not to be disclosed to any person other than those to whom they are given by Amphenol Corp. The furnishing of these drawings, specifications, or other data by Amphenol Corp., or to any other person for any purpose is not to be regarded by implication or otherwise in any manner licensing, granting rights or permitting such holder or any other person to manufacture, use or sell any product, process or design, patented or otherwise, that may in any way be related to or disclosed by said drawings, specifications, or other data.	APPROVED O. BARTHELME	DATE 7/16/04	CAD FILE I:\QMA\930-115P-51S	CODE ID 74868	DWG SIZE B	DRAWING NO. 930-115P-51S	SCALE: 6.0:1 SHEET 2 OF 2	REV A