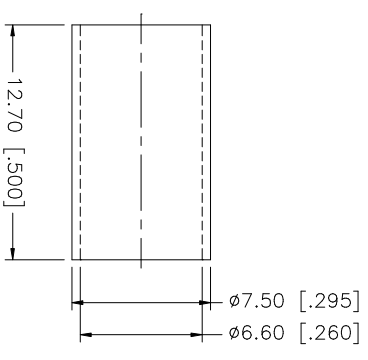
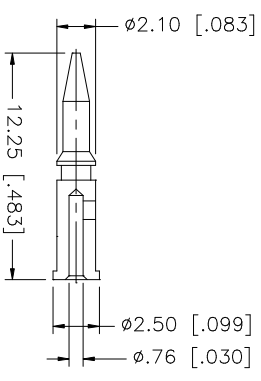
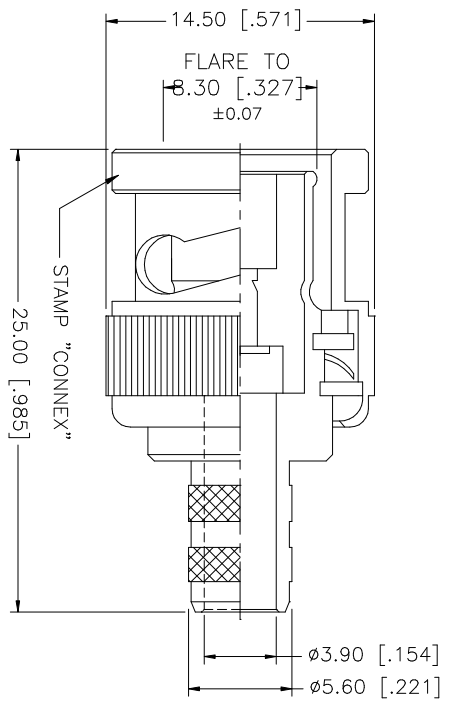
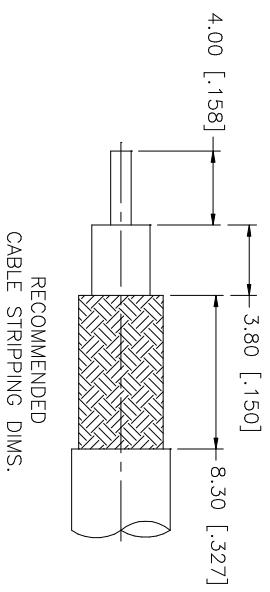


REV.	DATE	DESCRIPTION
A	11/19/03	UPDATE DRAWING FORMAT



NOTE:

1. CRIMPED FERRULE
HEX. CRIMP SIZE .255"
2. CRIMPED CONTACT PIN
HEX CRIMP SIZE .068"

UNLESS OTHERWISE SPECIFIED DIMENSIONS ARE IN MILLIMETERS. DIMENSIONS IN [] ARE IN INCHES AND FOR CUSTOMER REFERENCE ONLY.	UNLESS OTHERWISE SPECIFIED TOLERANCES FOR MILLIMETERS ARE:	UNLESS OTHERWISE SPECIFIED TOLERANCES FOR INCHES ARE:	APPROVALS	DATE	PART DESCRIPTION
8	0.5 - 8mm ± 0.20mm	.020 - .315 ± 0.007"	DRAWN	11/19/03	<p style="text-align: center;">Amphenol Connex</p> <p style="text-align: center;">BNC CRIMP PLUG (FOR RG-59C/U CABLE)</p> <p style="text-align: center;">PART NO. 112118</p>
7	8 - 30mm ± 0.40mm	.315 - 1.180 ± 0.015"	G.R.S.		
6	30 - 120mm ± 0.50mm	1.180 - 4.724 ± 0.020"	CHECKED		
5			ISSUED		
4	FERRULE COPPER	NICKEL	SHEET	1 OF 1	
3	CONTACT PIN BRASS	GOLD			
2	INSULATOR DELRIN	NATURAL			
1	BODY BRASS	NICKEL			
DESCRIPTION MATERIAL FINISH QTY			CAD FILE C:/112/112118.DWG		DWG. NO. 112118.DWG
			DO NOT SCALE DRAWING		REV. A
					SIZE A
					SCALE NA