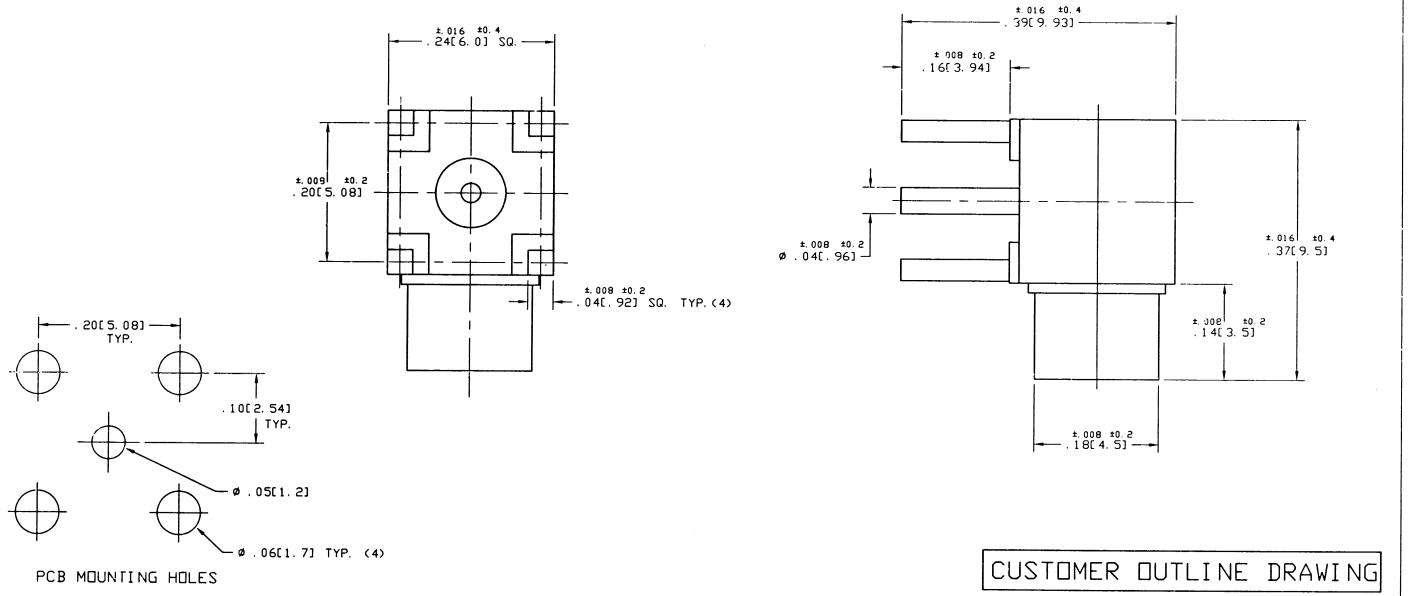


NOTES:

1. MATERIALS OF CONSTRUCTION:
 BODY, HOUSING = BRASS, GOLD PLATED.
 CONTACT PIN = BERYLLIUM COPPER, GOLD PLATED.
 INSULATORS = PTFE MIL-P-19468.
2. DO NOT SCALE THIS DRAWING.
3. UNLESS OTHERWISE SPECIFIED, ALL DIMENSIONS ARE AFTER PLATING.

919-119J-51AX		REVISIONS			
DRAWING NO.	REV.	DESCRIPTION	DATE	ECO	APPR.
THIRD ANGLE PROJ.	A	RELEASE TO MFG.			CPM/



CUSTOMER OUTLINE DRAWING

UNLESS OTHERWISE SPECIFIED, DIMENSIONS ARE IN INCHES AND TOLERANCES ARE: 2 PLACE DECIMAL 3 PLACE DECIMAL ANGLES ±.015 (0.381 mm) ±.005 (0.127 mm) ± 1°	MATERIAL	DRAWN C. McGRATH	DATE 7/19/99	TITLE	Amphenol Amphenol Corporation RF/Microwave Operations Danbury, Conn. U.S.A. 06810					
	REFERENCE EAR 967292-0	ENGINEER T. AUBIN	DATE 7/19/99	MCX R/A P. C. BOARD RECEPT. JACK						
NOTICE - These drawings, specifications, or other data (1) are, and remain the property of Amphenol Corp. (2) must be returned upon request; and (3) are confidential and not to be disclosed to any person other than those to whom they are given by Amphenol Corp. The furnishing of these drawings, specifications, or other data by Amphenol Corp., on to any other person for any purpose is not to be regarded by implication or otherwise in any manner licensing, granting rights or permitting such holder or any other person to manufacture, use or sell any product, process or design, patented or otherwise, that may in any way be related to or disclosed by said drawings, specifications, or other data.	APPROVED 	DATE 7/22/99	CAD FILE H:\PETE\MCX\912\ASSY\119J\51AX000C	CODE 1 D 74868	DWG SIZE B	DRAWING NO. 919-119J-51AX	SCALE: 1	SHEET 2	OF 2	ISSUE A