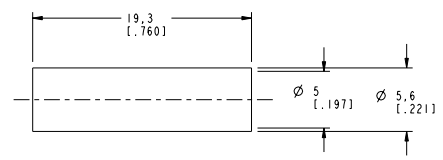
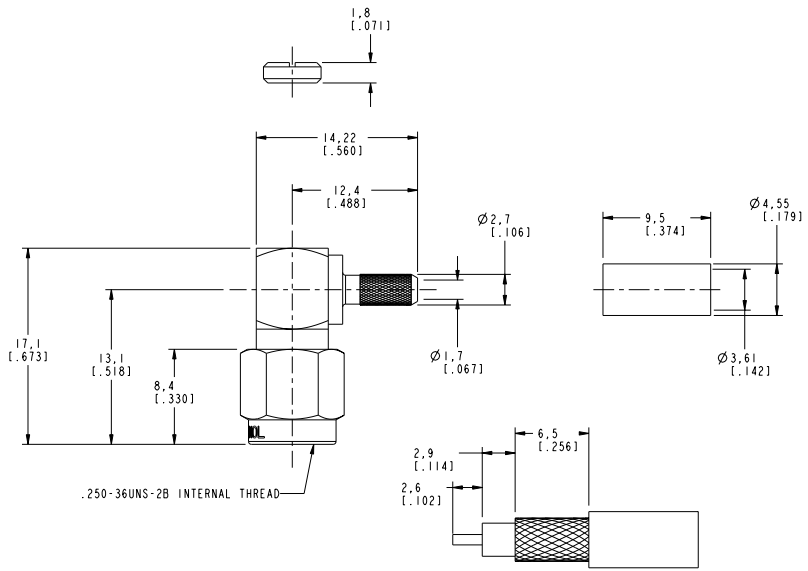
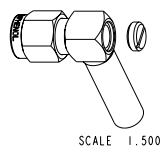


NOTES:

- MATERIALS OF CONSTRUCTION:  
 SHELL, HOUSING & COVER = BRASS, GOLD PLATED (.000003 MIN THICK)  
 CONTACT PIN = BRASS, GOLD PLATED (.000050 MIN THICK)  
 RETAINER RING = BeCu, NATURAL  
 FERRULE = COPPER, GOLD PLATED (.000003 MIN THICK)  
 INSULATOR = TEFLON, MIL-P-19468  
 GASKET = SILICONE RUBBER, COLOR RED  
 HEAT SHRINK TUBING = COLOR BLACK
- CRIMPED FERRULE = HEX CRIMP SIZE .151  
 CONTACT PINT TO SOLDER.

901-10028-RFX		REVISIONS			
DRAWING NO.	REV	DESCRIPTION	DATE	ECO	APPR
THIRD ANGLE PROJ.	B	RELEASE TO MFG.	9/14/01	43834	CPM



**CUSTOMER OUTLINE DRAWING**  
 ALL OTHER SHEETS ARE FOR INTERNAL USE ONLY

UNLESS OTHERWISE SPECIFIED, DIMENSIONS ARE IN INCHES AND TOLERANCES ARE: 0.5 - 6mm ±0.2mm 6 - 30mm ±0.4mm 30 - 120mm ±0.6mm	MATERIAL	DRAWN C. McGRATH	DATE 8/20/01	TITLE SMA R/A CRIMP PLUG (FOR RG-316U/D CABLE)	Amphenol Amphenol Corporation Communication and Network Products Division Danbury, CT U.S.A. 06810	
	REFERENCE GEN# 901-9881-RFX.ASSY	ENGINEER O. BARTHELMES	DATE 8/20/01	APPROVED O. BARTHELMES	DATE 9/14/01	SCALE: 3.0:1 SHEET 2 OF 2
NOTICE - These drawings, specifications, or other data (1) are, and remain the property of Amphenol Corp. (2) must be returned upon request; and (3) are confidential and not to be disclosed to any person other than those to whom they are given by Amphenol Corp. The furnishing of these drawings, specifications, or other data by Amphenol Corp., or to any other person for any purpose is not to be regarded by implication or otherwise in any manner licensing, granting rights or permitting such holder or any other person to manufacture, use or sell any product, process or design, patented or otherwise, that may in any way be related to or disclosed by said drawings, specifications, or other data.		CAD FILE I:\SMA\901-10028-RFX	CODE ID 74868	DWG SIZE B	DRAWING NO. 901-10028-RFX	REV B