

1. ELECTRICAL:


- A. IMPEDANCE: 50Ω (NOMINAL)
B. FREQUENCY RANGE: 0-6 GHz
C. CONTACT RESISTANCE: CENTER: 20mΩ MAX.; MEASURED AT 10mA MAX. 25 mΩ MAX AFTER CYCLING
OUTSIDE: 10mΩ MAX. 15 mΩ MAX AFTER CYCLING
D. INSULATION RESISTANCE: 500mΩ MIN.; MEASURED AT 100 VDC
E. WITHSTANDING VOLTAGE: 250 VAC OR INSULATION BREAKDOWN: 200 VAC FOR 1 MIN.
F. V.S.W.R.: 1.3 MAX. AT DC TO 3GHz, 1.4 MAX. AT 3.3 TO 6GHz

2. PHYSICAL:

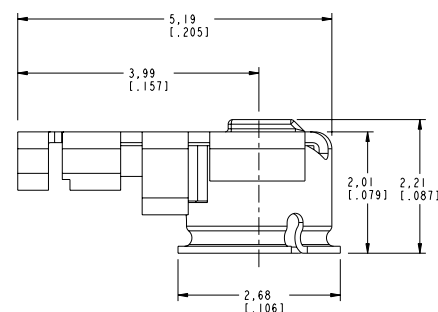
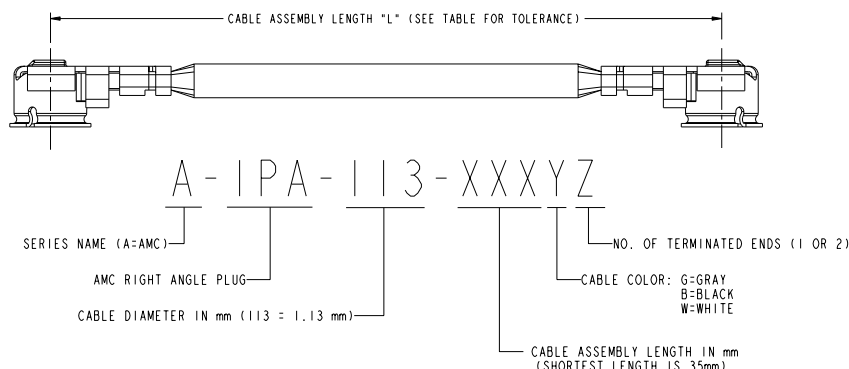
- A. FEMALE CONTACT HOLDING FORCE: .15N MIN. : MEASURED WITH A Ø.475MM PIN GAUGE.
B. DURABILITY: 30 CYCLES
C. TEMPERATURE RANGE: -40°C TO +90°C.
D. AMC CONNECTOR MATING FORCE: .15N TYPICAL
E. AMC CONNECTOR DEMATING FORCE: .10N TYPICAL
F. AMC INTERFACE IS FULLY COMPATIBLE WITH "U.F.L" SERIES PRODUCT.

3. MATERIALS AND FINISHES:

CONNECTOR BODY: PHOSPHOR BRONZE, SILVER PLATED (.08u MIN.) OVER COPPER (1-2u)
CONNECTOR CENTER CONTACT: PHOSPHOR BRONZE, GOLD PLATED (0.2u MIN.) OVER NICKEL (2-3u)
CONNECTOR INSULATOR: PBT
CABLE JACKET: FEP
CABLE DIELECTRIC: FEP
CABLE CENTER CONDUCTOR: 32AWG ANNEALED COPPER WIRE STRANDED, SILVER PLATED
CABLE OUTER CONDUCTOR: ANNEALED COPPER WIRE BRAID, SILVER PLATED

A-IPA-113-XXXXZ		REVISIONS				
DRAWING NO.	REV	DESCRIPTION	DATE	ECO	APPR	
THIRD ANGLE PROJ. 	A	RELEASE TO MFG.	2/20/03	44376	ORB	
	B	A) ADDED CABLE MATERIAL & MATE/DEMATE NOTES	3/6/03	44396	ORB	
	C	A) BODY PLATING WAS: GOLD PLATED OVER NICKEL B) NOTE 2D WAS: 25N TYPICAL	4/2/03	44402	BCG	

CABLE ASSEMBLY OVERALL LENGTH TOLERANCE	
OVERALL LENGTH L (mm)	STANDARD TOLERANCE (mm)
35 < L < 200	± 4
200 < L 500	± 8
500 < L 1000	± 12
1000 < L	± 1.5 %



AMC RIGHT ANGLE PLUG

UNLESS OTHERWISE SPECIFIED, DIMENSIONS ARE IN INCHES AND TOLERANCES ARE: 2 PLACE DECIMAL 3 PLACE DECIMAL ±.015 (0.381 mm) ±.010 (0.127 mm)				DRAWN G. ANTONINI	DATE 29-Jan-03	TITLE RIGHT ANGLE PLUG JUMPER	Amphenol Corporation Communication and Network Product Division Danbury, CT U.S.A. 06810
NOTICE: These drawings, specifications, or other data (1) are, and remain the property of Amphenol Corp. (2) must be returned upon request; and (3) are confidential and not to be disclosed to any person other than those to whom they are given by Amphenol Corp. The furnishing of these drawings, specifications, or other data by Amphenol Corp., or to any other person to anyone for any purpose is not to be regarded as authorization or otherwise in any manner licensing, granting rights or permitting such holder or any other person to manufacture, use, sell any product, process or design, patented or otherwise, that may in any way be related to or derived from the drawings, specifications, or other data.				ENGINEER G. ANTONINI	DATE 29-Jan-03		
REFERENCE GEN# CASS68				APPROVED D. BARTHELMES	DATE 2/20/03		SCALE: 8:1 SHEET 1 OF 1
CAD FILE 1:\AMCA-IPA-113-XXXXZ				CODE ID 74868	DWG SIZE A	DRAWING NO. A-IPA-113-XXXXZ	REV C