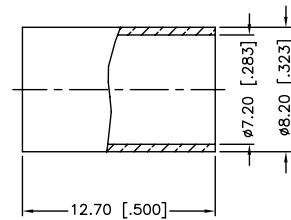
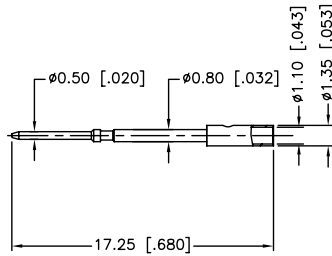
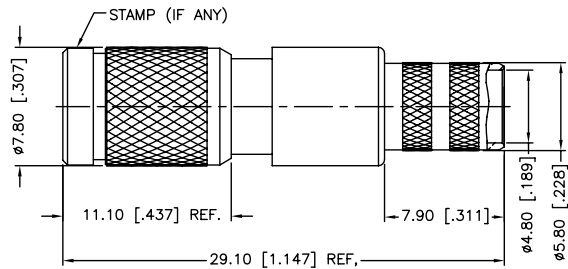
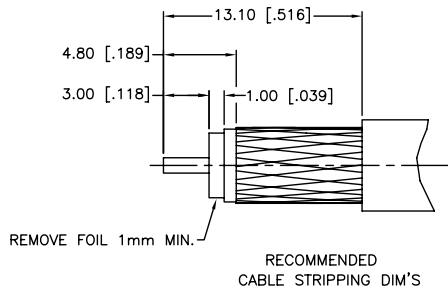


REV.	DATE	ECR NO.	DESCRIPTION
NC	09/09/10	XXXXXX	INITIAL RELEASE



- FREQUENCY RANGE: DC - 3 GHz
- VSWR (RETURN LOSS): 1.15, MAX.
- CRIMPED FERRULE
HEX CRIMP SIZE .278"
- CRIMPED CONTACT PIN
HEX CRIMP SIZE .043"

DESCRIPTION	MATERIAL	FINISH	QTY	DO NOT SCALE DRAWING	APPROVALS	DATE	<h2 style="color: blue; margin: 0;">Amphenol Connex</h2> <p style="text-align: center; margin: 0;">1.0/2.3 PUSH-PULL CRIMP PLUG (FOR BELDEN 1694A CABLE)</p>	PART NO. 282137-75	REV. NC	SIZE A	SCALE NA	
8 FERRULE	BRASS	NICKEL	1	<small>UNLESS OTHERWISE SPECIFIED DIMENSIONS ARE IN MILLIMETERS. DIMENSIONS IN [] ARE IN INCHES AND FOR CUSTOMER REFERENCE ONLY.</small> <small>UNLESS OTHERWISE SPECIFIED TOLERANCES FOR MILLIMETERS ARE:</small> 0.5 - 8mm ± 0.20mm 8 - 30mm ± 0.40mm 30 - 120mm ± 0.50mm <small>UNLESS OTHERWISE SPECIFIED TOLERANCES FOR INCHES ARE:</small> .020 - .315 ± ± 0.007" .315 - 1.180 ± ± 0.015" 1.180 - 4.724 ± ± 0.020"	DRAWN M.ZHANG	09/09/10						DWG. NO. 282137-75.DWG
7 CONTACT PIN	BRASS	GOLD	1		CHECKED							
6 BARREL	BRASS	NICKEL	1		ISSUED							
5 OUT CONTACT	BER. COPPER	GOLD	1		SHEET 1 OF 1							
4 INSULATOR	PTFE	NATURAL	1		CAD FILE	C:/CONNEX/282137-75.DWG						
3 SPRING	SUS 301H	PASSIVATED	1									
2 BODY	BRASS	NICKEL	1									
1 SHELL	BRASS	NICKEL	1									