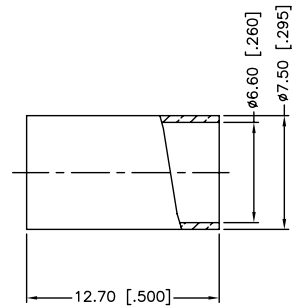
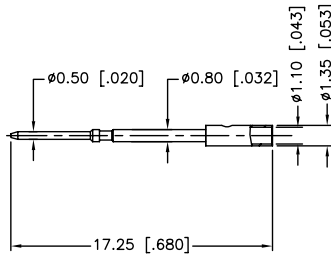
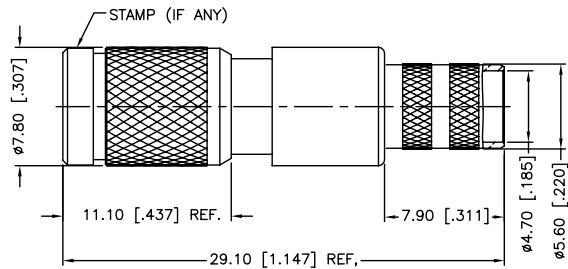
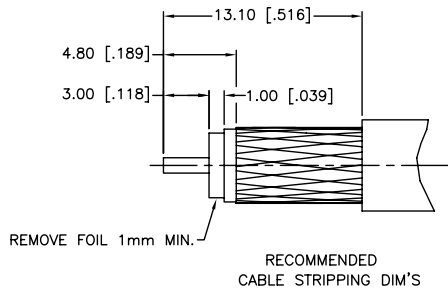


REV.	DATE	ECR NO.	DESCRIPTION
NC	04/23/10	XXXXXX	INITIAL RELEASE



- FREQUENCY RANGE: DC – 3 GHz
- VSWR (RETURN LOSS): 1.15, MAX.
- CRIMPED FERRULE
HEX CRIMP SIZE .255"
- CRIMPED CONTACT PIN
HEX CRIMP SIZE .043"

DESCRIPTION	MATERIAL	FINISH	QTY	DO NOT SCALE DRAWING	APPROVALS	DATE	<h2 style="color: blue; margin: 0;">Amphenol Connex</h2> <p style="text-align: center; margin: 0;">1.0/2.3 PUSH-PULL CRIMP PLUG (FOR BELDEN 1695A CABLE)</p>	REV.	SIZE	SCALE	
8	FERRULE	BRASS	NICKEL	1	<small>UNLESS OTHERWISE SPECIFIED DIMENSIONS ARE IN MILLIMETERS. DIMENSIONS IN [] ARE IN INCHES AND FOR CUSTOMER REFERENCE ONLY.</small> <small>UNLESS OTHERWISE SPECIFIED TOLERANCES FOR MILLIMETERS ARE:</small> 0.5 – 8mm ± 0.20mm 8 – 30mm ± 0.40mm 30 – 120mm ± 0.50mm <small>UNLESS OTHERWISE SPECIFIED TOLERANCES FOR INCHES ARE:</small> .020 – .315 ± ± 0.007" .315 – 1.180 ± ± 0.015" 1.180 – 4.724 ± ± 0.020"	04/23/10		<p style="text-align: center; margin: 0;">PART DESCRIPTION</p> <p style="text-align: center; margin: 0;">PART NO.</p> <p style="text-align: center; margin: 0;">282136-75</p>	NC	A	NA
7	CONTACT PIN	BRASS	GOLD	1		DRAWN			M.ZHANG	DWG. NO.	282136-75.DWG
6	BARREL	BRASS	NICKEL	1		CHECKED					
5	OUT CONTACT	BER. COPPER	GOLD	1		ISSUED					
4	INSULATOR	PTFE	NATURAL	1	SHEET	1 OF 1					
3	SPRING	BER. COPPER	NATURAL	1							
2	BODY	BRASS	NICKEL	1							
1	SHELL	BRASS	NICKEL	1							