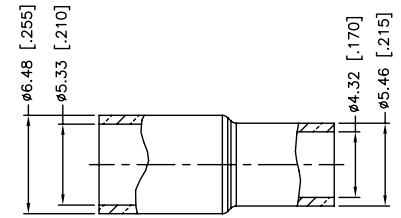
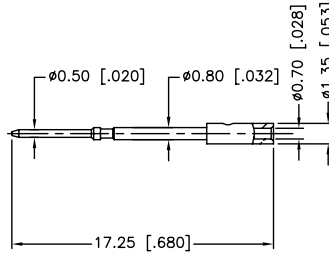
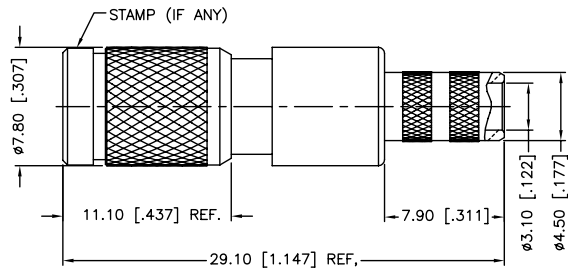
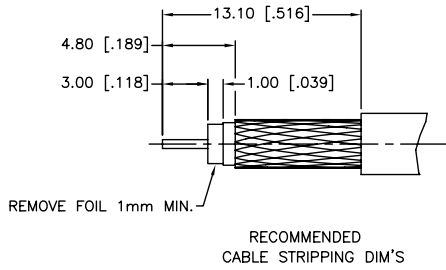


REV.	DATE	ECR NO.	DESCRIPTION
NC	09/09/10	XXXXXX	INITIAL RELEASE



1. FREQUENCY RANGE: DC - 3 GHz
2. VSWR (RETURN LOSS): 1.15, MAX.
3. CRIMPED FERRULE  
HEX CRIMP SIZE .213"
4. CRIMPED CONTACT PIN  
HEX CRIMP SIZE .043"

QTY	DESCRIPTION	MATERIAL	FINISH	QTY
1	SHELL	BRASS	NICKEL	1
2	BODY	BRASS	NICKEL	1
3	SPRING	SUS 301H	PASSIVATED	1
4	INSULATOR	PTFE	NATURAL	1
5	OUT CONTACT	BER. COPPER	GOLD	1
6	BARREL	BRASS	NICKEL	1
7	CONTACT PIN	BRASS	GOLD	1
8	FERRULE	COPPER	NICKEL	1
	DESCRIPTION	MATERIAL	FINISH	QTY

UNLESS OTHERWISE SPECIFIED DIMENSIONS ARE IN MILLIMETERS. DIMENSIONS IN [ ] ARE IN INCHES AND FOR CUSTOMER REFERENCE ONLY.		APPROVALS	DATE
UNLESS OTHERWISE SPECIFIED TOLERANCES FOR MILLIMETERS ARE: 0.5 - 8mm ± 0.20mm 8 - 30mm ± 0.40mm 30 - 120mm ± 0.50mm		DRAWN M.ZHANG	09/09/10
UNLESS OTHERWISE SPECIFIED TOLERANCES FOR INCHES ARE: .020 - .315 ± 0.007" .315 - 1.180 ± 0.015" 1.180 - 4.724 ± 0.020"		CHECKED	
		ISSUED	
		SHEET 1 OF 1	
DO NOT SCALE DRAWING		C:/CONNEX/282125-75.DWG	

<b>Amphenol Connex</b>			
PART DESCRIPTION <b>1.0/2.3 PUSH-PULL CRIMP PLUG (FOR BELDEN 1855A CABLE)</b>			
PART NO. <b>282138-75</b>			
CAD FILE	DWG. NO.	REV.	SCALE
C:/CONNEX/282125-75.DWG	282138-75.DWG	NC	A NA