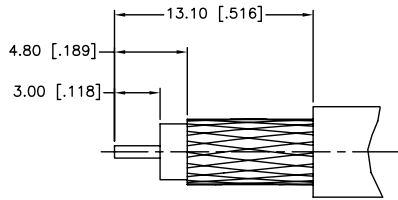
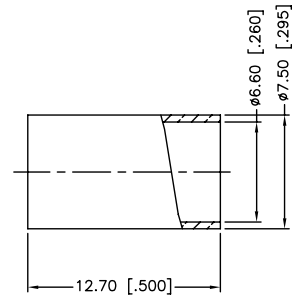
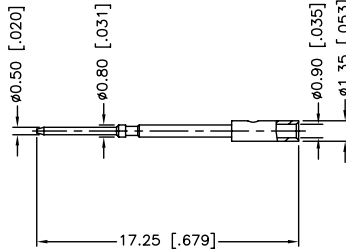
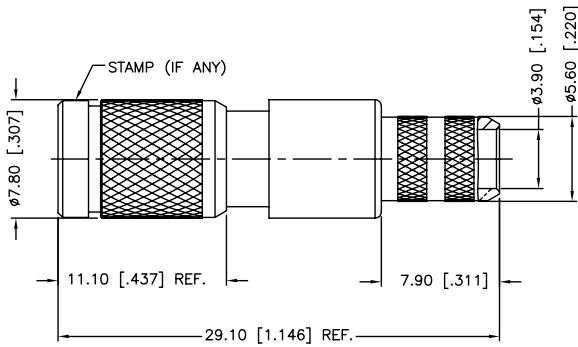


REV.	DATE	ECR NO.	DESCRIPTION
NC	09/09/10	XXXXXX	INITIAL RELEASE



RECOMMENDED
CABLE STRIPPING DIM'S



1. FREQUENCY RANGE: DC - 3 GHz
2. VSWR (RETURN LOSS): 1.15, MAX.
3. CRIMPED FERRULE
HEX CRIMP SIZE .255"
4. CRIMPED CONTACT PIN
HEX CRIMP SIZE .043"

DESCRIPTION	MATERIAL	FINISH	QTY	DO NOT SCALE DRAWING	APPROVALS	DATE	<h2 style="color: blue; margin: 0;">Amphenol Connex</h2>	1.0/2.3 PUSH-PULL CRIMP PLUG (FOR BELDEN 1505A CABLE)			
8	FERRULE	BRASS	NICKEL	1	<small>UNLESS OTHERWISE SPECIFIED DIMENSIONS ARE IN MILLIMETERS. DIMENSIONS IN [] ARE IN INCHES AND FOR CUSTOMER REFERENCE ONLY.</small> <small>UNLESS OTHERWISE SPECIFIED TOLERANCES FOR MILLIMETERS ARE:</small> 0.5 - 8mm ± 0.20mm 8 - 30mm ± 0.40mm 30 - 120mm ± 0.50mm <small>UNLESS OTHERWISE SPECIFIED TOLERANCES FOR INCHES ARE:</small> .020 - .315 ± 0.007" .315 - 1.180 ± 0.015" 1.180 - 4.724 ± 0.020"	DRAWN M.ZHANG 09/09/10			PART DESCRIPTION		
7	CONTACT PIN	BRASS	GOLD	1					CHECKED		PART NO.
6	BARREL	BRASS	NICKEL	1					ISSUED		282135-75
5	OUT CONTACT	BER. COPPER	GOLD	1			SHEET 1 OF 1				
4	INSULATOR	PTFE	NATURAL	1	CAD FILE	C:/CONNEX/282135-75.DWG	DWG. NO.	282135-75.DWG			
3	SPRING	SUS 301H	PASSIVATED	1	REV.	NC	SIZE	A			
2	BODY	BRASS	NICKEL	1	SCALE	NA					
1	SHELL	BRASS	NICKEL	1							