

Powerpole® connectors provide cost effective reliability, design flexibility and safety for your products' manufacture, installation and maintenance. Powerpoles are stackable and color-coded for easy customization into multipole blocks.

The housings are modular and genderless. Powerpole® connectors provide 600 Volts continuous AC or DC operation. With the addition of the extended range contacts, the PP Plus Connector now accepts a 1/0 wire size, increasing the amperage using the same robust housing. Wire sizes range from 1/0 to #8 AWG (53.5 to 8.4 mm²).

FEATURES

• Flat Wiping Contact System

Minimal contact resistance at high current, wiping action cleans contact surface during connection/disconnection

• Colored Modular Housings

Provides visual identification of proper mating connector

• Molded-in Dovetails

Secures individual connectors into "keyed" assemblies which prevents misconnection with similar configurations



PRODUCT SPECIFICATIONS

Connector Model	PP120	Connector Model	PP120
Current Rating (Amperes)*	230*	Life	
Voltage Ratings (AC/DC)**	600	a. No Load (mating cycles)	10,000
Contact Barrel Wire Size (AWG)	1/0 to #8	b. Under Load (Hot Plug 250 mating cycles @ 120V)	60A
(mm ²)	53.5 to 8.4	Average Connection/Disconnect (lbf)	8
Maximum Wire Insulation Diameter (inches)	0.600	(N)	36
(mm)	15.24	Operating Temperature (°C)***	-20° to 105°
Average Contact Resistance* (micro-ohms)	136	(°F)	-4° to 221°
Dielectric Withstanding Voltage (AC)	2,200	Flammability Rating of Housing Material	UL94 V-0
Contact Retention Force (lbf)	100		
(N)	445		



* UL Rated for 65°C largest wire or cable size

** Both AC & DC Voltage

*** Contact factory for higher temperature rated connectors

ORDERING INFORMATION

Housing & 120 amp Contact

Part Number	Housing Color	Wire	
		AWG	sq. mm
1320	Blue	#2	33.6
1320G1	Black	#2	33.6
1320G2	White	#2	33.6
1320G3	Red	#2	33.6
1320G4	Green	#2	33.6
1320G8	Gray	#2	33.6

120 amp Contacts

Part Number	Description	Wire	
		AWG	sq. mm
1319	Individual	#2	33.6
1319G4	Individual	#4	21.2
1319G6	Individual	#6	13.3
1323G1	Individual	#1	42.4
1323G2	Individual	1/0	53.5

Housings Only

Part Number	Description
1321	Blue housing
1321G1	Black housing
1321G2	White housing
1321G3	Red housing
1321G4	Green housing

Bushings

Part Number	Description	Wire	
		AWG	sq. mm
5919	Use with 1319	#2 to #4	33.6/21.2
5920	Use with 1319	#2 to #6	33.6/13.3
5921	Use with 1319	#2 to #8	33.6/8.4

Accessories

Part Number	Description
110G20	Retaining Pins, 2 high block of connectors
110G19	Retaining Pins, 1 high block of connectors

Tooling

Part Number	Description
1368	Hydraulic tool, 1/0 to #8
1387G1	Pneumatic tool, 1/0 to #8
1388G4	- die for #2 to #8
1389G4	- locator #2 to #8
1388G3	- die for 1/0 to #1
1389G3	- locator for 1/0 to #1

Note: For additional colors please contact customer service

HEADQUARTERS: Anderson Power Products®, 13 Pratts Junction Road, Sterling, MA01564-2305 USA T:978-422-3600 F:978-422-3700

EUROPE: Anderson Power Products® Ltd., Unit 3, Europa Court, Europa Boulevard, Westbrook, Warrington, Cheshire, WA5 7TN United Kingdom T: +44 (0) 1925 428390 F: +44 (0) 1925 520203

ASIA / PACIFIC: IDEAL Anderson Asia Pacific Ltd., Unit 922-928 Topsail Plaza, 11 On Sum Street, Shatin N.T., Hong Kong T: +(852) 2636 0836 F: +(852) 2635 9036

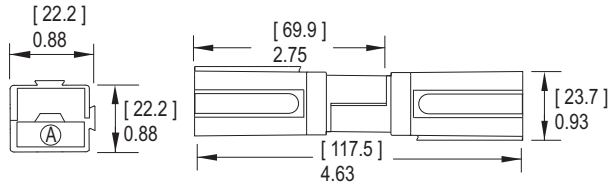
CHINA: IDEAL Anderson Technologies (Shenzhen) Ltd., Block A8 Tantou Western Industrial Park, Songgang Baoan District, Shenzhen, P.R. China 518105 T: +(86) 755 2768 2118 F: +(86) 755 2768 2218

TAIWAN: IDEAL Anderson Asia Pacific Ltd., Taiwan Branch, 4F.-2, No.116, Dadun 20th St., Situn District, Taichung City 407, Taiwan (R.O.C.) T: +(886) 4 2310 6451 F: +(886) 4 2310 6460

www.andersonpower.com

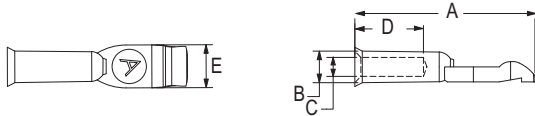
DIMENSIONS

Housing



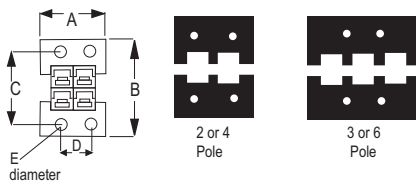
Contact

Part Number	- A -		- B -		- C -		- D -		- E -	
	mm	in.	mm	in.	mm	in.	mm	in.	mm	in.
1319	50.8	2.00	11.1	0.44	8.7	0.34	21.3	0.84	10.4	0.41
1319G4	50.8	2.00	11.1	0.44	7.5	0.30	21.3	0.84	10.4	0.41
1319G6	50.8	2.00	11.1	0.44	5.6	0.22	21.3	0.84	10.4	0.41
1323G1	50.8	2.00	11.9	0.47	9.9	0.39	21.3	0.84	10.4	0.41
1323G2	50.8	2.00	13.2	0.52	11.2	0.44	21.3	0.84	10.4	0.41



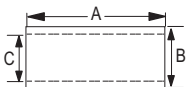
Mounting Clamps

Part Number	- A -		- B -		- C -		- D -		- E -		Number of Poles
	mm	in.	mm	in.	mm	in.	mm	in.	mm	in.	
1464G1	60.5	2.38	47.7	1.88	38.1	1.50	44.5	1.75	4.0	0.16	(2 Pole)
1464G1	60.5	2.38	70.0	2.75	60.3	2.37	44.5	1.75	4.0	0.16	(4 Pole)
1464G2	82.6	3.25	47.7	1.88	38.1	1.50	66.7	2.63	4.0	0.16	(3 Pole)
1464G2	82.6	3.25	70.0	2.75	60.3	2.37	66.7	2.63	4.0	0.16	(6 Pole)



Bushings - (for use with 1319 contacts)

Part Number	Reduces From	- A -		- B -		- C -	
		mm	in.	mm	in.	mm	in.
5919	#2 to #4 AWG	21.4	.84	8.4	.33	7.2	.29
5920	#2 to #6 AWG	21.4	.84	8.4	.33	5.8	.23
5921	#2 to #8 AWG	21.4	.84	8.4	.33	4.6	.18



TEMPERATURE RISE CHARTS

