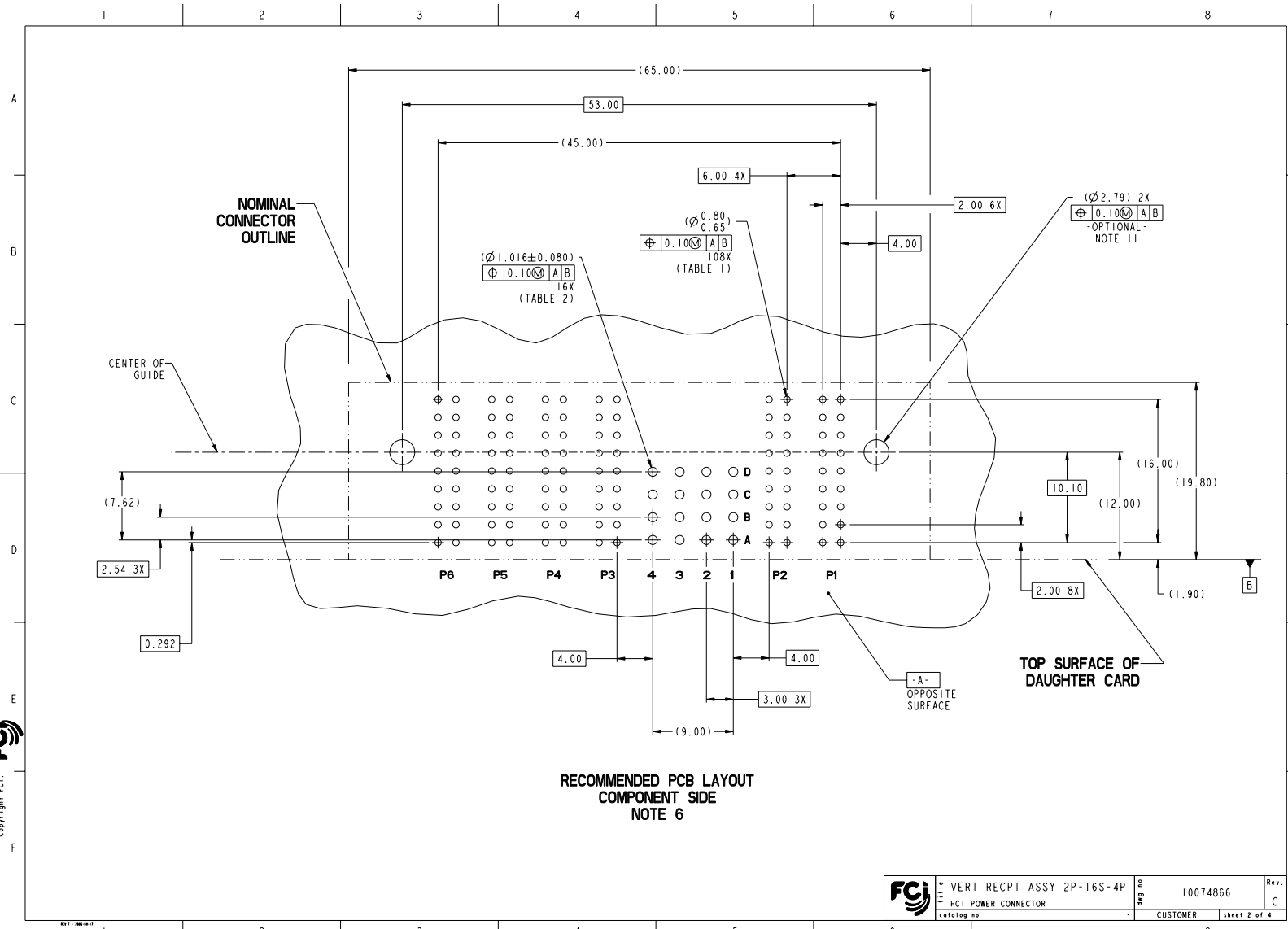


Copyright FCJ

www.fciconnect.com				surface ASME Y14.5	tolerance std ASME Y14.5	projection ASME Y14.5	MM
TOLERANCES UNLESS OTHERWISE SPECIFIED				ANGULAR	LINEAR	SIZE	Scale
rev	ecn no	dr	date	Dr	date	Product family	Product family
A	V07-0402	TH	2007-06-13	Eng	H. NGO	2007-01-08	HCI
B	V08-0053	SH	2008-02-04	Chr	H. NGO	2007-01-08	Product family
C	V08-0243	TH	2008-06-03	Appr	H. NGO	2007-01-08	HCI Spec ref
FCJ VERT RECPT ASSY 2P-16S-4P				HCI POWER CONNECTOR		10074866	Rev. C
catalog no				CUSTOMER		sheet 1 of 4	



RECOMMENDED PCB LAYOUT
COMPONENT SIDE
NOTE 6

	VERT RECPT ASSY 2P-16S-4P HCl POWER CONNECTOR <small>catalog no</small>	<small>part no</small> 10074866	<small>Rev.</small> C
	<small>CUSTOMER</small>	<small>sheet 2 of 4</small>	<small>STATUS: Released 8</small> <small>Printed: Dec 18, 2010</small>

Copyright FCJ

1 2 3 4 5 6 7 8

A

B

C

D

E

F

A

B

C

D


E

F

TOP LAYER DESCRIPTION	TABLE 1 (HCl POWER) PLATED THROUGH-HOLE REQUIREMENTS							
	DRILLED HOLE DIAMETER	COPPER THICKNESS	TIN-LEAD THICKNESS	NICKEL THICKNESS	GOLD THICKNESS	TIN THICKNESS	SILVER THICKNESS	FINISHED HOLE DIAMETER
TIN-LEAD	0.81-0.86 (0.85 DRILL)	0.025 - 0.050	0.005 - 0.015	--	--	--	--	0.65 - 0.80
IMMERSON TIN	0.81-0.86 (0.85 DRILL)	0.025 - 0.050	--	--	--	0.9 - 1.5um	--	0.70 - 0.80
IMMERSON SILVER	0.81-0.86 (0.85 DRILL)	0.025 - 0.050	--	--	--	--	0.15 - 0.65um	0.70 - 0.80
COPPER (SEE NOTE 9)	0.81-0.86 (0.85 DRILL)	0.025 - 0.050	--	--	--	--	--	0.70 - 0.80
GOLD	0.81-0.86 (0.85 DRILL)	0.025 - 0.050	--	0.003 - 0.007	FLASH UP TO 0.0002	--	--	0.69 - 0.80

TOP LAYER DESCRIPTION	TABLE 2 (HPC SIGNALS) PLATED THROUGH-HOLE REQUIREMENTS							
	DRILLED HOLE DIAMETER	COPPER THICKNESS	TIN-LEAD THICKNESS	NICKEL THICKNESS	GOLD THICKNESS	TIN THICKNESS	SILVER THICKNESS	FINISHED HOLE DIAMETER
TIN-LEAD	1.125-1.175 (\varnothing .0453 \pm .0010)	0.025-0.050	0.005-0.015	--	--	--	--	0.94 - 1.10 (\varnothing .040 \pm .003)
IMMERSON TIN			--	--	--	--	--	
IMMERSON SILVER			--	--	--	--	--	
COPPER (SEE NOTE 9)			--	--	--	--	--	
GOLD			--			--	--	

Copyright FCI
FCI

	VERT RECPT ASSY 2P-16S-4P HCl POWER CONNECTOR <small>catalog no</small>	<small>part no</small> 10074866	<small>Rev.</small> C
	<small>CUSTOMER</small>		<small>sheet 3 of 4</small>

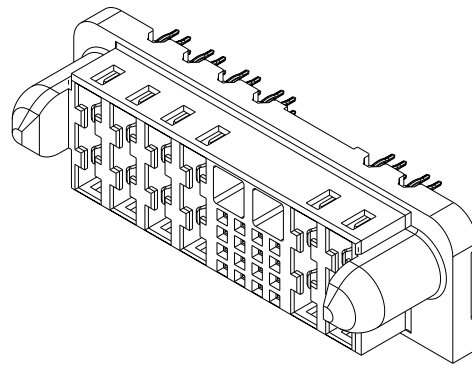
PDM: Rev:C STATUS:Released 8 Printed: Dec 18, 2010

1 2 3 4 5 6

PART NUMBER	M2.5 SCREW NOTE 11	TAIL PLATING	TAIL TYPE
10074866-001	OPTIONAL	SnPb	PRESS-FIT
10074866-001LF	OPTIONAL	Sn	PRESS-FIT

NOTES:

1. CONNECTOR MATERIALS:
HOUSING: HIGH TEMPERATURE THERMOPLASTIC, BLACK
UL 94V-0 COMPLIANT
CONTACTS: HIGH PERFORMANCE COPPER ALLOY
2. CONTACT FINISH(ref. GS-12-380 SECTION 5.2)
3. PRODUCT SPECIFICATION: GS-12-380.
4. APPLICATION SPECIFICATION: GS-20-070.
5. PRODUCT MARKING (PRODUCT NUMBER & DATE CODE) ON HOUSING IN AREA SHOWN.
6. MINIMUM NOMINAL PCB THICKNESS: 1.6mm
7. PACKAGING MEETS FCI SPECIFICATION GS-14-1073.
8. HOUSING COMPONENT WILL WITHSTAND EXPOSURE TO 260°C PEAK TEMPERATURE FOR 60 SECONDS IN A CONVECTION, INFRA-RED, OR VAPOR PHASE REFLOW OVEN.
9. COPPER PLATING THICKNESS IN CENTER OF VIA-HOLE CAN BE NO MORE THAN 0.003 LESS THAN OTHER AREAS.
10. ALL HOLE SIZES ARE FINISHED HOLE SIZES.
11. RECOMMENDED RETENTION TO PCB.
 $\varnothing 0.110[2.79]$ THRU HOLE (UNPLATED) FOR M2.5 SELF THREADING SCREW, MAX HEAD $\varnothing 0.177[4.50]$.
 RECOMMENDED SCREW LENGTH $0.276[7.00] +$ PCB THICKNESS.
 RECOMMENDED SCREW SEATING TO PCB TORQUE: 2-5 lbf-in (2300-5760 gf-cm).



FCI	VERT RECPT ASSY 2P-16S-4P	org no	10074866	Rev.
	HCI POWER CONNECTOR	CUSTOMER		C
drawing no		PDM: Rev:C		STATUS: Released 8