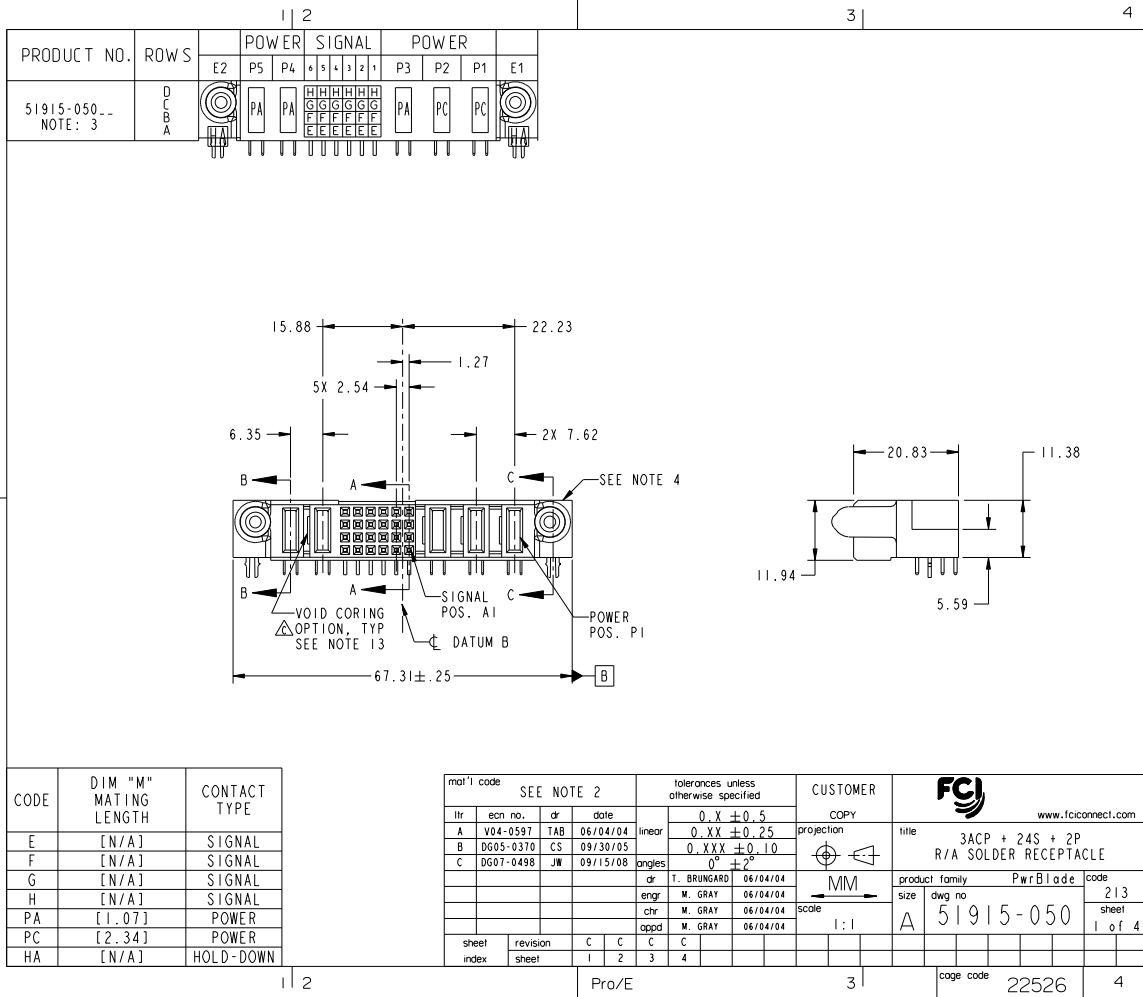


Tous droits strictement réservés. Reproduction ou communication à des tiers interdite sous quelque forme que ce soit sans autorisation écrite du propriétaire. Propriété de c FCI. Droits de reproduction FCI.



All rights strictly reserved. Reproduction or issue to third parties in any form whatever is not permitted without written authority from the proprietor. Property of FCI. Copyright FCI.



PDM: Rev:C

STATUS:Released

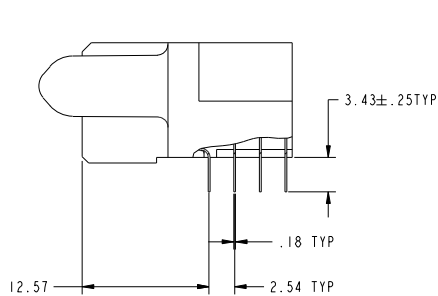
Printed: Dec 20, 2010

Tous droits strictement réservés. Reproduction ou communication à des tiers interdite sous quelque forme que ce soit sans autorisation écrite du propriétaire. Propriété de c FCI. Droits de reproduction FCI.

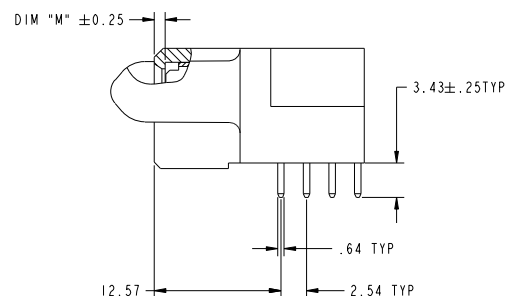


All rights strictly reserved. Reproduction or issue to third parties in any form whatever is not permitted without written authority from the proprietor. Property of FCI. Copyright FCI.

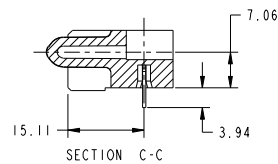
PRODUCT NUMBER
51915-050-
NOTE: 3



BROKEN-OUT SECTION A-A
SCALE 2:1



BROKEN-OUT SECTION B-B
SCALE 2:1



SECTION C-C

mat'l code				tolerances unless otherwise specified		CUSTOMER		FCI	
litr	ecn no.	dr	date	linear	0.X ±0.5	COPY		www.fciconnect.com	
C				linear	0.XX ±0.25	projection		3ACP + 24S + 2P	
				angles	0.XXX ±0.10			R/A SOLDER RECEPTACLE	
				dr	0° ±2°			PwrBlade	
				engr	T. BRUNARD 06/04/04	MM		product family	
				chr	M. GRAY 06/04/04	scale		size	
				appd	M. GRAY 06/04/04	1:1		A 51915-050	
sheet index	revision sheet							code	
								213	
								sheet	
								2	

Pro/E

cage code 22526

PDM: Rev:C

STATUS:Released

Printed: Dec 20, 2010



— All rights reserved.

DIM XXX
 SEE NOTE 10

34.04 SEE NOTE 11

15.88

22.23

1.27

5X 2.54

2X 7.62

6.35

3X 2.54 TYP

SEE NOTE 11
 3 SIDES

15.49
 SEE NOTE 11

2X 6.35

PCB EDGE

3.81 TYP

1.27 TYP

2.54 TYP

1.27 TYP

2.54 TYP

PCB LAYOUT
 AND DATUM B ϕ

59.69

68.07 SEE NOTE 11

$\phi 2.49 \pm .07$
 SEE NOTE 8


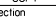

$\phi .10$ X Y Z

Z

Y

$\phi 1.02 \pm .07$
 SEE NOTE 9

$\phi .10$ X Y Z

mat'l code				SEE NOTE 2				tolerances unless otherwise specified				CUSTOMER		 www.fciconnect.com					
lfr	ecn no.	d'	date	linear	0.X ± 0.5				projection		title	3ACP + 24S + 2P							
C					0.XX ± 0.25							R/A SOLDER RECEPTACLE							
					0.XXX ± 0.10														
					0'' ± 2''														
					angles														
					1. BRUNGRAD 06/04/04					product family	PwrBlade	code	213						
				d. GRAY 06/04/04				size							dwg no.	51915-050	sheet		
				engr. M. GRAY 06/04/04															
				oppd. M. GRAY 06/04/04															
sheet index		revision sheet										code code		22526		4			
				Pro/E				3											

STATUS:Released

Printed: Dec 20, 2010

All rights strictly reserved. Reproduction or issue to third parties in any form whatever is not permitted without written authority from the proprietor. Property of FCI. Copyright FCI.

△13. THE VOID CORING IN BETWEEN POWER MODULES, SIGNAL MODULES AND END MODULES ARE OPTIONAL AND THE SHAPE MAY BE DIFFERENT FOR OPTIMIZING THE MOLDING PROCESS THE VOID CORING WILL NOT EFFECT TO PRODUCT FUNCTION.

[illegible]

Pro/E

coge code	22526
-----------	-------

Printed: Dec 20, 2010