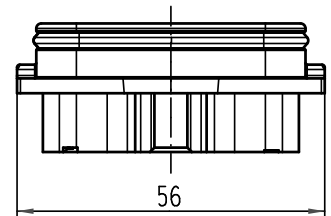
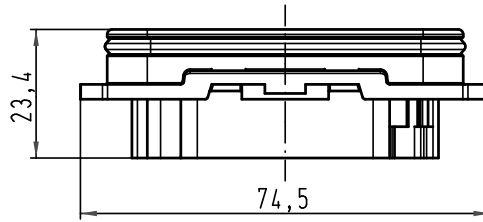
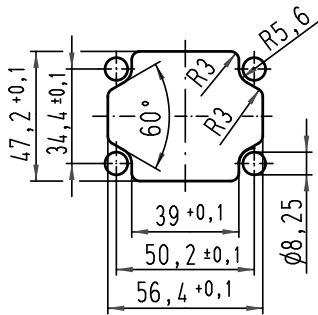
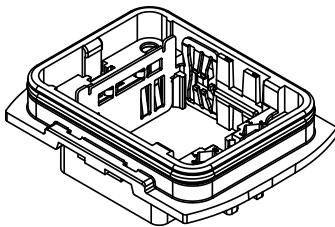


Alle Rechte vorbehalten/ All rights reserved

Montageausschnitt/
panel cut out
(1:2)



Lieferumfang: Anbaugeschütz mit Flachdichtung und Wanddübeln/
range of delivery: housing bulkhead mounting with gasket and wall-plugs



All Dimensions in mm Original Size DIN A 4		Techn. Character.			Nicht tolerierte Maß/Free size tolerances		
			Dat.	Name	Maßstab/Scale 1:1	Han-Yellock 30- Anbaugeschütz/ housing bulkhead mounting	
			Detail.	28.04.10			Ho
			Insp.				SP
			Stand.				
A			HARTING Electric GmbH & Co. KG			TB 11 12 300 0302 Sub.	
Mod.	Dat.	Name	D-32339 Espelkamp				
						Blatt/page	