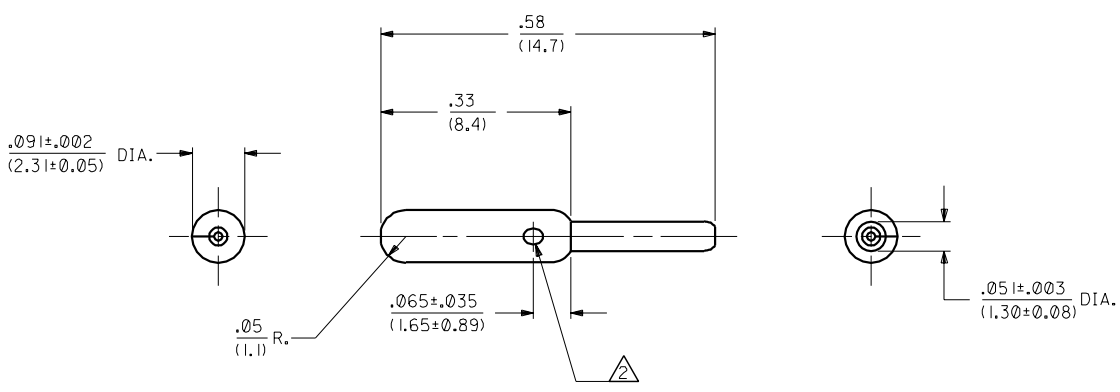


10 9 8 7 6 1840 4 3 2 1840



B1	REVISE PER UCR 1998-0114 WANG 98-03-31		
B	REVISE PER ECR US 0593 CXC 94/12/16 RW		
2	BI	A	REV'D. AND REDRAWN ECR U1 2301 CXC 1/3/92 RW
1	BI		

MFG.	SH.	REV.	LTR.	REVISIONS

DIMENSIONS SHOWN (METRIC) INCH  
 UNLESS OTHERWISE SPECIFIED  
 TOLERANCES: ANGULAR ± 1/2°

	INCH	METRIC
3 PLACE	± .010	---
2 PLACE	± .014	± 0.25
1 PLACE	---	± 0.36

DRAFT WHERE APPLICABLE MUST  
 REMAIN WITHIN DIMENSIONS

TITLE: TERMINAL, PIN  
 P.C. TAIL, FOR .093  
 SERIES HEADERS

**MOLEX INCORPORATED** SHEET NO. DATE  
 LITTLE, ILL. 60532 U.S.A. 1 of 2 1/3/92

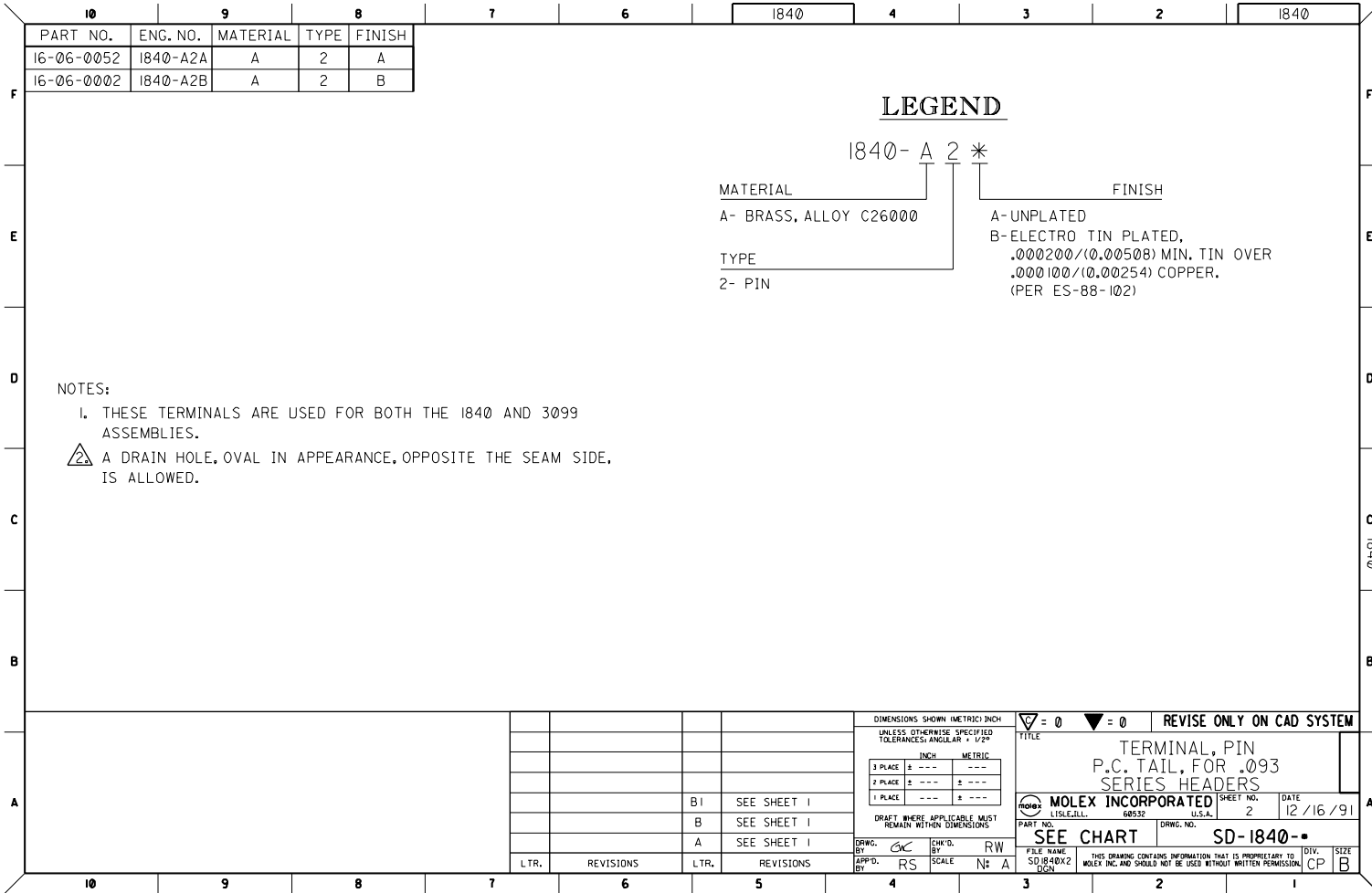
FPART NO. DRWG. NO.  
**SEE CHART SD-1840-\***

DRWG. BY: CXC CHK'D. BY: RW  
 APP'D. BY: RS SCALE: 6:1

THIS DRAWING CONTAINS INFORMATION THAT IS PROPRIETARY TO  
 MOLEX INC. AND SHOULD NOT BE USED WITHOUT WRITTEN PERMISSION.

DIV. SIZE  
 CP B

10 9 8 7 6 5 4 3 2 1



PART NO.	ENG. NO.	MATERIAL	TYPE	FINISH
16-06-0052	1840-A2A	A	2	A
16-06-0002	1840-A2B	A	2	B

### LEGEND

1840- A 2 \*

MATERIAL  
A- BRASS, ALLOY C26000

TYPE  
2- PIN

FINISH  
A- UNPLATED  
B- ELECTRO TIN PLATED,  
.000200/(0.00508) MIN. TIN OVER  
.000100/(0.00254) COPPER.  
(PER ES-88-102)

**NOTES:**

1. THESE TERMINALS ARE USED FOR BOTH THE 1840 AND 3099 ASSEMBLIES.

 A DRAIN HOLE, OVAL IN APPEARANCE, OPPOSITE THE SEAM SIDE, IS ALLOWED.

DIMENSIONS SHOWN (METRIC) INCH

UNLESS OTHERWISE SPECIFIED TOLERANCES: ANGULAR = 1/2°

	INCH	METRIC
3 PLACE	± .001	± .025
2 PLACE	± .005	± .127
1 PLACE	± .015	± .381

DRAFT, WHERE APPLICABLE, MUST REMAIN WITHOUT DIMENSIONS

▽ = 0 ▼ = 0 REVISE ONLY ON CAD SYSTEM

TITLE  
TERMINAL, PIN  
P.C. TAIL, FOR .093  
SERIES HEADERS

MOLEX INCORPORATED	SHEET NO. 2	DATE 12/16/91
1151EJLL	68032	U.S.A.

SEE CHART SD-1840-\*

THIS DRAWING CONTAINS INFORMATION THAT IS PROPRIETARY TO MOLEX INC. AND SHOULD NOT BE USED WITHOUT WRITTEN PERMISSION

DRWG. BY	CHK'D. BY	SCALE	N: A
APP'D. BY	RS	RS	RS
LTR.	REVISIONS	LTR.	REVISIONS