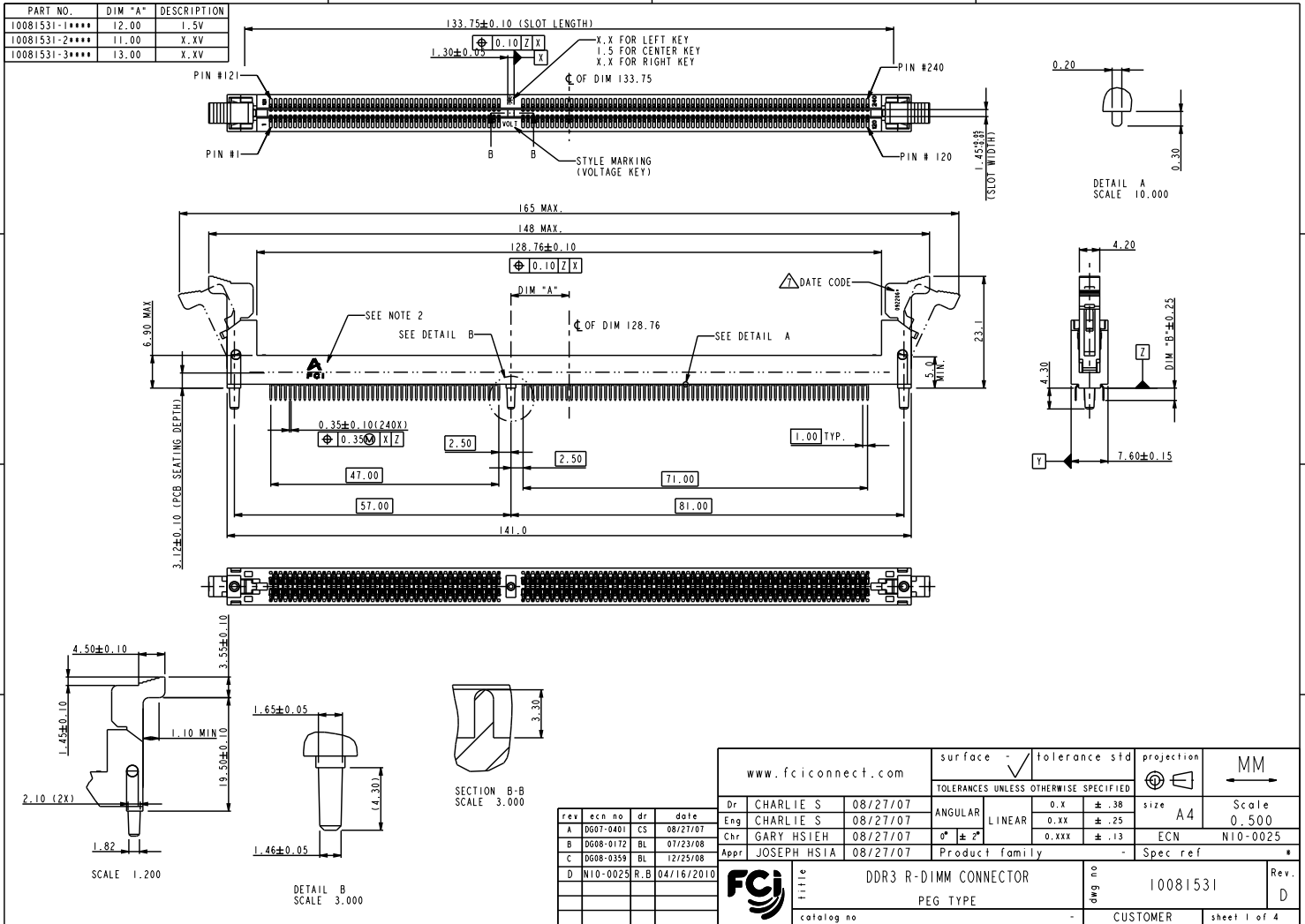


PART NO.	DIM "A"	DESCRIPTION
10081531-1****	12.00	I.5V
10081531-2****	11.00	X.XV
10081531-3****	13.00	X.XV

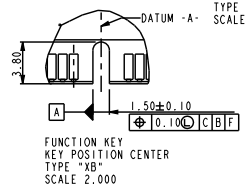
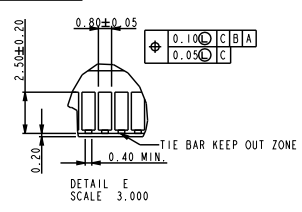
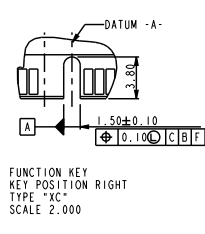
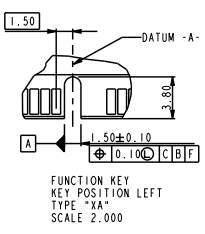
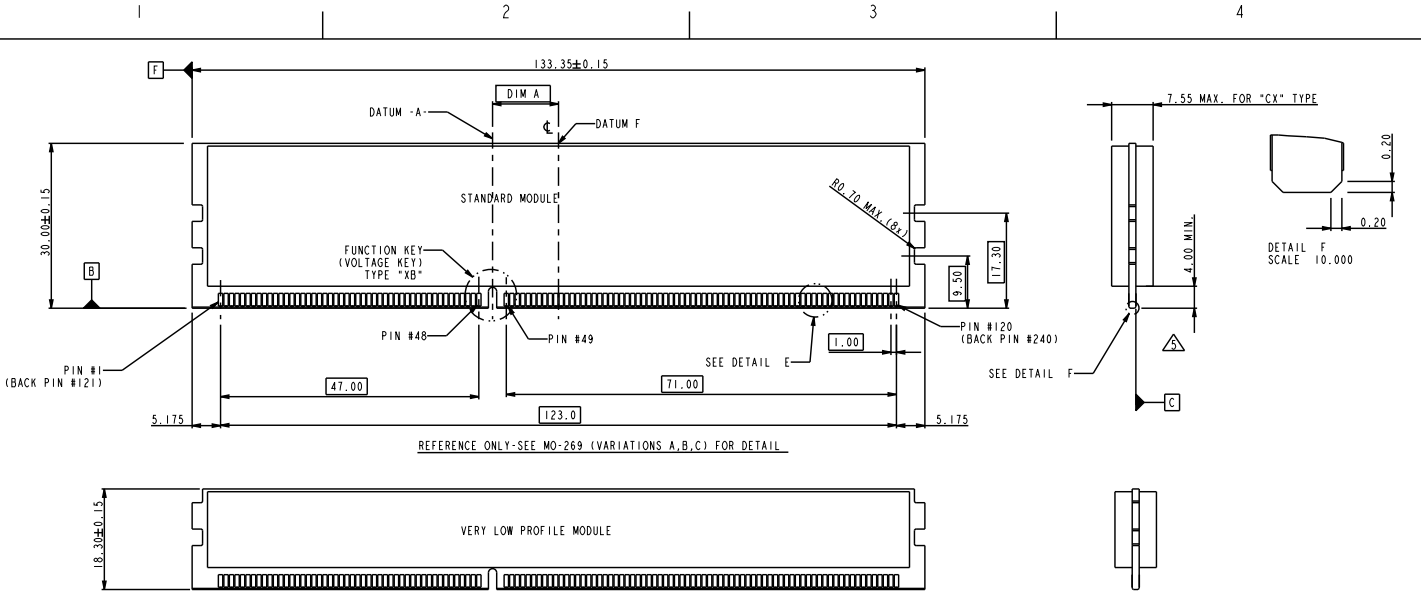


Copyright FCI.

REV	ECN NO.	DR	DATE
A	0607-0401	CS	08/27/07
B	0608-0172	RL	07/23/08
C	0608-0359	RL	12/25/08
D	N10-0025	R.B	04/16/2010

www.fciconnect.com		surface	tolerance std	projection	MM
Dr CHARLIE S 08/27/07		ANGULAR	TOLERANCES UNLESS OTHERWISE SPECIFIED		Scale 0.500
Eng CHARLIE S 08/27/07		LINEAR	0.x ± .38	size A4	ECN N10-0025
Chr GARY HSIEH 08/27/07		0° ± 2°	0.xx ± .25		
Appr JOSEPH HSIA 08/27/07		Product family	0.xxx ± .13	Spec ref	
FCI		Title DDR3 R-DIMM CONNECTOR		dwg no 10081531	Rev. D
catalog no		PEG TYPE		CUSTOMER	sheet 1 of 4

PDM: Rev:D STATUS:Released 4 Printed: Sep 14, 2010



TYPE	DESCRIPTION
TYPE "XA"	X, X VOLTAGE
TYPE "XC"	X, X VOLTAGE
TYPE "XB"	1.5 VOLTAGE
SUB KEY POS #1	DESCRIPTION

tolerance unless otherwise specified	
linear	.X ± .38
	.XX ± .25
	.XXX ± .13
angles	0° ± 2°

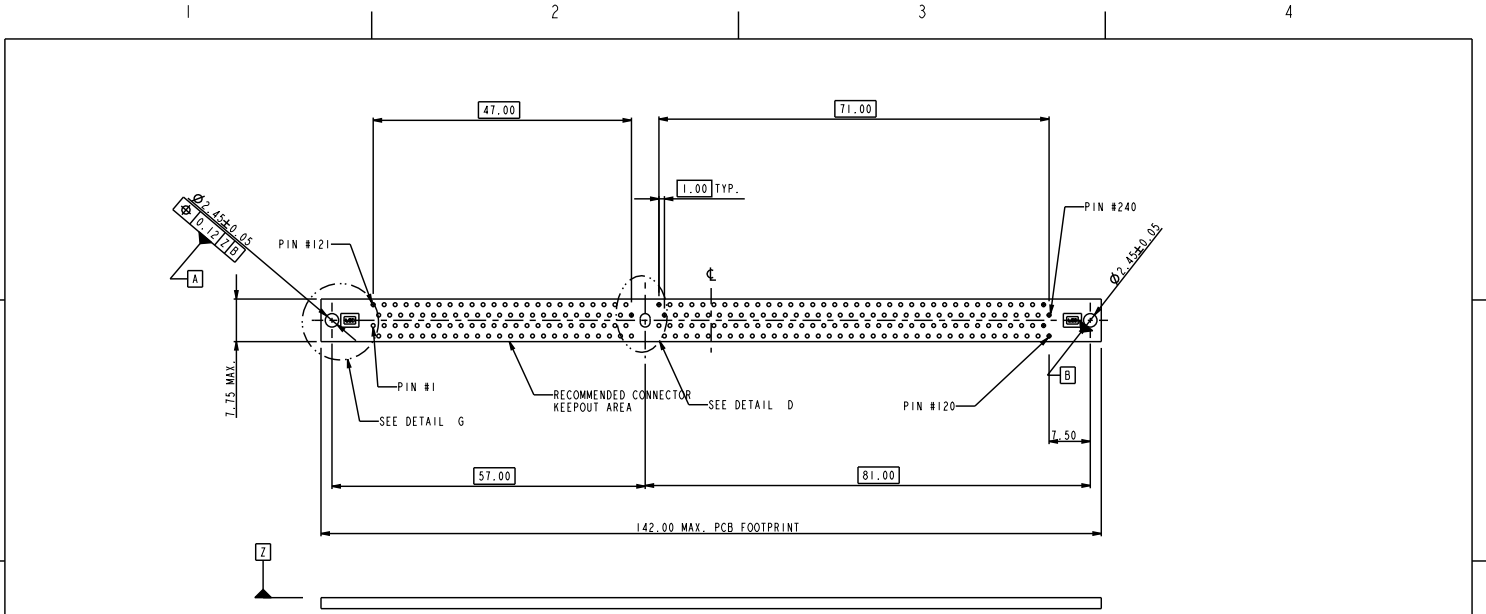
	FCJ title catalog no	DDR3 R-DIMM CONNECTOR PEG TYPE	dwg no 10081531	Rev. D
	CUSTOMER		sheet 2 of 4	

PDM: Rev:D STATUS:Released⁴ Printed: Sep 14, 2010

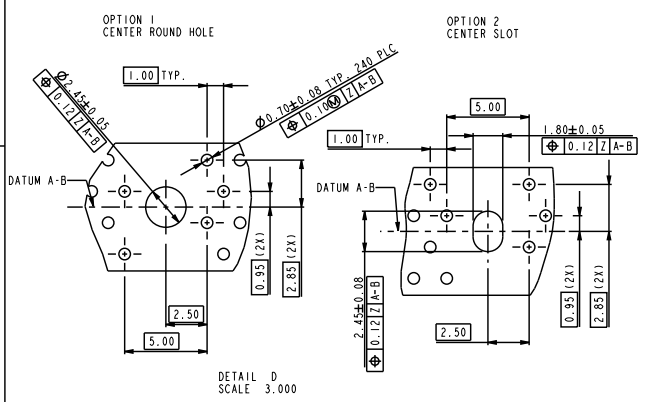
Copyright FCJ.



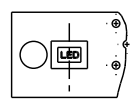
Copyright FCI.



RECOMMENDED CIRCUIT BOARD HOLE LAYOUT



DETAIL D SCALE 3.000



DETAIL G SCALE 2.000

tolerance unless otherwise specified	
linear	.X ± .38
	.XX ± .25
	.XXX ± .13
angles	0° ± 2°

	title	DDR3 R-DIMM CONNECTOR	dwg no	10081531	Rev.	D
	catalog no	PEG TYPE	CUSTOMER	sheet 3 of 4		

PDM: Rev:D STATUS:Released 4 Printed: Sep 14, 2010

REV F - 2004-04-17



Copyright FCI.

1 2 3 4

A

B

C

D

10081531 - □ □ □ □

STYLE : MECHANICAL KEYING
1 : 1.5 VOLT. W/ CENTER KEY "XB"
2 : X.X VOLT. W/ LEFT KEY "XA"
3 : X.X VOLT. W/ RIGHT KEY "XC"

PLASTIC PEG LENGTH
1 : 4.30

TAIL LENGTH

CODE	DIM "B"
1	2.67
2	3.18

PLATING

CODE	CONTACT	SOLDERTAIL	UNDERPLATE
2	15u" (0.38um) MIN. GOLD	100u" (2.54um) MIN. TIN/LEAD	50u" (1.27um) MIN. NICKEL OVERALL
3	30u" (0.76um) MIN. GOLD		
4	3u" (0.07um) MIN. GOLD		
7LF	15u" (0.38um) MIN. GOLD	100u" (2.54um) MIN. 100% TIN	50u" (1.27um) MIN. NICKEL OVERALL
8LF	30u" (0.76um) MIN. GOLD		
9LF	3u" (0.07um) MIN. GOLD		

COLOR OF HOUSING AND EJECTOR

- 0 : BLACK HOUSING + IVORY EJECTOR
- 1 : BLUE HOUSING + IVORY EJECTOR
- 2 : BLACK HOUSING + BLACK EJECTOR
- 3 : BLACK HOUSING + CLEAR EJECTOR
- 4 : BLUE HOUSING + CLEAR EJECTOR
- 5 : IVORY HOUSING + CLEAR EJECTOR
- 6 : BLACK HOUSING + BLUE EJECTOR
- 7 : IVORY HOUSING + IVORY EJECTOR
- 9 : IVORY HOUSING + BLACK EJECTOR

- NOTES:
- MATERIAL:
HOUSING: HIGH PERFORMANCE RESINS, GLASS FILLED UL94V-0 RATED.
EJECTOR: HIGH PERFORMANCE RESINS, GLASS FILLED UL94V-0 RATED.
TERMINAL: COPPER ALLOY.
METAL CLIP: COPPER ALLOY.
 - FCI LOGO TO BE APPROXIMATELY LOCATED AS SHOWN ON PRINT.
 - PRODUCT SPECIFICATION: GS-12-486
 - PACKAGING SPECIFICATION: GS-14-899.
 - CARD THICKNESS APPLIES ACROSS TABS AND INCLUDES PLATING AND/OR METALIZATION.
 - LEADING EDGE OF CONTACT PADS SPECIFIED BY THE KEEP OUT ZONE SHALL BE FREE OF BURRS AND EXTERNAL TIE BARS. FOR OPTIMUM PERFORMANCE, THE TIE BAR IS TO BE ON AN INTERNAL LAYER SO THAT THE REMNANT CANNOT CAUSE CONTACT DAMAGE.
 - THE DATE CODE IS SHOWN "MMDDYY*", "*" MEANS PRODUCTION LINE CODE.
 - SOCKET IS COMPLIANT TO JEDEC SO-007 AND ACCEPTS JEDEC MODULE MO-269, VARIATIONS AA THRU FC.
 - THIS PRODUCT MEETS EUROPEAN UNION DIRECTIVES AND OTHER COUNTRY REGULATIONS AS DESCRIBED IN GS-22-008.
 - THE HOUSING WILL WITH STAND EXPOSURE TO 260°C PEAK TEMPERATURE FOR 10 SECONDS IN A WAVE SOLDER APPLICATION.
 - THE CLEAR LATCH CAN WITHSTAND MAX 174°C EXPOSURE TEMPERATUER.

tolerance unless otherwise specified	
linear	.X ± .38 .XX ± .25 .XXX ± .13
angles	0° ± 2°

	title	DDR3 R-DIMM CONNECTOR	dwg no	10081531	Rev. D
	catalog no	PEG TYPE			
CUSTOMER			sheet 4 of 4		

REV F - 2004-04-07

1 2 3 4