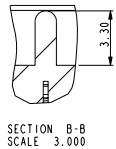
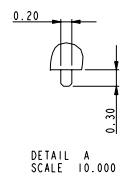
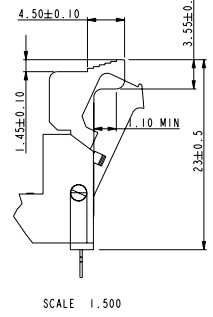
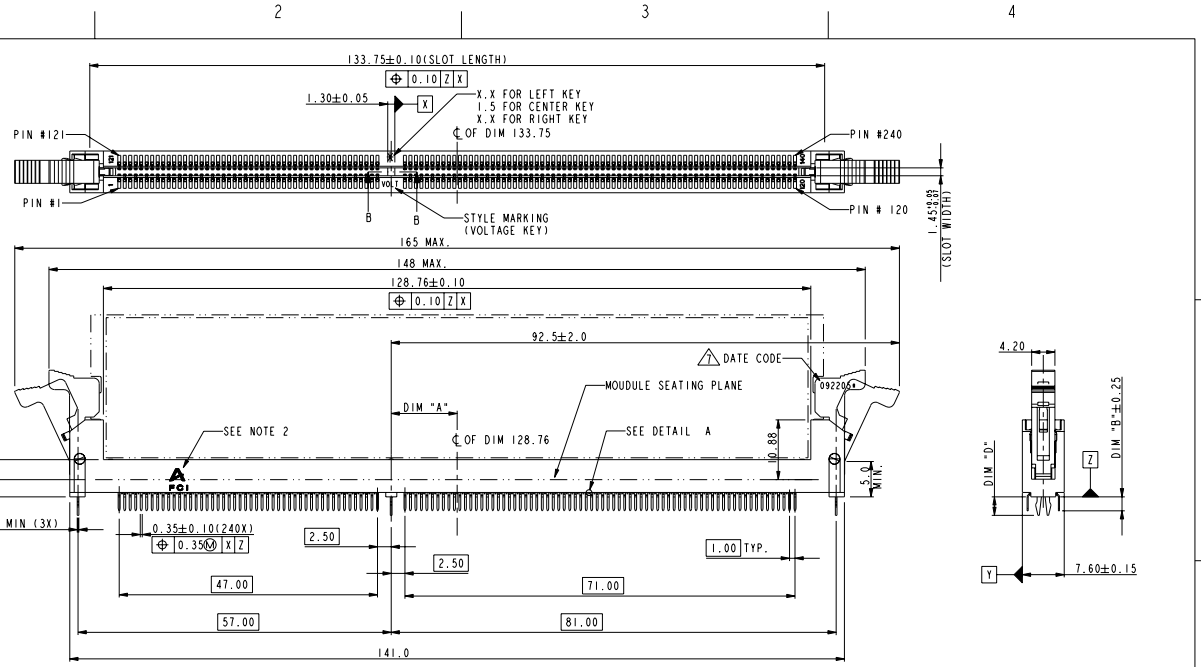


PART NO.	DIM "A"	DESCRIPTION
10081530-1****	12.00	I.5V
10081530-2****	11.00	X.XV
10081530-3****	13.00	X.XV



REV	ECN NO.	DR	DATE
A	0607-0401	B	L 12/18/2009
B	0608-0138	B	L 05/27/2008
C	0608-0172	B	L 07/23/2008
D	0608-0359	B	L 12/25/2008
E	0609-0174	B	L 06/01/2009
F	N10-0025	R,B	04/16/2010
G	N10-0129	R,B	2010-05-18

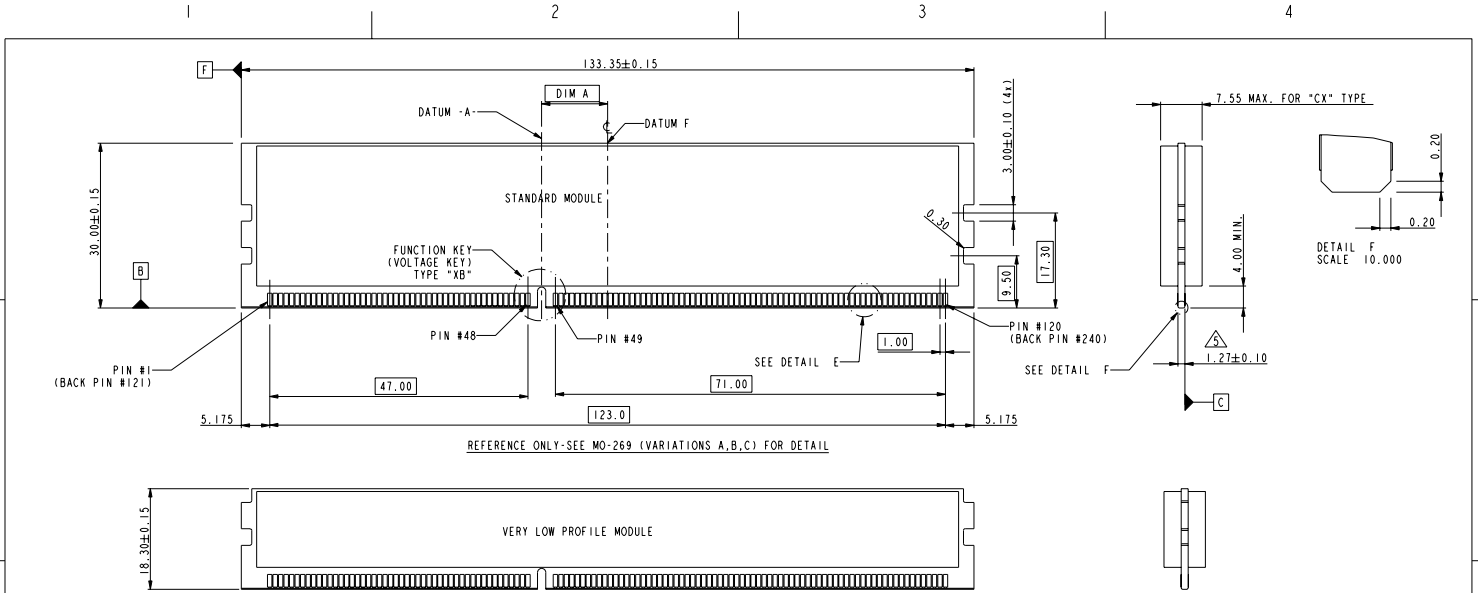
www.fciconnect.com		surface	tolerance std	projection	MM
Dr CHARLIE S 08/27/07		ANGULAR	0.X ±.38	size A4	Scale 0.500
Eng RICK BIAN 08/27/07		LINEAR	0.XX ±.25	ECN PRE	
Chr GARY HSIEH 08/27/07		0° ± 2°	0.XXX ±.13	Spec ref	
Appr JOSEPH HSIA 08/27/07		Product family			
FCJ		Title DDR3 R-DIMM CONNECTOR METAL CLIP TYPE		dwg no 10081530	Rev. G
catalog no		CUSTOMER		sheet 1 of 4	



Copyright FCJ.

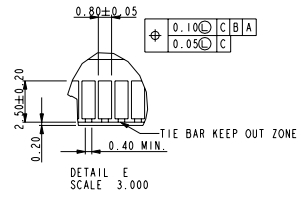
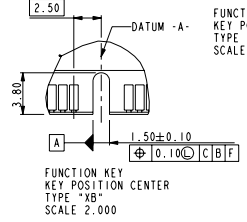
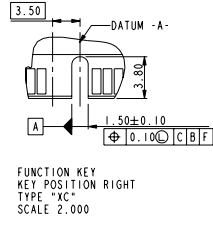
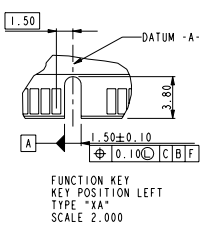
REV F - 2004-04-07

PDM: Rev:G STATUS: Released 4 Printed: Jul 28, 2010



REFERENCE ONLY-SEE MO-269 (VARIATIONS A,B,C) FOR DETAIL

REFERENCE ONLY-SEE MO-269 (VARIATIONS D,E,F) FOR DETAIL



TYPE "XA"	X.X VOLTAGE
TYPE "XC"	X.X VOLTAGE
TYPE "XB"	1.5 VOLTAGE
SUB KEY POS #1	DESCRIPTION

tolerance unless otherwise specified	
linear	.X ± .38
	.XX ± .25
	.XXX ± .13
angles	0° ± 2°

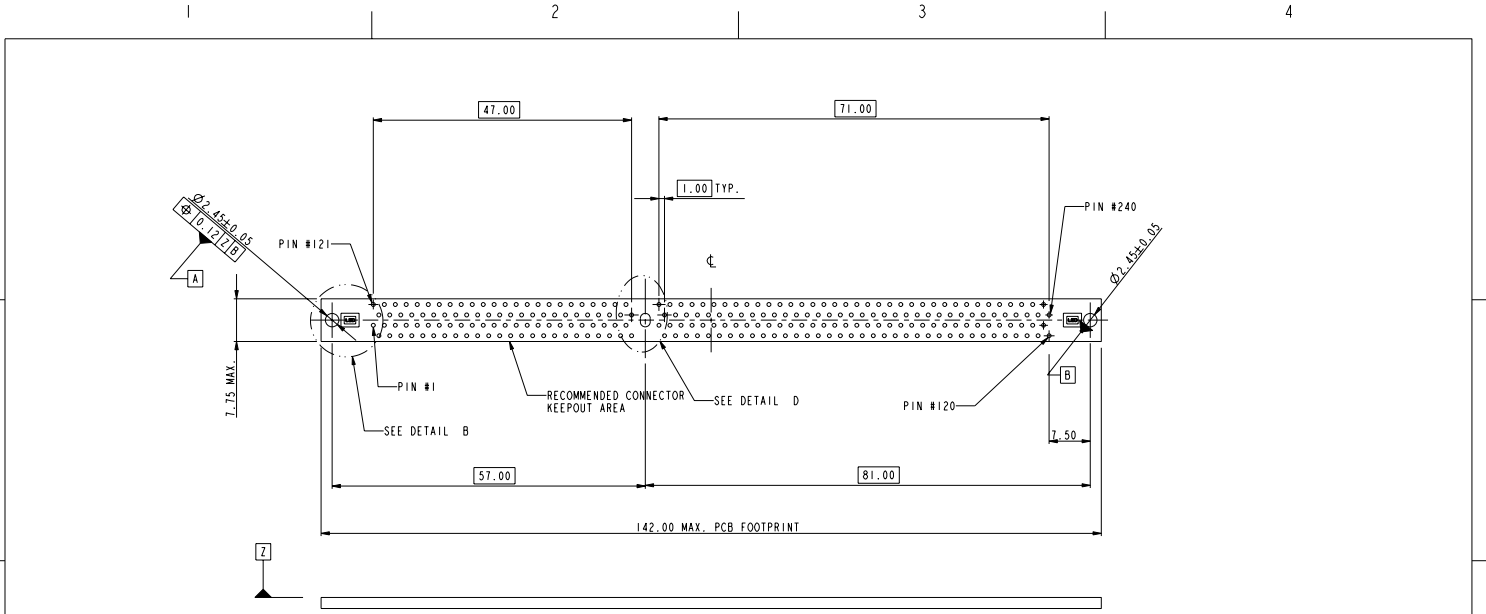
	TITLE	DDR3 R-DIMM CONNECTOR	catalog no - CUSTOMER	Rev. G
	TITLE	METAL CLIP TYPE		



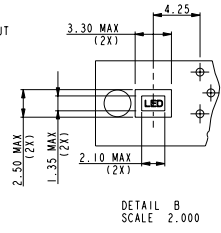
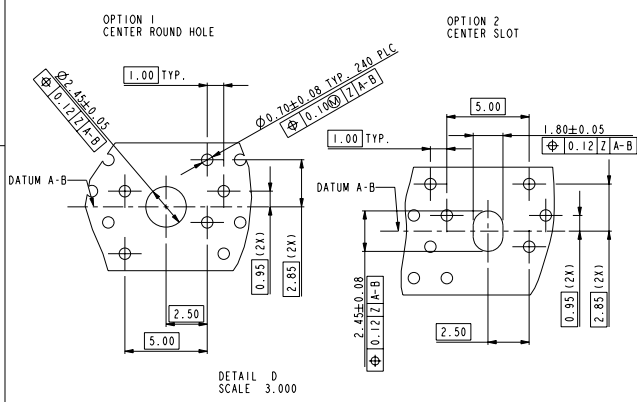
Copyright FCI.



Copyright FCI.



RECOMMENDED CIRCUIT BOARD HOLE LAYOUT



tolerance unless otherwise specified	
linear	.X ± .38
	.XX ± .25
	.XXX ± .13
angles	0° ± 2°

	title	DDR3 R-DIMM CONNECTOR	dwg no	10081530	Rev.	G
		METAL CLIP TYPE				
	catalog no		CUSTOMER	sheet 3 of 4		



Copyright FCI.

1 2 3 4

A

B

C

D

A

B

C

D

10081530 - □ □ □ □

STYLE : MECHANICAL KEYING

- 1 : 1.5 VOLT. W/ CENTER KEY "XB"
- 2 : X.X VOLT. W/ LEFT KEY "XA"
- 3 : X.X VOLT. W/ RIGHT KEY "XC"

CODE	METAL CLIP DIM "D"	TAIL LENGTH DIM "B"
11	3.05	2.67
22	3.56	3.18
33	3.56	4.00

PLATING

CODE	CONTACT	SOLDERTAIL	UNDERPLATE
2	15u" (0.38um) MIN. GOLD		
3	30u" (0.76um) MIN. GOLD	100u" (2.54um) MIN. TIN/LEAD	50u" (1.27um) MIN. NICKEL OVERALL
4	GOLD FLASH		
5LF	20u" (0.508um) MIN. GOLD		90u" (2.29um)MIN NICKEL OVERALL
7LF	15u" (0.38um) MIN. GOLD	100u" (2.54um) MIN. 100% TIN	50u" (1.27um) MIN. NICKEL OVERALL
8LF	30u" (0.76um) MIN. GOLD		
9LF	3u" (0.07um) MIN. GOLD		

COLOR OF HOUSING AND EJECTOR

- 0 : BLACK HOUSING + IVORY EJECTOR
- 1 : BLUE HOUSING + IVORY EJECTOR
- 2 : BLACK HOUSING + BLACK EJECTOR
- 3 : BLACK HOUSING + CLEAR EJECTOR
- 4 : BLUE HOUSING + CLEAR EJECTOR
- 5 : IVORY HOUSING + CLEAR EJECTOR
- 6 : BLACK HOUSING + BLUE(2945C) EJECTOR
- 7 : IVORY HOUSING + IVORY EJECTOR
- 8 : BLACK HOUSING + GREEN(375C) EJECTOR
- 9 : IVORY HOUSING + BLACK EJECTOR
- A : GREEN HOUSING + IVORY EJECTOR

NOTES:

1. MATERIAL:
HOUSING: HIGH PERFORMANCE RESINS, GLASS FILLED UL94V-0 RATED.
EJECTOR: HIGH PERFORMANCE RESINS, GLASS FILLED UL94V-0 RATED.
TERMINAL: COPPER ALLOY.
METAL CLIP: COPPER ALLOY.
2. FCI LOGO TO BE APPROXIMATELY LOCATED AS SHOWN ON PRINT.
3. PRODUCT SPECIFICATION: GS-12-486.
4. PACKAGING SPECIFICATION: GS-14-899.
5. CARD THICKNESS APPLIES ACROSS TABS AND INCLUDES PLATING AND/OR METALIZATION.
6. LEADING EDGE OF CONTACT PADS SPECIFIED BY THE KEEP OUT ZONE SHALL BE FREE OF BURRS AND EXTERNAL TIE BARS. FOR OPTIMUM PERFORMANCE, THE TIE BAR IS TO BE ON AN INTERNAL LAYER SO THAT THE REMNANT CANNOT CAUSE CONTACT DAMAGE.
7. THE DATE CODE IS SHOWN "MMDDYY*", "*" MEANS PRODUCTION LINE CODE.
8. SOCKET IS COMPLIANT TO JEDEC SO-007 AND ACCEPTS JEDEC MODULE MO-269, VARIATIONS AA THRU FC.
9. THIS PRODUCT MEETS EUROPEAN UNION DIRECTIVES AND OTHER COUNTRY REGULATIONS AS DESCRIBED IN GS-22-008.
10. THE HOUSING WILL WITH STAND EXPOSURE TO 260°C PEAK TEMPERATURE FOR 10 SECONDS IN A WAVE SOLDER APPLICATION.
11. THE CLEAR LATCH CAN WITHSTAND MAX 174°C EXPOSURE TEMPERATURE.

tolerance unless otherwise specified	
linear	.X ± .38 .XX ± .25 .XXX ± .13
angles	0° ± 2°

	DDR3 R-DIMM CONNECTOR	drawing no	10081530	Rev. G
	METAL CLIP TYPE			
catalog no			sheet 4 of 4	

REV F - 2004-04-07

1 2 3 4

PDM: Rev:G STATUS Released 4 Printed: Jul 28, 2010