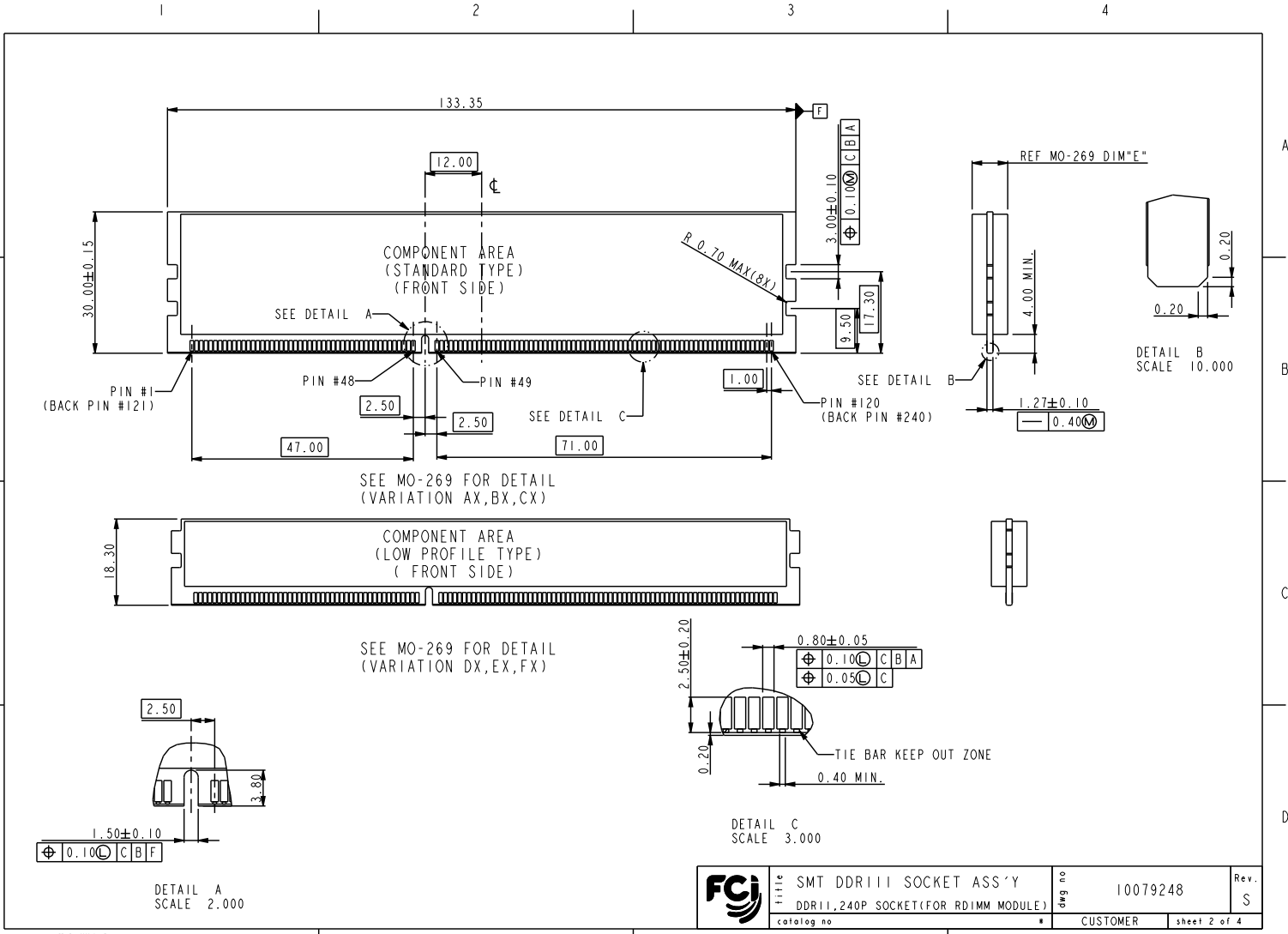






Copyright FCI.



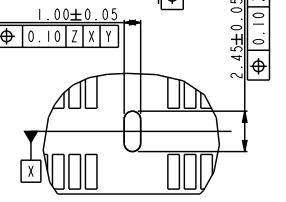
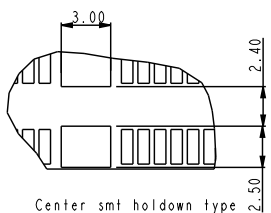
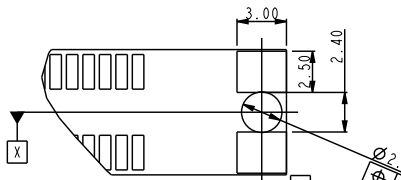
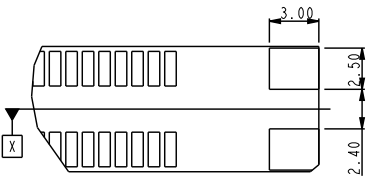
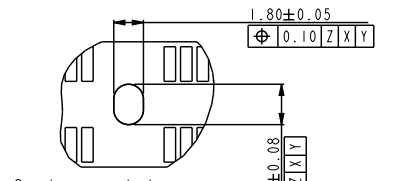
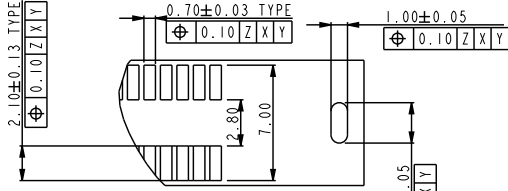
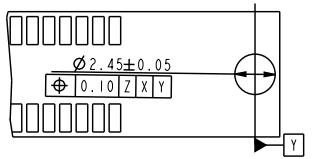
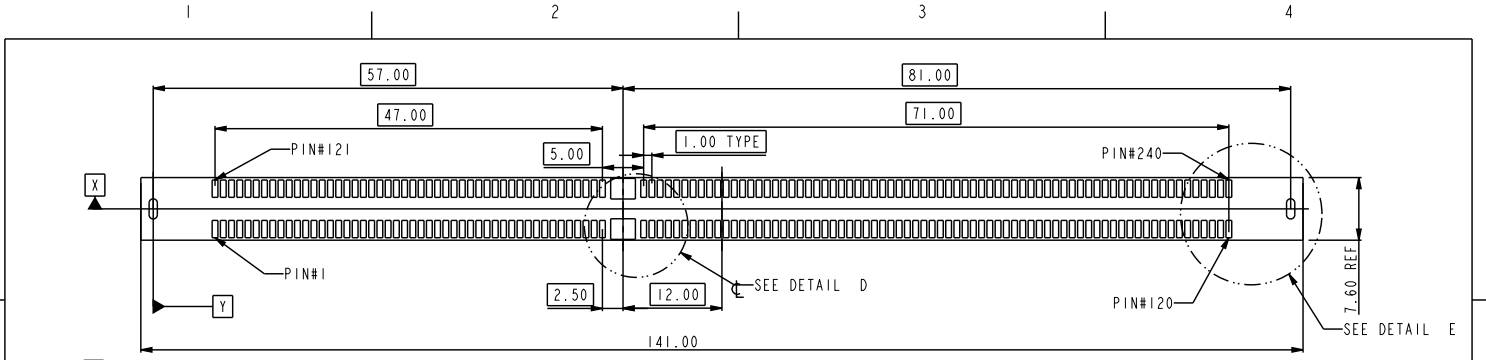
REV F - 2004-04-17

	title	SMT DDRIII SOCKET ASS'Y	dwg no	10079248	Rev.	S
	catalog no	DDR11,240P SOCKET(FOR RDIMM MODULE)	CUSTOMER	sheet 2 of 4		

PDM: Rev:S STATUS Released 4 Printed: Apr 22, 2011



Copyright FCI.



REV F - 2004-04-07



title	SMT DDRIII SOCKET ASS'Y	dwg no	10079248	Rev.	S
catalog no	DDR11,240P SOCKET(FOR RDIMM MODULE)	* CUSTOMER	sheet 3 of 4		



Copyright FCI.

10079248-10\*\*\*  
CENTER SMT HOLDOWN TYPE

SCALE 0.500

10079248-11\*\*\*  
3 FORK LOCK TYPE

SCALE 0.500

10079248-12\*\*\*  
3 SMT HOLDOWN TYPE

SCALE 0.500

10079248-13\*\*\*  
3 SMT HOLDOWN AND 2 PLASTIC POST TYPE

SCALE 0.500

10079248-15\*\*\*  
3 PLASTIC POST TYPE

SCALE 0.500

10079248 - □ □ □ □

STYLE : MECHANICAL KEYING

1 : 1.5 VOLT. W/ CENTER KEY

HOLD DOWN TYPE

0 : CENTER HOLD DOWN, FORKLOCK AT BOTH END  
1: 3 FORKLOCK TYPE  
2: 3 SMT HOLDOWN TYPE  
3: 3 SMT HOLDOWN AND 2 PLASTIC POST  
5: 3 PLASTIC POST TYPE

PACKAGE AND MYLAR OPTION

0: SOFT TRAY WITHOUT MYLAR  
1: HARD TRAY WITH MYLAR 1  
2: HARD TRAY WITHOUT MYLAR  
3: SOFT TRAY WITH MYLAR 1  
4: SPECIAL HARD TRAY WITH MYLAR 1  
5: SPECIAL HARD TRAY WITHOUT MYLAR  
6: HARD TRAY WITH MYLAR 2  
7: SOFT TRAY WITH MYLAR 2  
8: SPECIAL HARD TRAY WITH MYLAR 2

DETAIL N  
SCALE 5.000

DETAIL J  
SCALE 5.000

DETAIL M  
SCALE 5.000

SECTION K-K  
SCALE 5.000

SCALE 0.500  
WITH MYLAR TAPE (OPTIONAL)

MYLAR	TYPE	DIM X	DIM Y
MYLAR 1		30.0	49.38
MYLAR 2		90.0	19.38

CODE	CONTACT	SOLDERTAIL	UNDERPLATE	NOTE
1	10u" (0.25um) MIN. GOLD	100u" (2.54um) MIN. TIN-LEAD	50u" (1.27um) MIN. NICKEL OVERALL	CONTACT NON-LUBRICANT
2	15u" (0.38um) MIN. GOLD			
3	30u" (0.76um) MIN. GOLD			
4	GOLD FLASH			
5	10u" (0.25um) MIN. GOLD			CONTACT LUBRICATED
6	15u" (0.38um) MIN. GOLD			
7	30u" (0.76um) MIN. GOLD			
8	GOLD FLASH			
1LF	10u" (0.25um) MIN. GOLD	100u" (2.54um) MIN. 100% MATT TIN	50u" (1.27um) MIN. NICKEL OVERALL	CONTACT NON-LUBRICANT
2LF	15u" (0.38um) MIN. GOLD			
3LF	30u" (0.76um) MIN. GOLD			
4LF	GOLD FLASH			
5LF	10u" (0.25um) MIN. GOLD			CONTACT LUBRICATED
6LF	15u" (0.38um) MIN. GOLD			
7LF	30u" (0.76um) MIN. GOLD			
8LF	GOLD FLASH			

COLOR OF HOUSING AND EJECTOR

0 : BLACK HOUSING + IVORY EJECTOR  
1 : BLACK HOUSING + BLACK EJECTOR  
2 : BLACK HOUSING + BLUE(661C) EJECTOR  
3 : BLACK HOUSING + YELLOW(123C) EJECTOR

- NOTES:
- MATERIAL:  
HOUSING: HIGH PERFORMANCE RESINS, GLASS FILLED UL94V-0 RATED.  
EJECTOR: HIGH PERFORMANCE RESINS, GLASS FILLED UL94V-0 RATED.  
TERMINAL: HIGH PERFORMANCE COPPER ALLOY  
METAL CLIP: COPPER ALLOY.
  - FCI LOGO TO BE APPROXIMATELY LOCATED AS SHOWN ON PRINT.
  - PRODUCT SPECIFICATION: GS-12-486.
  - PACKAGING SPECIFICATION: GS-14-899.
  - RECOMMENDED STENCIL THICKNESS NO LESS THAN 0.15 mm.
  - FOR OPTIMUM PERFORMANCE, THE TIE BAR IS TO BE ON AN INTERNAL LAYER SO THAT THE REMNANT CANNOT CAUSE CONTACT DAMAGE.
  - THE DATE CODE IS SHOWN "MMDDYY\*"."\*" MEANS PRODUCTION LINE.
  - THIS PRODUCT MEETS EUROPEAN UNION DIRECTIVES AND OTHER COUNTRY REGULATIONS AS DESCRIBED IN GS-22-008.
  - THE HOUSING WILL WITH STAND EXPOSURE TO 260°C PEAK TEMPERATURE FOR 10 SECONDS IN AN IR REFLOW SOLDERING APPLICATION.
  - PRODUCT APPLICATION SPEC GS-20-089.
  - THE HOLDOWN TYPES ARE OPTION FOR HOLDOWN OR FORKLOCK.

	TITLE	PART NO	Rev.
	SMT DDRIII SOCKET ASS'Y DDR11,240P SOCKET(FOR RDIMM MODULE)	10079248	S
CATALOG NO	CUSTOMER	sheet 4 of 4	