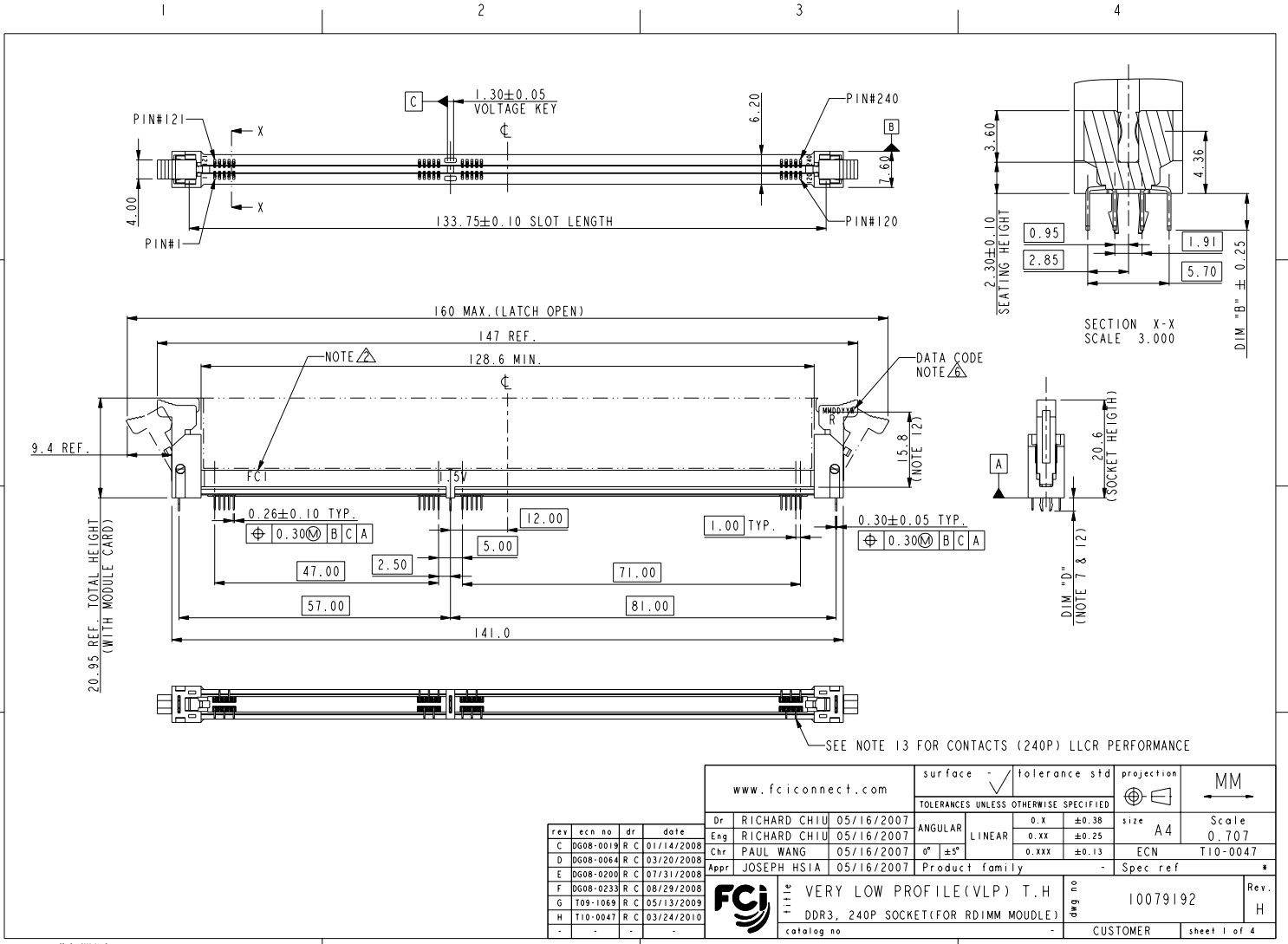




Copyright FCI.



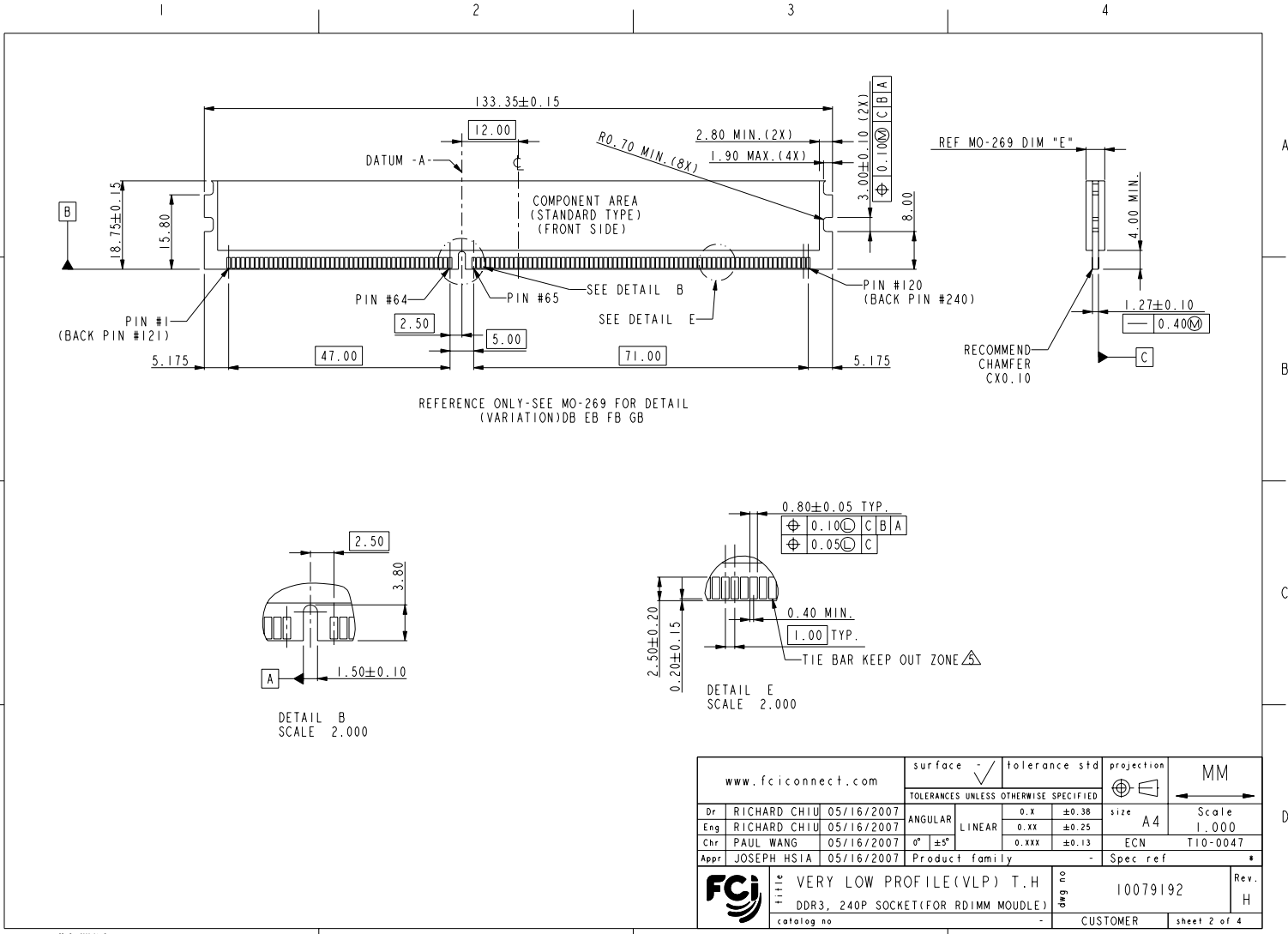
rev	ecn no	dr	date
C	0608-0019	R	01/14/2008
D	0608-0064	R	03/20/2008
E	0608-0200	R	07/31/2008
F	0608-0233	R	08/29/2008
G	109-1069	R	05/13/2009
H	T10-0047	R	03/24/2010

www.fciconnect.com		surface	tolerance std	projection	MM
		TOLERANCES UNLESS OTHERWISE SPECIFIED			
Dr	RICHARD CHIU	05/16/2007	ANGULAR	0.x	±0.38
Eng	RICHARD CHIU	05/16/2007	LINEAR	0.xx	±0.25
Chr	PAUL WANG	05/16/2007	0° ±5°	0.xxx	±0.13
Appr	JOSEPH HSIA	05/16/2007	Product family	ECN	T10-0047
				Spec ref	
		<b>TITLE</b> VERY LOW PROFILE (VLP) T.H DDR3, 240P SOCKET (FOR RDIMM MODULE)		<b>dwg no</b> 10079192	<b>Rev.</b> H
catalog no		CUSTOMER		sheet 1 of 4	

PDM: Rev:H STATUS:Released 4 Printed: Jun 30, 2010



Copyright FCI.



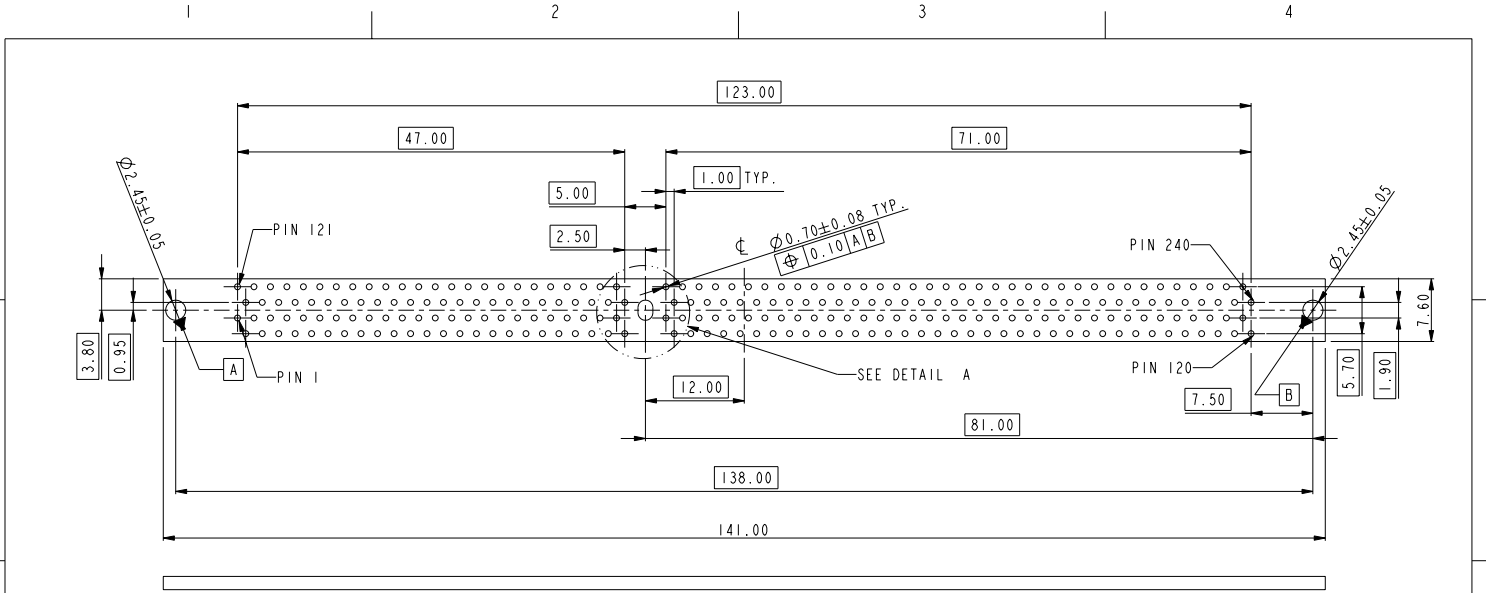
REV 1 - 2004-04-07

www.fciconnect.com		surface <input checked="" type="checkbox"/>	tolerance std	projection	MM
TOLERANCES UNLESS OTHERWISE SPECIFIED					
Dr	RICHARD CHIU	05/16/2007	ANGULAR	LINEAR	size A4
Eng	RICHARD CHIU	05/16/2007	0.x	±0.38	Scale 1.000
Chr	PAUL WANG	05/16/2007	0.xx	±0.25	ECN T10-0047
Appr	JOSEPH HSIA	05/16/2007	0.xxx	±0.13	Spec ref
FCI		VERY LOW PROFILE (VLP) T.H		Wing no	10079192
		DDR3, 240P SOCKET (FOR RDIMM MODULE)		Rev.	H
catalog no		CUSTOMER		sheet 2 of 4	

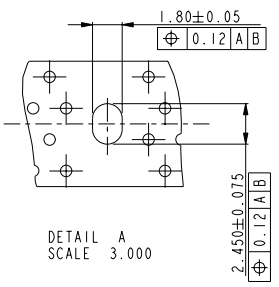
PDM: Rev:H STATUS: Released 4 Printed: Jun 30, 2010



Copyright FCI.



RECOMMENDED CIRCUIT BOARD HOLE LAYOUT



DETAIL A  
SCALE 3.000

www.fciconnect.com		surface <input checked="" type="checkbox"/>	tolerance std	projection	MM
TOLERANCES UNLESS OTHERWISE SPECIFIED					
Dr RICHARD CHIU 05/16/2007	ANGULAR	LINEAR	0.x ±0.38	size A4	Scale 0.707
Eng RICHARD CHIU 05/16/2007	0° ±5°		0.xx ±0.25	ECN T10-0047	
Chr PAUL WANG 05/16/2007			0.xxx ±0.13		
Appr JOSEPH HSIA 05/16/2007	Product family			Spec ref	
<b>FCI</b>	VERY LOW PROFILE (VLP) T.H	Wing no	10079192	Rev. H	
catalog no	DDR3, 240P SOCKET (FOR RDIMM MOUDLE)		CUSTOMER	sheet 3 of 4	

1 2 3 4

A

B

C

D

10079192 - □ □ □ □

STYLE : MECHANICAL KEYING  
1 : 1.5 VOLT. W/ CENTER KEY

CONTACT & FORKLOCK LENGTH

CODE	DIM "B"	DIM "D"	PCB THICKNESS
00	2.67 mm	3.50 mm	1.60 mm (0.063")
11	3.18 mm	4.00 mm	2.36 mm (0.093")

PLATING

CODE	CONTACT	SOLDERTAIL	UNDERPLATE
2LF	15u" (0.38um) MIN. GOLD		
3LF	30u" (0.76um) MIN. GOLD	100u" (2.54um) MIN. 100% MATTE TIN	50u" (1.27um) MIN. NICKEL OVERALL
4LF	3u" (0.076um) MIN. GOLD		

COLOR OF HOUSING AND EJECTOR

- 0 : BLACK HOUSING + IVORY EJECTOR
- 1 : BLACK HOUSING + AMBER EJECTOR (NOTE. 11)
- 2 : BLACK HOUSING + BLACK EJECTOR
- 8 : IVORY HOUSING + IVORY EJECTOR
- 9 : IVORY HOUSING + BLACK EJECTOR

NOTES:

1. MATERIAL:  
HOUSING: HIGH PERFORMANCE RESINS, GLASS FILLED UL94V-0 RATED.  
EJECTOR: HIGH PERFORMANCE RESINS, GLASS FILLED UL94V-0 RATED.  
TERMINAL: HIGH PERFORMANCE COPPER ALLOY  
METAL CLIP: COPPER ALLOY.
2. FCI LOGO TO BE APPROXIMATELY LOCATED AS SHOWN ON PRINT.
3. PRODUCT SPECIFICATION: GS-12-486.
4. PACKAGING SPECIFICATION: GS-14-899.
5. FOR OPTIMUM PERFORMANCE, THE TIE BAR IS TO BE ON AN INTERNAL LAYER SO THAT THE REMNANT CANNOT CAUSE CONTACT DAMAGE.
6. THE DATE CODE IS SHOWN "MM-DD-YY-W". "W" MEANS PRODUCTION LINE. "R" MEANS FOR 'RDIMM' SOCKET.
7. THE REQUIRED PCB THICKNESS IS 1.60MM MINIMUM FOR BOARD LOCK RETENTION.
8. THIS SOCKET MEETS APPLICABLE JEDEC STD.; SOCKET OUTLINE SO-XXX, GAUGE GS-00X AND GS-00X. (SUSPENDED BY JEDEC)
9. THIS PRODUCT MEETS EUROPEAN UNION DIRECTIVES AND OTHER COUNTRY REGULATIONS AS DESCRIBED IN GS-22-008.
10. THE HOUSING WILL WITH STAND EXPOSURE TO 260 ± 5°C PEAK TEMPERATURE FOR 10 SECONDS IN A WAVE SOLDERING APPLICATION.
11. AMBER EJECTOR OPTION IS ONLY FOR SOLDERING ENVIRONMENT TEMP. UNDER 170°C.
12. FROM SEATING PLANE TO TOP MODULE CARD ENGAGEMENT.
13. THIS SOCKET CONTACT EOL RESISTANCE IS DESIGNED TO BE 20 mohm MAX.



Copyright FCI.

www.fciconnect.com		surface <input checked="" type="checkbox"/>	tolerance std	projection	MM
TOLERANCES UNLESS OTHERWISE SPECIFIED					
Dr	RICHARD CHIU	05/16/2007	ANGULAR	LINEAR	size A4
Eng	RICHARD CHIU	05/16/2007	0.x	±0.38	Scale 1:000
Chr	PAUL WANG	05/16/2007	0°	±0.25	ECN T10-0047
Appr	JOSEPH HSIA	05/16/2007	0.xxx	±0.13	Spec ref
FCI		VERY LOW PROFILE (VLP) T.H		10079192	Rev. H
catalog no		-		CUSTOMER	sheet 4 of 4

REV. 2004-04-07

1 2 3 4

PDM: Rev:H STATUS: Released 4 Printed: Jun 30, 2010