

Customer Information Sheet

DRAWING No.: M20-106XX00

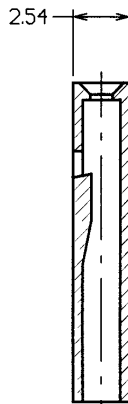
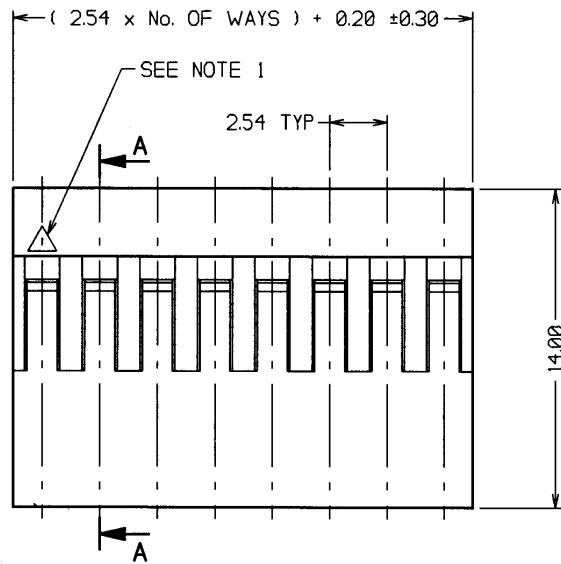
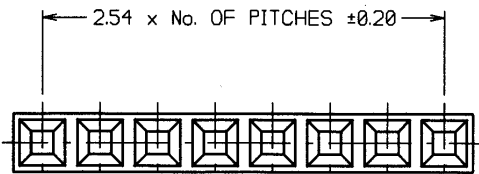
SHEET 2 OF 2 IF IN DOUBT - ASK

©

NOT TO SCALE

THIRD ANGLE PROJECTION

ALL DIMENSIONS IN mm



SECTION A-A

ORDER CODE:
M20-106XX00
No. OF WAYS
01 TO 12

SPECIFICATIONS:

ELECTRICAL:

- CURRENT RATING = 3A AC/DC
- VOLTAGE RATING = 250V AC MAX
- CONTACT RESISTANCE = 20 MILLIOHMS MAX
- INSULATION RESISTANCE = 5,000 MEGOHMS MIN
- DIELECTRIC STRENGTH = 1,500V AC FOR 1 MINUTE

ENVIRONMENTAL:

- TEMPERATURE RANGE = -40°C TO +105°C

NOTES:

1. CONTACT No. 1 MARKER SYMBOL.
2. FOR USE WITH CRIMP CONTACTS:
M20-11600XX (REELED CONTACTS),
M20-11800XX (LOOSE CONTACTS).
3. THE ABOVE SPECIFICATIONS APPLY WHEN THIS MOULDING IS USED WITH THE SPECIFIED CONTACTS.
4. FOR COMPLETE ELECTRICAL AND MECHANICAL SPECIFICATIONS, SEE COMPONENT SPECIFICATION C001XX (LATEST ISSUE).

WJB	5	19.06.01	5894
NAME	ISS.	DATE	C/NOTE
APPROVED:	<i>[Signature]</i>		
CHECKED:	<i>[Signature]</i>		
DRAWN:	K. LIOTTA		
CUSTOMER REF.:			
ASSEMBLY DRG.:			

HARWIN

HARWIN INC
U.S.A.
TEL: (812) 285 0055
FAX: (812) 285 0056

HARWIN PLC
U.K.
TEL: 023 9237 0451
FAX: 023 9231 4590

HARWIN PTE
SINGAPORE
TEL: 65 7794909
FAX: 65 7793868

THIS DRAWING AND ANY INFORMATION OR DESCRIPTIVE MATTER SET OUT HEREON ARE CONFIDENTIAL AND COPYRIGHT PROPERTY OF THE HARWIN GROUP AND MUST NOT BE DISCLOSED, LOANED, COPIED OR USED FOR MANUFACTURING, TENDERING OR FOR ANY OTHER PURPOSE WITHOUT THEIR WRITTEN PERMISSION

TOLERANCES
X. - ±1mm
X.X - ±0.25mm
X.XX - ±0.10mm
X.XXX - ±0.01mm
ANGLES - ±5°
UNLESS STATED

MATERIAL:
MODIFIED PPO
UL94V-1 BLACK
FINISH: CLEAN
S/AREA: mm²

TITLE:
2.54mm PITCH SIL
CRIMP MOULDING

DRAWING NUMBER:
M20-106XX00

SHT
2
OF
2