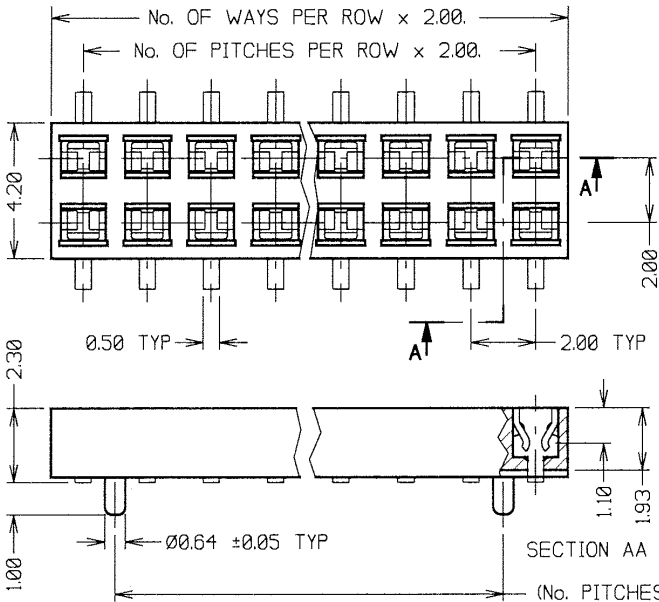


# Customer Information Sheet

DRAWING No.: M22-636XXXX SHEET 3 OF 3 IF IN DOUBT - ASK (C) NOT TO SCALE THIRD ANGLE PROJECTION ALL DIMENSIONS IN mm



### SPECIFICATIONS:

**MATERIAL:**  
 MOULDING - 30% GLASS FILLED NYLON-6T UL94V-0  
 CONTACTS - PHOSPHOR BRONZE

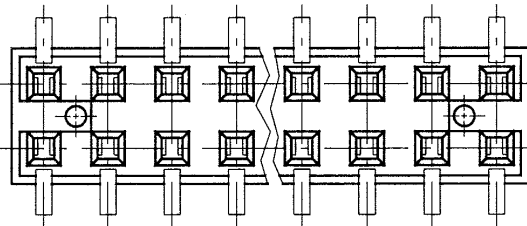
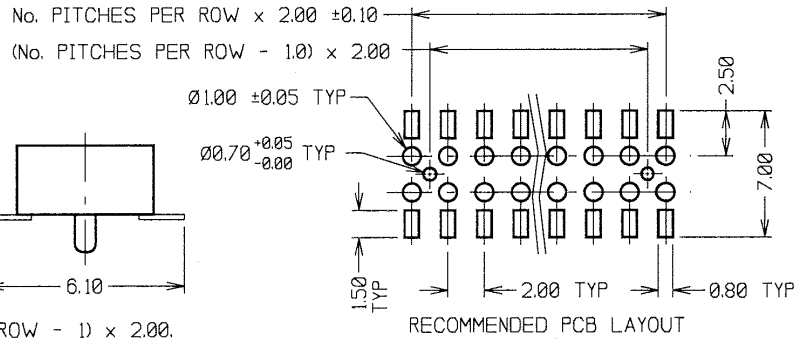
**FINISH:**  
 42 - 0.02-0.08µ GOLD ON CONTACT AREA,  
 2.5-3.8µ 100% TIN ON TAILS  
 46 - 2.5-3.8µ 100% TIN

**ELECTRICAL:**  
 CURRENT RATING = 15 AMPS  
 CONTACT RESISTANCE = 20 MILLIOHMS MAX  
 INSULATION RESISTANCE = 1000 MEGOHMS MIN  
 DIELECTRIC WITHSTANDING = 500V AC MIN

**MECHANICAL:**  
 CONTACT RETENTION = 4.9N MIN  
 INSERTION FORCE = 2.00N MAX  
 WITHDRAWAL FORCE = 0.30 MIN

**ENVIRONMENTAL:**  
 TEMPERATURE RANGE =  
 -55°C TO +105°C

**PACKING:**  
 TUBE  
 FOR COMPLETE SPECIFICATION, SEE  
 COMPONENT SPECIFICATION C018XX  
 (LATEST ISSUE).



**NOTES:**  
 1. ALL TOLERANCES  
 ARE ±0.20 UNLESS  
 OTHERWISE STATED.

ORDER CODE:  
**M22-636XXXX**

No. OF WAYS PER ROW  
 03 - 32  
 FINISH:  
 42 - SELECTIVE GOLD + 100% TIN  
 46 - 100% TIN

JMB	7	23.06.06	9286
NAME	ISS.	DATE	C/NOTE
APPROVED:			
CHECKED:			
DRAWN:	D. BECK		
CUSTOMER REF:			
ASSEMBLY DRG:			

## HARWIN

HARWIN USA  
 TEL: 603 893 5376  
 FAX: 603 893 5396  
 mls@harwin.com

HARWIN Europe (UK)  
 TEL: 023 9231 4545  
 FAX: 023 9231 4590  
 mls@harwin.co.uk

HARWIN Asia  
 TEL: +65 6 779 4909  
 FAX: +65 6 779 3868  
 mls@harwin.com.sg

THIS DRAWING AND ANY  
 INFORMATION OR DESCRIPTIVE  
 MATTER SET OUT HEREON ARE  
 CONFIDENTIAL AND COPYRIGHT  
 PROPERTY OF THE HARWIN  
 GROUP AND MUST NOT BE  
 DISCLOSED, LOANED, COPIED  
 OR USED FOR MANUFACTURING,  
 TENDERING OR FOR ANY  
 OTHER PURPOSE WITHOUT  
 THEIR WRITTEN PERMISSION.

**TOLERANCES**  
 X. = ±1mm  
 X.X = ±0.25mm  
 X.XX = ±0.10mm  
 X.XXX = ±0.01mm  
 ANGLES = ±5°  
 UNLESS STATED

**MATERIAL:**  
 SEE ABOVE

**FINISH:** SEE ABOVE

**S/AREA:** mm<sup>2</sup>

**TITLE:**  
 2mm PITCH DIL SMT VERTICAL  
 LOW-PROFILE SOCKET ASSY

**DRAWING NUMBER:**  
**M22-636XXXX**

SHT  
 3  
 OF  
 3