

Customer Information Sheet

DRAWING No.: M22-533XX05

IF IN DOUBT - ASK

©

NOT TO SCALE

THIRD ANGLE PROJECTION

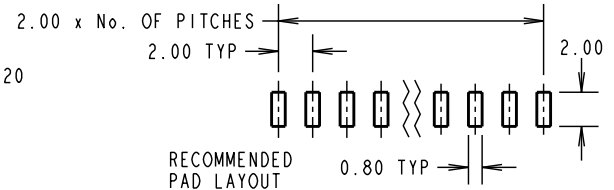
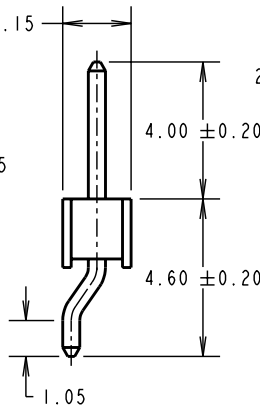
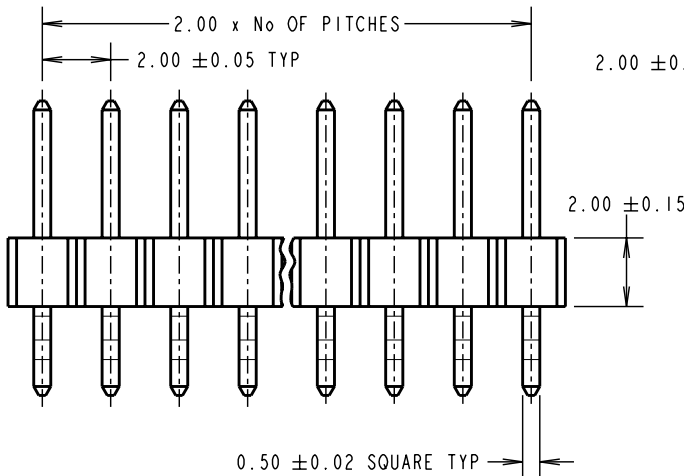
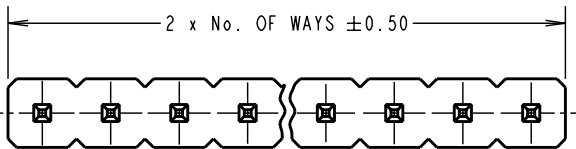
ALL DIMENSIONS IN mm

ORDER CODE:
M22-533XX05

No. OF WAYS ———
02 TO 40

SPECIFICATION:

MATERIAL:
MOULDING = NYLON 6T UL94V-0, BLACK
CONTACT = BRASS
FINISH:
CONTACT = GOLD
ELECTRICAL:
CURRENT RATING = 1.0A
CONTACT RESISTANCE = 20 MILLIOHMS MAX
INSULATION RESISTANCE = 5,000 MEGOHMS MIN
DIELECTRIC STRENGTH = 500V AC/MINUTE
ENVIRONMENTAL:
TEMPERATURE RANGE = -40°C TO +105°C
PACKING: BOX
FOR COMPLETE SPECIFICATION, SEE COMPONENT SPECIFICATION CO18XX (LATEST ISSUE)



CP	3	18.09.09	10497
NAME	ISS.	DATE	C/NOTE
APPROVED: C.PENROSE			
CHECKED: R.ADE			
DRAWN: J.EVANS			
CUSTOMER REF.:			
ASSEMBLY DRG:			

HARWIN

HARWIN USA TEL: 603 893 5376 FAX: 603 893 5396 mis@harwin.com	HARWIN Europe (UK) TEL: 023 9231 4545 FAX: 023 9231 4590 mis@harwin.co.uk	HARWIN Asia TEL: +65 6 779 4909 FAX: +65 6 779 3868 mis@harwin.com.sg
---	---	---

THIS DRAWING AND ANY INFORMATION OR DESCRIPTIVE MATTER SET OUT HEREON ARE CONFIDENTIAL AND COPYRIGHT PROPERTY OF THE HARWIN GROUP AND MUST NOT BE DISCLOSED, LOANED, COPIED OR USED FOR MANUFACTURING, TENDERING OR FOR ANY OTHER PURPOSE WITHOUT THEIR WRITTEN PERMISSION.

TOLERANCES
X. = ±1mm
X.X = ±0.25mm
X.XX = ±0.10mm
X.XXX = ±0.01mm
ANGLES = ±5°
UNLESS STATED

MATERIAL:
SEE ABOVE
FINISH: SEE ABOVE
S/AREA: mm²

TITLE:
2.00mm PITCH SIL HORIZONTAL SMT PIN HEADER ASSEMBLY
DRAWING NUMBER:
M22-533XX05
SHT 2 OF 2