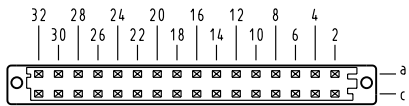


Alle Rechte vorbehalten. All rights reserved.

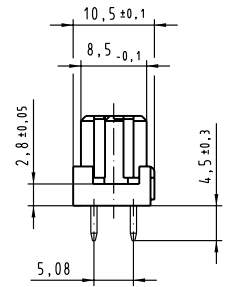
**X**  
Kontaktanordnung  
contact arrangement



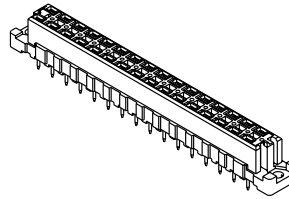
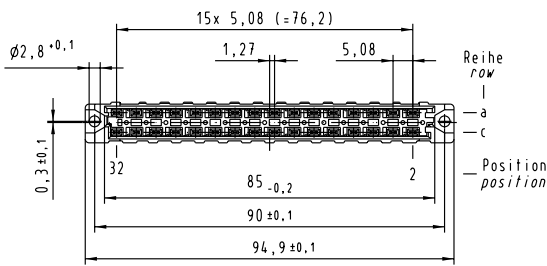
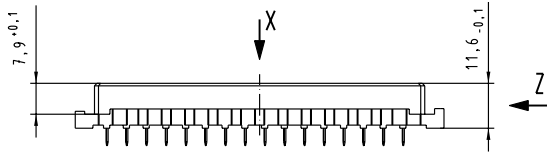
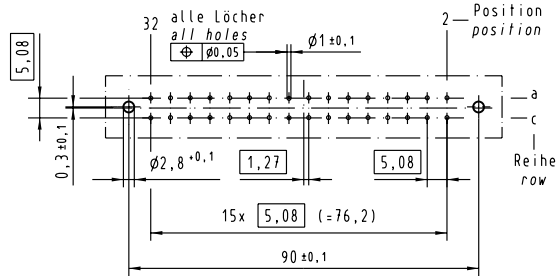
32 Einlötl-Kontakte  
32 solder-contacts

- ◻ = Einlötl-Kontakt  
= solder-contact
- ◻ / = Kontaktposition nicht belegt  
= position without contact

**Z**  
2:1

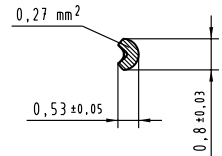


**X**  
(Lochbild)  
(board drillings)



**Y**  
10:1

Querschnitt der Lötanschlüsse:  
cross-section of solder terminations:



09 04 232 2831	3	Au über/over Ni
09 04 232 6831	2	Au über/over Ni
09 04 232 2831	1	Au über/over Ni
Bestell-Nr. part-no.	Anforderungsstufe nach IEC performance level per IEC	Kontaktoberfläche contact plating

All Dimensions in mm Original Size DIN A 3	Techn. Character. siehe / see IEC 60603-2		Nicht tolerierte Maß/ free size tolerances siehe / see IEC 60603-2	
	Dat. Detail: 27.08.03 Hage. Insp. 27.08.03 kfoe. Stand.	Name 	Maßstab/Scale 1:1 2:1, 10:1	Bauform D Federleiste Einlötl 4,5 32 pol. type D female connector solder 4,5 32 pol.
31591	HARTING Electronics GmbH & Co. KG		TB 09 04 232 x831	
Mod.	Dat.	Name	D-32339 ESPELKAMP	Sub.

Blatt/ page