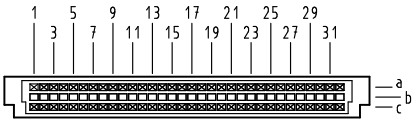


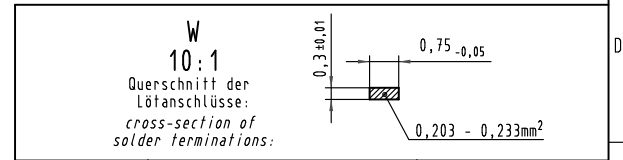
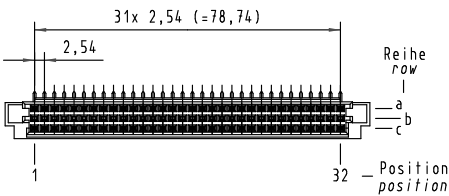
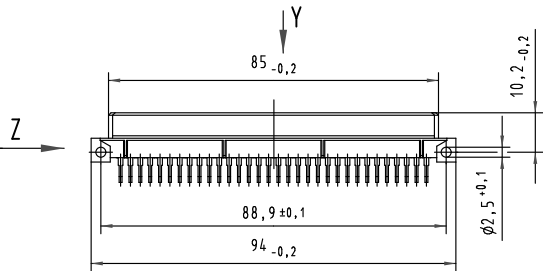
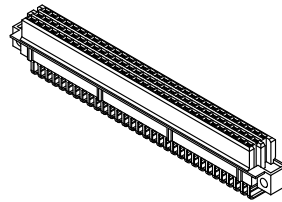
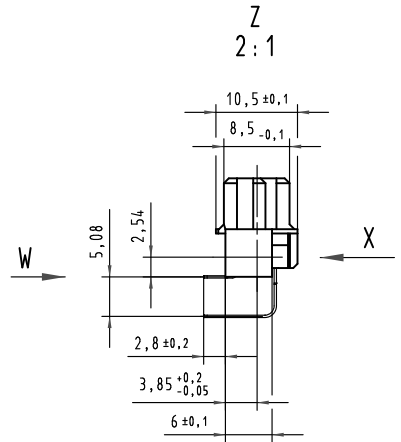
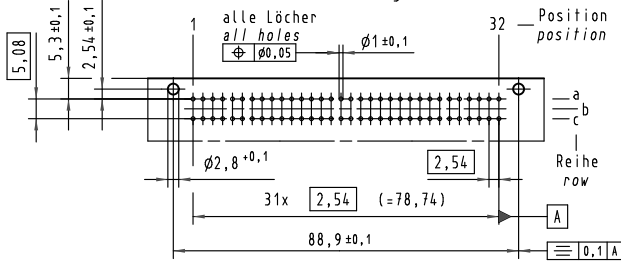
Y
Kontaktanordnung
Contact arrangement



64 Signal Kontakte
64 signal contacts

- = Kontaktposition belegt
= position with contact
- = Kontaktposition nicht belegt
= position without contact

X
(Lochbild)
(Board drillings)



09 73 264 7801	3	Au über/over Ni
09 73 264 6801	2	Au über/over Ni
09 73 264 2801	1	Au über/over Ni
Bestell-Nr. part-no.	Anforderungsstufe nach IEC performance level acc. to IEC	Kontaktoberfläche contact plating

All Dimensions in mm Original Size DIN A 3			Techn. Character.			Nicht tolerierte Maß/Free size tolerances	
34038	19.03.07	LehT				IEC 60603-2	
31100	12.06.02	Rie.	Detail.	17.08.98	Hm	1:1 (2:1)	har-bus R Federleiste
27553	02.02.00	Rie.	Insp.	17.08.98	Ko		Einlötl, 64 pol.
26081	07.09.99	Rie.	Stand.				har-bus R female connector
25069	15.10.98	Hm	HARTING Electronics GmbH & Co. KG				TB 09 73 264 x801
24614			D-32339 ESPELKAMP				
Mod.	Dat.	Name					Sub.