

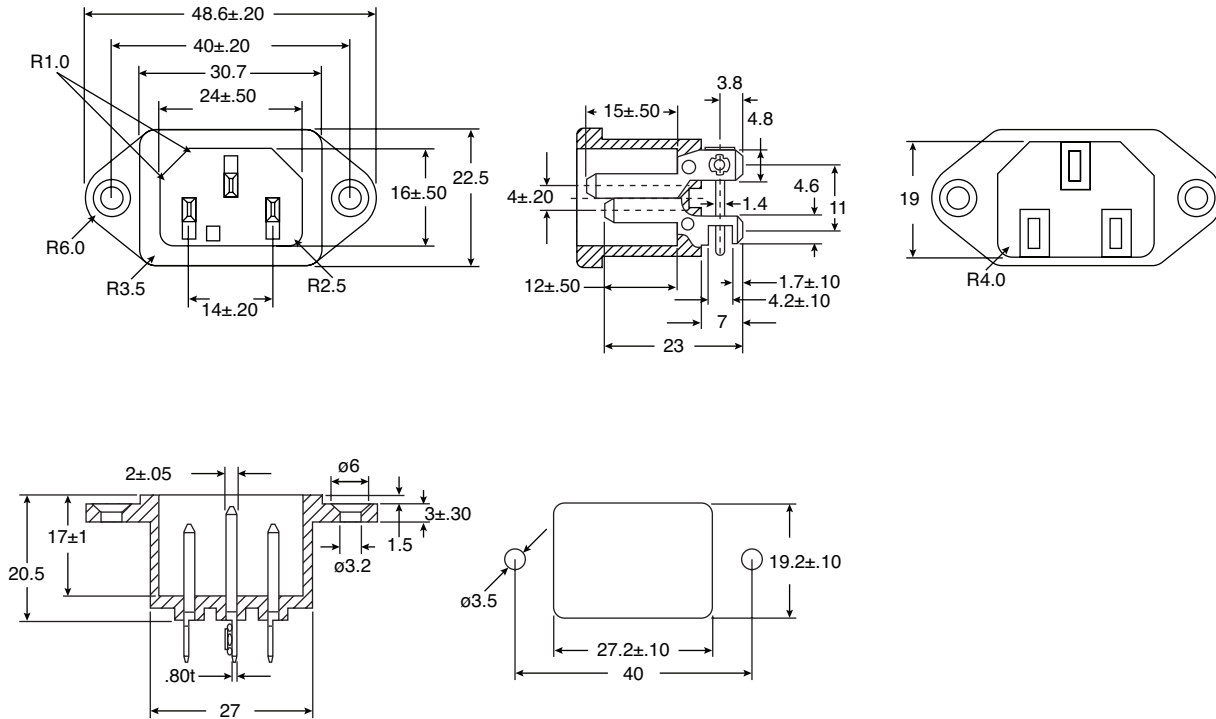
# IEC 60320 C14 Inlet

161-R301B07-E

**KOBI**CONN

IEC 60320 C14 Inlet

161-R301B07-E



Dimensions: mm

SPECIFICATIONS	
<b>Rating:</b>	10A, 250VAC
<b>Insulation Resistance:</b>	Over 100MΩ at 500VDC
<b>Dielectric Strength:</b>	2000VAC for 1 minute
RoHS Compliant	

Materials	
<b>Body:</b>	Black Glass-Fiber Thermoplastic

Tolerance
X.XX±0.1
XX.XX±0.2
XXX.XX±0.3

Date Last Revised: 8-20-07

Available from Mouser Electronics  
1-800-346-6873 / www.mouser.com

KC- 301182

Specifications are subject to change without notice. No liability or warranty implied by this information. Environmental compliance based on producer documentation.