

AMPHENOL P/N:	PCB THICKNESS DIM "T"	DIM "A"	DIM "B"
H11-RDA-10X-3	.062 [1.57]	.053 [1.35]	.053±.004 [1.35±0.10mm]
H11-RDA-10X-3-C	.062 [1.57]	.053 [1.35]	.053±.004 [1.35±0.10mm]
H11-RDA-10X-3-CT	.062 [1.57]	.053 [1.35]	.053±.004 [1.35±0.10mm]
H11-RDA-10X-4	.093 [2.36]	.081 [2.05]	.064±.010 [1.62±0.25mm]
H11-RDA-10X-4-C	.093 [2.36]	.081 [2.05]	.064±.010 [1.62±0.25mm]
H11-RDA-10X-4-CT	.093 [2.36]	.081 [2.05]	.064±.010 [1.62±0.25mm]

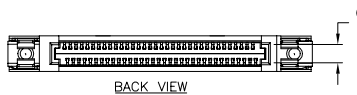
PART NUMBER SYSTEM:

H 1 1 - R D A - 1 0 X - X - X X

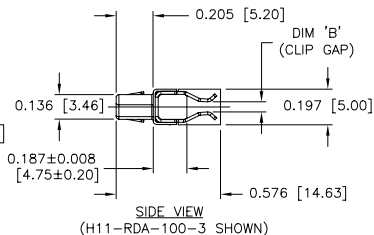
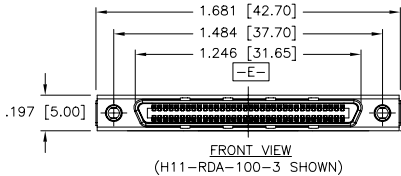
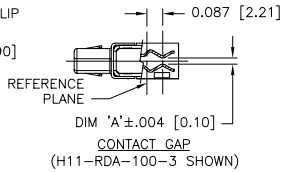
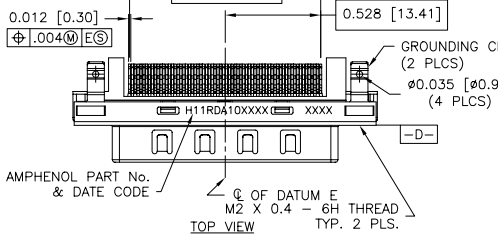
OPTIONS:
 0= WITHOUT SCREWLOCKS
 1= WITH SCREWLOCKS
 OPTIONS:
 3= FOR 0.062" THICK PCB
 4= FOR 0.093" THICK PCB

BLANK= WITHOUT PLUG & WITH TUBE PACKAGING;
 C = WITH PLUG & TUBE PACKAGING;
 CT= WITH PLUG & TAPE & REEL PACKAGING

REVISIONS			
REV.	DESCRIPTION	DATE	APPROVED
A	DWG No. CHANGED FROM H11-RDA-101-X	2003/01/06	AS
B	HOLES ADDED ON THE GROUND CLIPS	2003/02/27	AK
C	DIM .197 [5.00] ADDED ON ZONE B5	2003/03/21	AK
D	.197 CHG TO .187 ON ZONE B5. DIM 'C' ADDED	2003/07/04	AK
E	ADD PLUG, TAPE & REEL OPTION; ADD P/N SYSTEM; DWG No. CHANGED FROM H11-RDA-100-X	NOV20/03	AK
F	CHANGE CLIP GAP DIM. & TOLERANCE.	JAN6/04	AK
G	CHANGE DWG NO. & ADD MOUNTING OPTION		



0.101±0.001 [2.57±0.03]
 (OPENING FOR PCB)



NOTE:
 PLASTIC HOUSING: GLASS FILLED THERMOPLASTIC
 FLAMMABILITY RATING UL 94V-0.
 COLOUR: BLACK

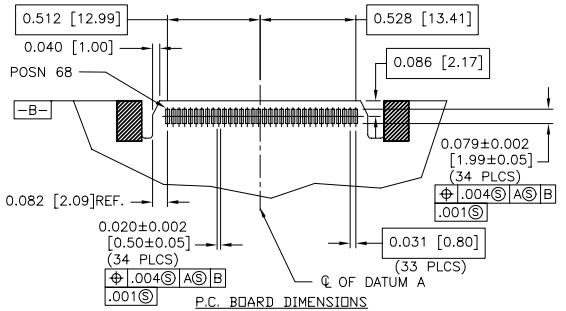
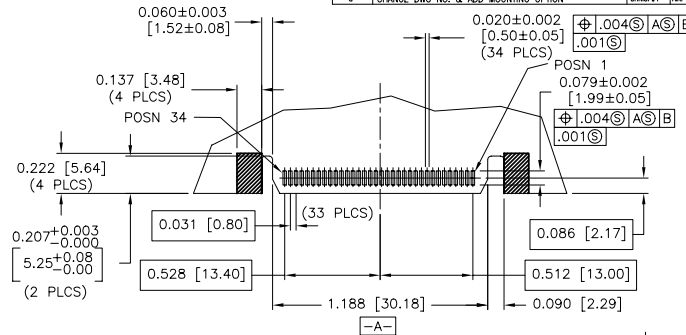
CONTACTS: PHOSPHOR BRONZE
 30 μ" [0.76 MICRONS] GOLD OVER
 50 μ" [1.27 MICRONS] NICKEL.

SHELL: STEEL, NICKEL PLATED.

GROUNDING CLIP: COPPER ALLOY, 150μ" (3.75 MICRONS)
 TIN-LEAD OVER 50μ" (1.27 MICRONS) NICKEL

REFLOW: 6μ" (0.15 MICRONS) MIN. SOLDER PASTE ON
 P.C. BOARD REQUIRED FOR REFLOW PROCESS.

THIS DOCUMENT CONTAINS PROPRIETARY INFORMATION AND SUCH INFORMATION MAY NOT BE DISCLOSED TO OTHERS FOR ANY PURPOSE
 OR USED FOR MANUFACTURING PURPOSES WITHOUT PERMISSION FROM AMPHENOL CANADA CORP.



CONTACTS: PHOSPHOR BRONZE
 30 μ" [0.76 MICRONS] GOLD OVER
 50 μ" [1.27 MICRONS] NICKEL.

SHELL: STEEL, NICKEL PLATED.

GROUNDING CLIP: COPPER ALLOY, 150μ" (3.75 MICRONS)
 TIN-LEAD OVER 50μ" (1.27 MICRONS) NICKEL

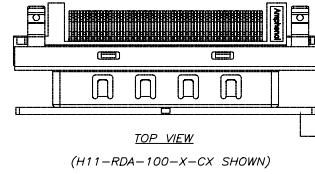
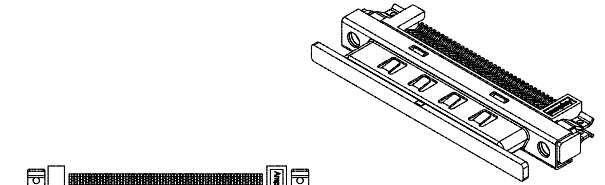
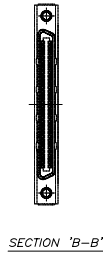
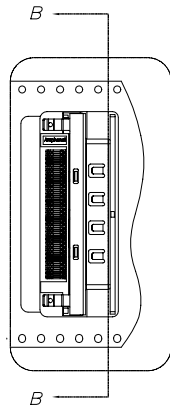
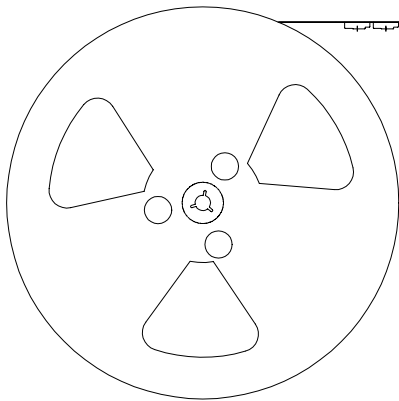
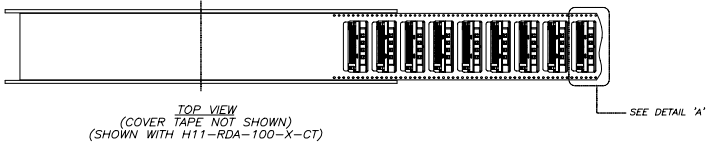
REFLOW: 6μ" (0.15 MICRONS) MIN. SOLDER PASTE ON
 P.C. BOARD REQUIRED FOR REFLOW PROCESS.

THIS DOCUMENT CONTAINS PROPRIETARY INFORMATION AND SUCH INFORMATION MAY NOT BE DISCLOSED TO OTHERS FOR ANY PURPOSE
 OR USED FOR MANUFACTURING PURPOSES WITHOUT PERMISSION FROM AMPHENOL CANADA CORP.

UNLESS OTHERWISE SPECIFIED DIMENSIONS ARE IN INCHES	APPROVALS	DATE	Amphenol Canada Corp.
DESIGNED	J.SI	2003/01/06	TITLE
CHECKED			WHCI STRADDLE MOUNT RECEPTACLE
SEE NOTES			
REV. EAR 11913			REV. G
DWG NO. 03554			SCALE 2 = 1
			PROJECT RDA SHEET 1 OF 2

8 7 6 5 4 3 2 1

REVISIONS			
REV.	DESCRIPTION	DATE	APPROVED
A	DWG No. CHANGED FROM H11-RDA-101-X		
B	HOLES ADDED ON THE GROUND CLIPS	2003/01/06	J.S.I.
C	DIM .197 [5.00] ADDED ON ZONE B5	2003/02/27	AK
D	.197 CHG TO .187 ON ZONE B5. DIM 'C' ADDED	2003/03/21	AK
E	ADD PLUG, TAPE & REEL OPTIONS AND P/N SYSTEM; DWG No. CHANGED FROM H11-RDA-100-X	2003/07/04	AK
F	CHANGE CLIP GAP DIM. & TOLERANCE.	NOV/20/03	AK
G	CHANGE DWG NO. & ADD MOUNTING OPTION	JAN6/04	AK



PLUG COVER TO BE REMOVED AFTER CONNECTOR SOLDERED INTO THE PCB



PACKAGING NOTES:

- REEL DETAILS:
a) O.D.: 330.00 [12.992].
b) THICKNESS: 56.8 [2.236].
c) CONNECTORS PER REEL: 496.
- TAPE & REEL PACKAGING IS IN COMPLIANCE WITH EIA 481.

DO NOT SCALE DRAWING OR USED FOR MANUFACTURING PURPOSES WITHOUT PERMISSION FROM AMPHENOL CANADA CORP.

UNLESS OTHERWISE SPECIFIED DIMENSIONS ARE IN INCHES		APPROVALS	DATE	Amphenol Canada Corp.	
DESIGNED	J.S.I.	2003/01/06	TITLE	VHDCI STRADDLE MOUNT RECEPTACLE	
INITIAL AND FRESH			DATE		
SEE NOTES			BY APP		
REV.	EAR 11913		DATE	SCALE	N.T.S.
DWG NO.	03554		REV. NO.	P-H11-RDA-10X-X-XX	REV. G
			PROJECT	RDA	SHEET 2 OF 2

8 7 6 5 4 3 2 1