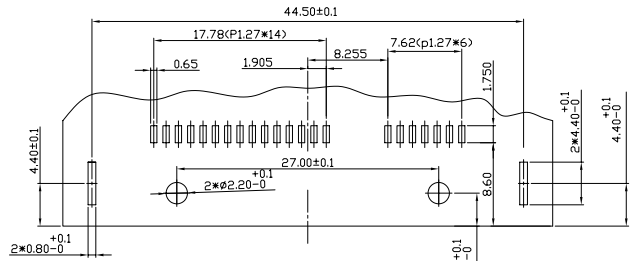
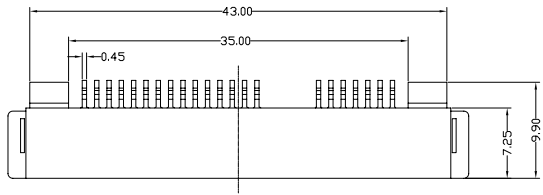


This document is the property of Amphenol Corporation and is delivered on the express condition that it is not to be disclosed, reproduced or used, in whole or in part, for manufacturers or sale by anyone other than Amphenol Corporation without its prior consent. A full no right is granted to disclose or to use any information in this document.

Customer Drawing

REVISIONS				
SYM	ECN	DESCRIPTION	DATE	APPROVED
B	HK3854	RELEASE TO PRODUCTION	5/18/06	Michael.IP
C	HK4281	CHANGE THE TOLERANCE TO MEET SATA SPEC	1/29/07	Michael.IP



RECOMMENDED PCB LAYOUT
(PC BOARD THICKNESS: 1.60mm±0.10)

NOTE:

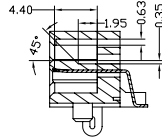
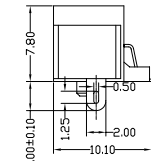
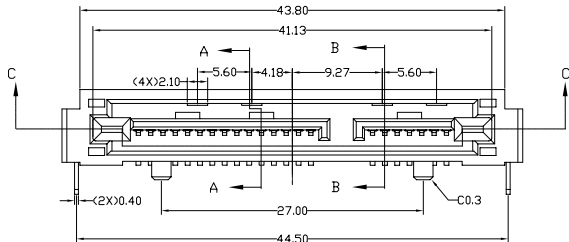
- MATERIAL:
HOUSING: HIGH TEMPERATURE THERMOPLASTIC MATERIAL . UL 94 V-0, BLACK;
CONTACTS: COPPER ALLOY T=0.25mm;
CONTACT FINISHED: 1.30-2.54um, NICKEL UNDER PLATED ON ENTIRE CONTACT;
SEE NOTES 4 FOR GOLD PLATING ON MATING AREA;
2.54-5.08um MATTE TIN PLATED ON TAIL AREA;
SOLDER TAB: BRASS, T=0.4±0.05mm;
SOLDER TAB FINISHED: 2.54-5.08um PURE MATTE TIN OVER 1.30um MIN. NICKEL;

- SPECIFICATIONS:
RATED CURRENT: SIGNAL PIN 1.5A MIN
POWER PIN 1.5A MIN
DIELECTRIC STRENGTH: 500V FOR 1 MINUTE
INSULATION RESISTANCE: 1x10⁹ MΩ
TEMPERATURE: -40°C TO +105°C
CONTACT RESISTANCE: 30mΩ MAX

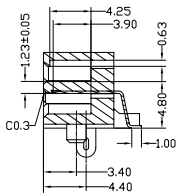
- PACKAGE: PACKING WITH TRAY.
- ORDERING INFORMATION:

SATA - 001 - 0225 - X

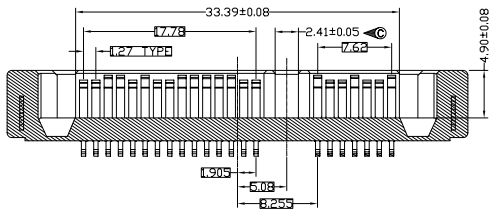
- GOLD PLATING ON MATING AREA:
1: 0.76 um MIN.
2: 0.38 um MIN.
3: GOLD FLASH



SECTION A-A



SECTION B-B



SECTION C-C

UNLESS OTHERWISE SPECIFIED TOLERANCES	U.S.	METRIC	APPROVAL	DATE	Amphenol
	.X +/-	0.45	DRAWN: Moyo.Lu	1/29/07	
.XX +/-	0.25	CHECKED: Michael.IP	1/29/07		TITLE
.XXX +/-	0.15	CHECKED			15+7PIN SATA PLUG,SMT TYPE
ANGLES +/-	°				SIZE
FOR MATERIALS AND FINISHES SEE NOTES			DRAWING FILE :		DRAWING NO.
REMOVE SHARP EDGES			\\DRAWING\SATA\C\SATA0010225X-C.DWG		A3C SATA-001-0225-X
DIMENSIONS			ANGLE OF PROJECTION		REV.
U.S.	INCHES-				C
(METRIC)	(MM)				SCALE
					NONE
					SHEET 1 OF 1

4

3

2

1