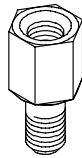


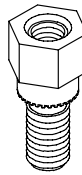
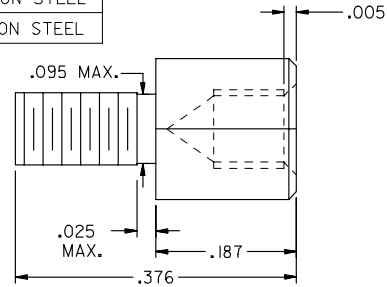
71781

ITEM #	INTERNAL THREAD	EXTERNAL THREAD	FINISH	MATERIAL
71781-0001	#4-40 UNC-2B	#4-40 UNC-2A	NICKEL	LOW CARBON STEEL
71781-0002	#4-40 UNC-2B	#4-40 UNC-2A	CLEAR TRIVALENT CHROMATE	LOW CARBON STEEL

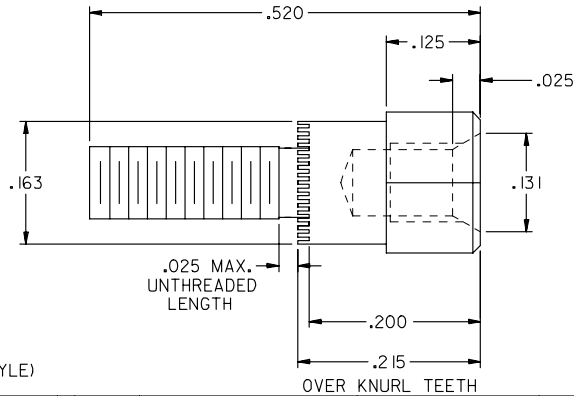
**NOTE:**  
PARTS TO BE BULK PACKAGED  
IN BAGS OF 1,000.



71781-0001



71781-0002  
(SELF CLINCHING STYLE)



MODIFY FINISH EC NO: LCP2007-1271 DRAWN BY: BARBARA CHECKED BY: MORGAN APPROVED BY: MILLER 2007/01/18 2007/01/29 2007/01/30	QUALITY SYMBOLS	GENERAL TOLERANCES (UNLESS SPECIFIED)	DIMENSION STYLE INCH ONLY		SCALE 8:1	DESIGN UNITS INCH	THIRD ANGLE PROJECTION																												
	$\nabla=0$ $\sphericalangle=0$	<table border="1"> <thead> <tr> <th></th> <th>mm</th> <th>INCH</th> </tr> </thead> <tbody> <tr> <td>4 PLACES</td> <td>± .---</td> <td>± .---</td> </tr> <tr> <td>3 PLACES</td> <td>± .---</td> <td>± .005</td> </tr> <tr> <td>2 PLACES</td> <td>± .---</td> <td>± .---</td> </tr> <tr> <td>1 PLACE</td> <td>± .---</td> <td>± .---</td> </tr> </tbody> </table>		mm	INCH	4 PLACES	± .---	± .---	3 PLACES	± .---	± .005	2 PLACES	± .---	± .---	1 PLACE	± .---	± .---	<table border="1"> <thead> <tr> <th>DRAWN BY</th> <th>DATE</th> </tr> </thead> <tbody> <tr> <td>MOS</td> <td>95/10/23</td> </tr> <tr> <th>CHECKED BY</th> <th>DATE</th> </tr> <tr> <td>PAM</td> <td>95/10/23</td> </tr> <tr> <th>APPROVED BY</th> <th>DATE</th> </tr> <tr> <td>JWN</td> <td>95/10/23</td> </tr> </tbody> </table>	DRAWN BY	DATE	MOS	95/10/23	CHECKED BY	DATE	PAM	95/10/23	APPROVED BY	DATE	JWN	95/10/23	TITLE 3/16 HEXAGONAL JACKPOST INT/EXT #4-40 THREAD FOR USE WITH EVC		MOLEX INCORPORATED		STEEY NO. 1 OF 1
		mm	INCH																																
	4 PLACES	± .---	± .---																																
3 PLACES	± .---	± .005																																	
2 PLACES	± .---	± .---																																	
1 PLACE	± .---	± .---																																	
DRAWN BY	DATE																																		
MOS	95/10/23																																		
CHECKED BY	DATE																																		
PAM	95/10/23																																		
APPROVED BY	DATE																																		
JWN	95/10/23																																		
DRAFT WHERE APPLICABLE MUST REMAIN WITHIN DIMENSIONS	MATERIAL NO. SEE TABLE	DOCUMENT NO. SD-71781-****	THIS DRAWING CONTAINS INFORMATION THAT IS PROPRIETARY TO MOLEX INCORPORATED AND SHOULD NOT BE USED WITHOUT WRITTEN PERMISSION																																